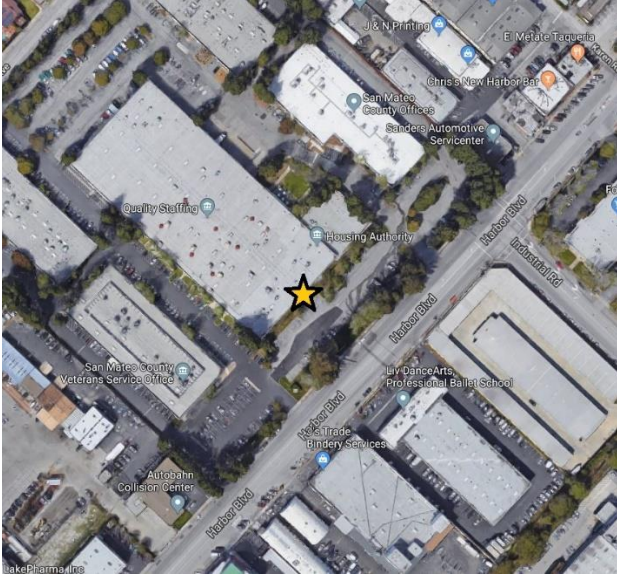


COUNTY CAMPUSES

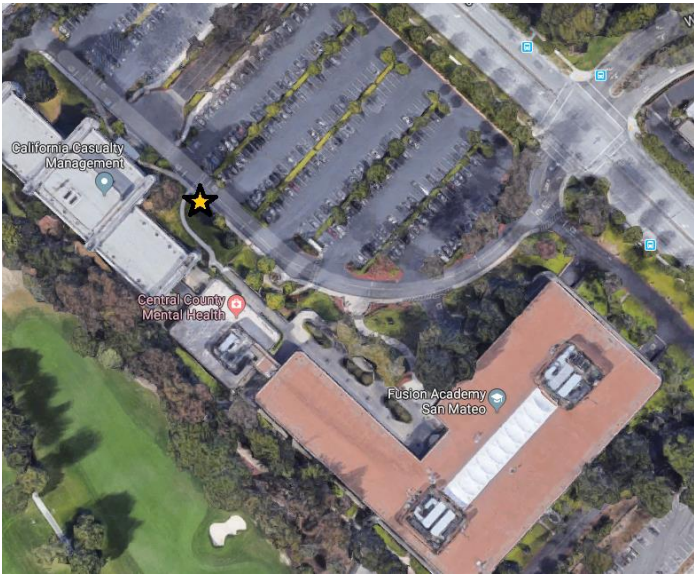
Harbor Park Campus, 310 Harbor Blvd, Building E, Belmont

The entrance to Building E facing Harbor Blvd, next to the ADA parking spaces. This spot is ADA accessible.



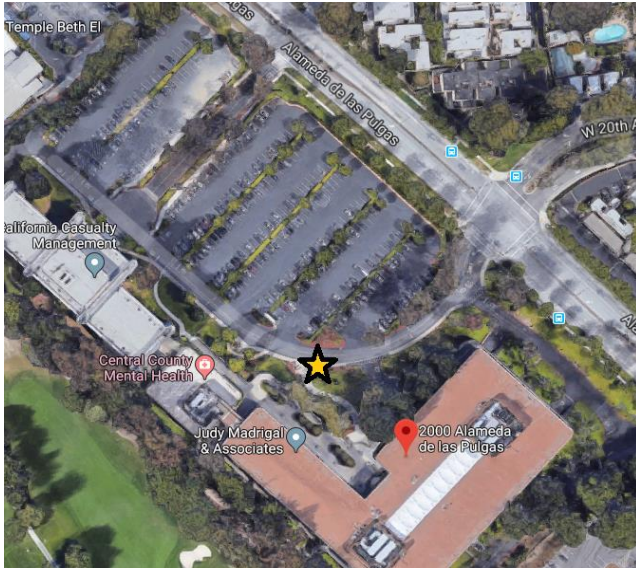
1900 Alameda de las Pulgas, San Mateo

The crosswalk, at the beginning of the ADA ramp. This spot is ADA accessible.



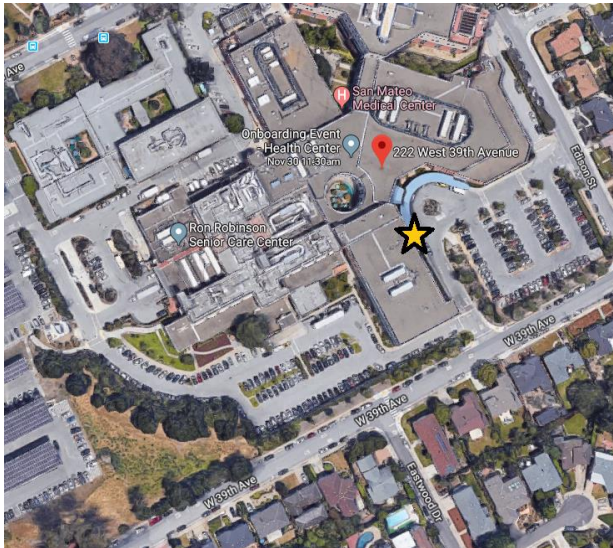
2000 Alameda de las Pulgas, San Mateo

By the curbside mailboxes, at the beginning of the sidewalk leading to the main entrance.



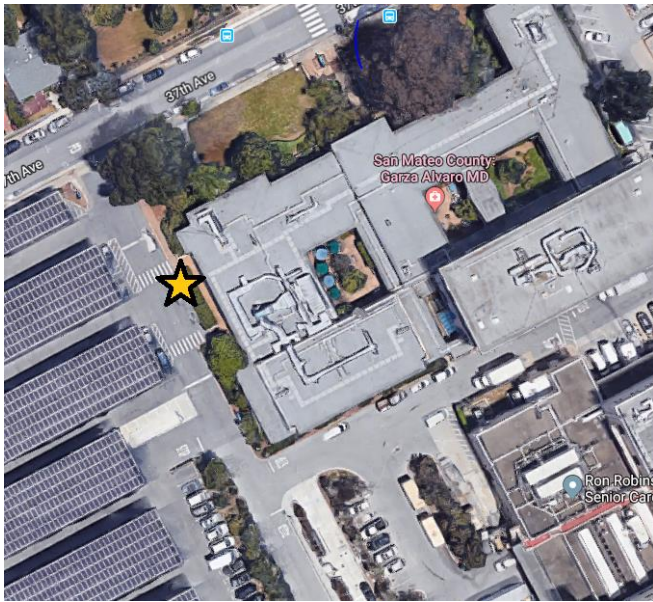
San Mateo Medical Center, 222 West 39th Ave, San Mateo

Roundabout in front of the patient entrance to the Hospital. This spot is ADA accessible.



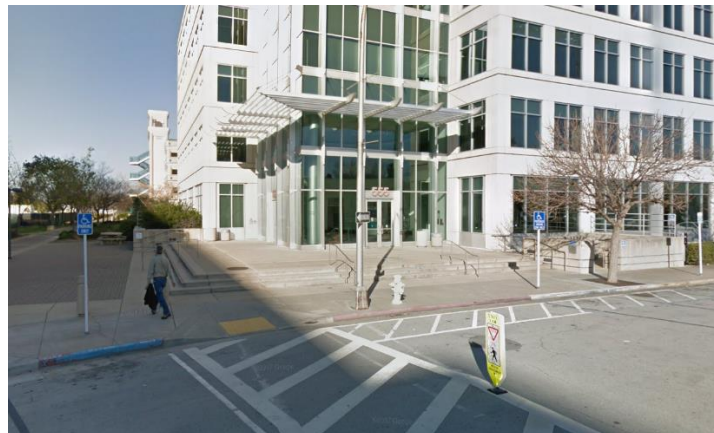
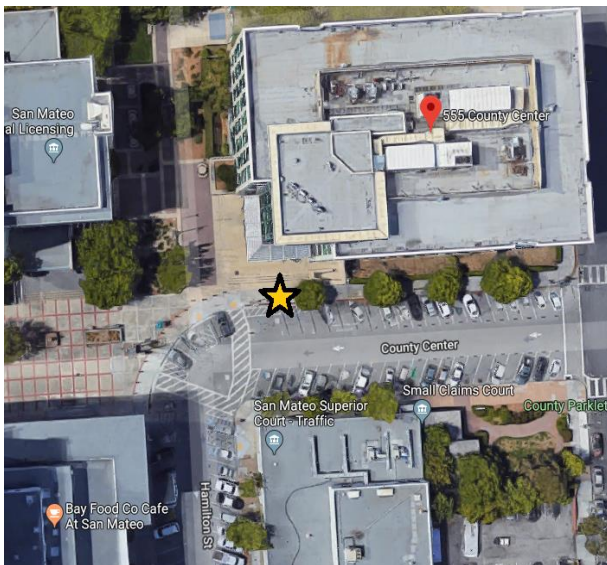
Health System, 225 37th Ave, San Mateo

At the Aging & Adult Services entrance, leading to the West Parking Lot. This spot is ADA accessible.



County Center, 555 County Center, Redwood City

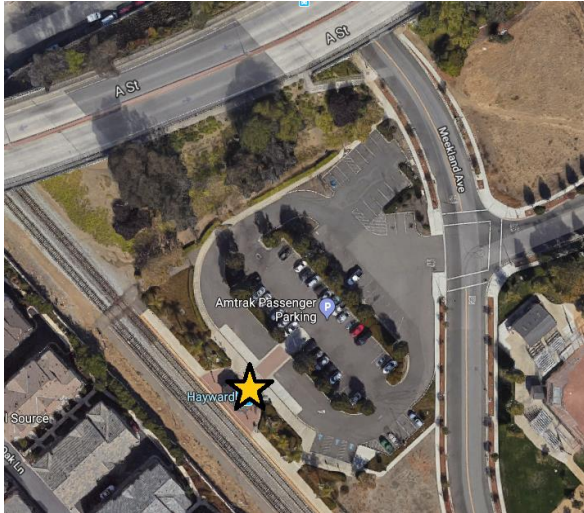
Loading zone in front of Building 555.



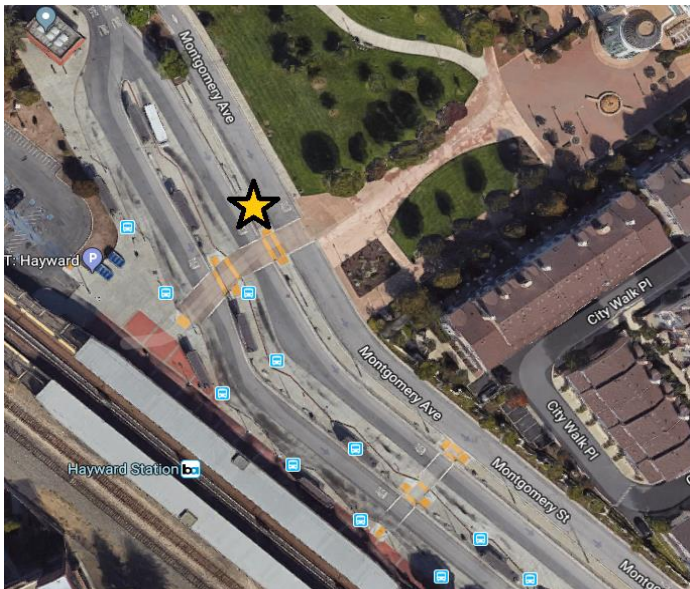
ROUTE STOPS

EAST BAY

Hayward Amtrak, 22555 Meekland Ave, Hayward
In front of the station shelter.



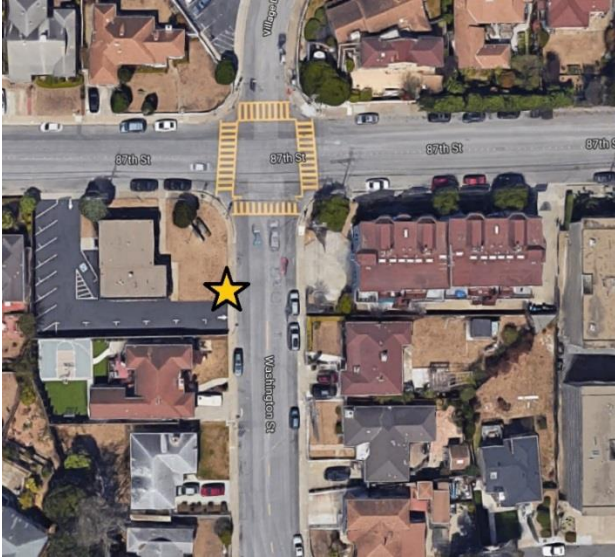
Hayward BART, 699 B Street, Hayward
In the pickup zone along Montgomery Ave, near the major crosswalk.



NORTH COUNTY

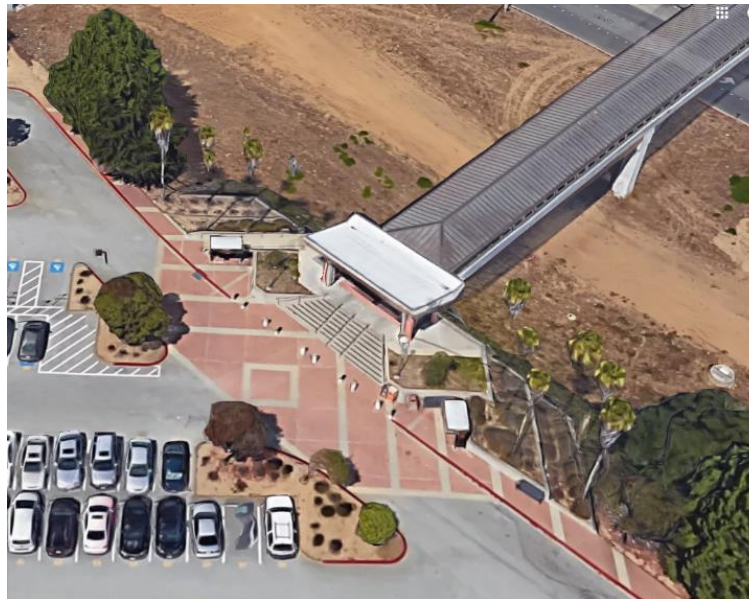
87th and Washington, 501 87th Street, Daly City

In front of the Broadmoor Village long driveway.



Colma BART, 365 D Street, Daly City

At the SamTrans Park & Ride lot, across the pedestrian bridge from the BART station



North County Courts, 1050 Mission Road, South San Francisco

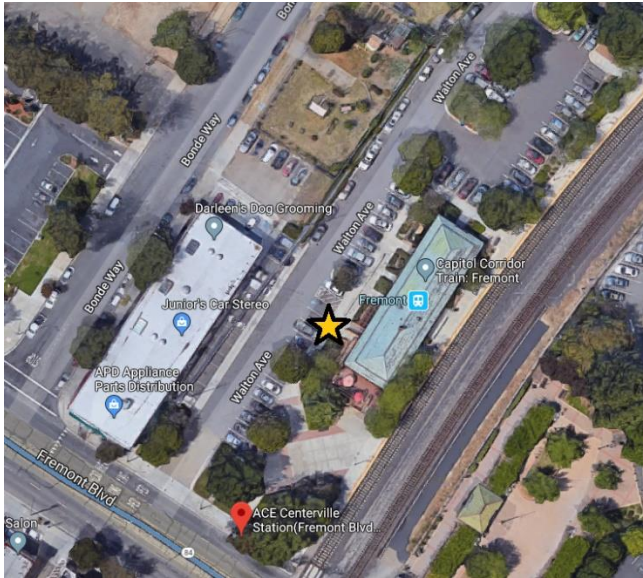
On the south side of the Courts building, near the public entrance. *Please park in the public parking spaces on the south side of the building.*



SOUTH BAY

Fremont ACE, 37260 Fremont Blvd, Fremont

The driveway in front of the ACE station, near the ADA-designated parking spaces.



Ardenwood Park & Ride, 34805 Ardenwood Blvd, Fremont

The bus lane and bus shelter near the ADA-designated parking spaces.

