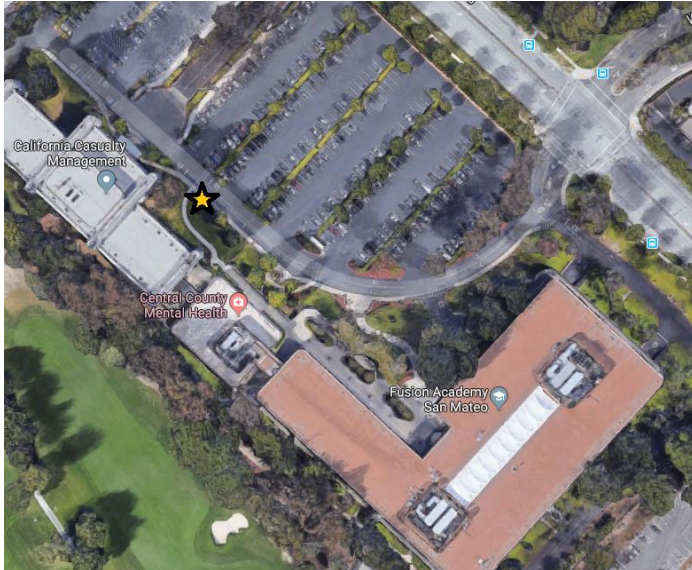


## COUNTY CAMPUSES

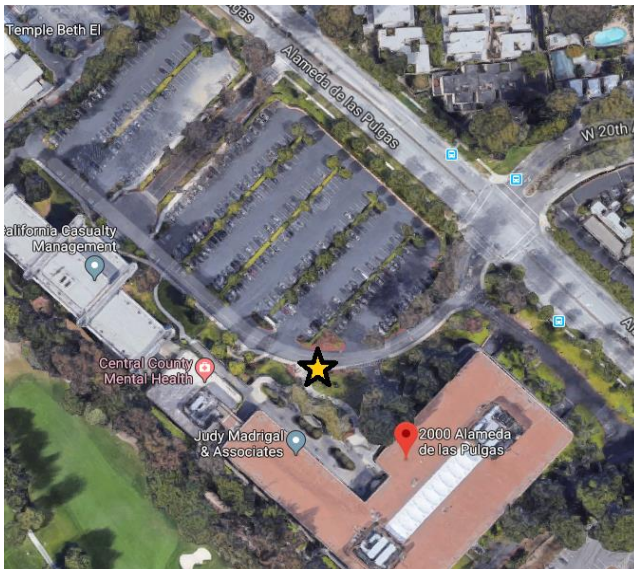
1900 Alameda de las Pulgas, San Mateo

The crosswalk, at the beginning of the ADA ramp. This spot is ADA accessible.



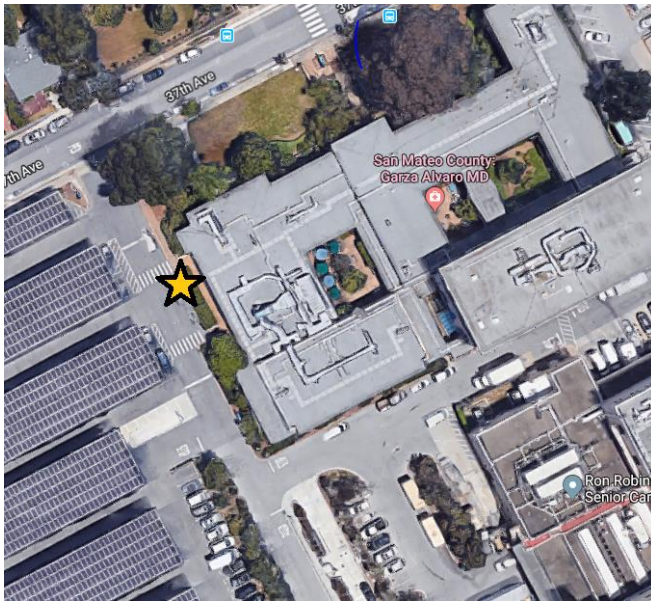
2000 Alameda de las Pulgas, San Mateo

By the curbside mailboxes, at the beginning of the sidewalk leading to the main entrance.



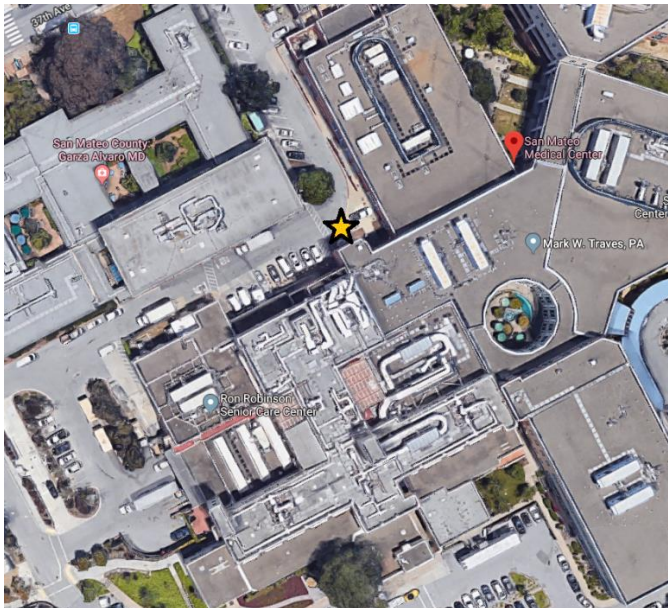
## Health System, 225 37<sup>th</sup> Ave, San Mateo

At the Aging & Adult Services entrance, leading to the West Parking Lot. This spot is ADA accessible.



## San Mateo Medical Center, 222 West 39<sup>th</sup> Ave, San Mateo

The back entrance to the Medical Center, in between the Health System and Hospital buildings. This spot is ADA accessible.



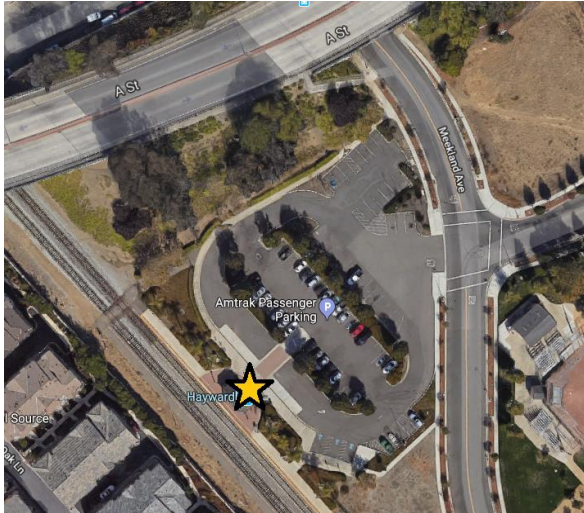


# ROUTE STOPS

## EAST BAY

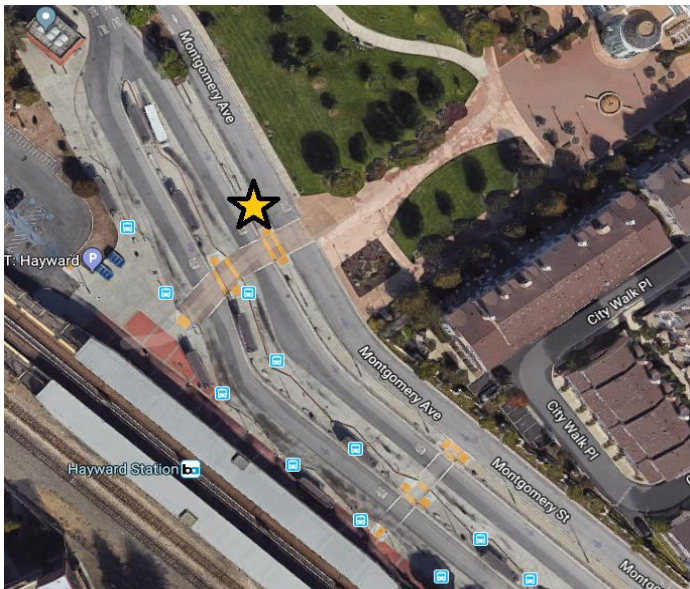
Hayward Amtrak, 22555 Meekland Ave, Hayward

In front of the station shelter.



Hayward BART, 699 B Street, Hayward

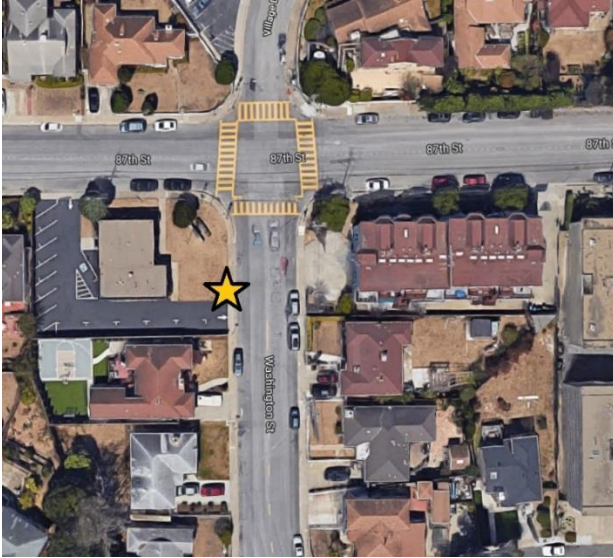
In the pickup zone along Montgomery Ave, near the major crosswalk.



## NORTH COUNTY

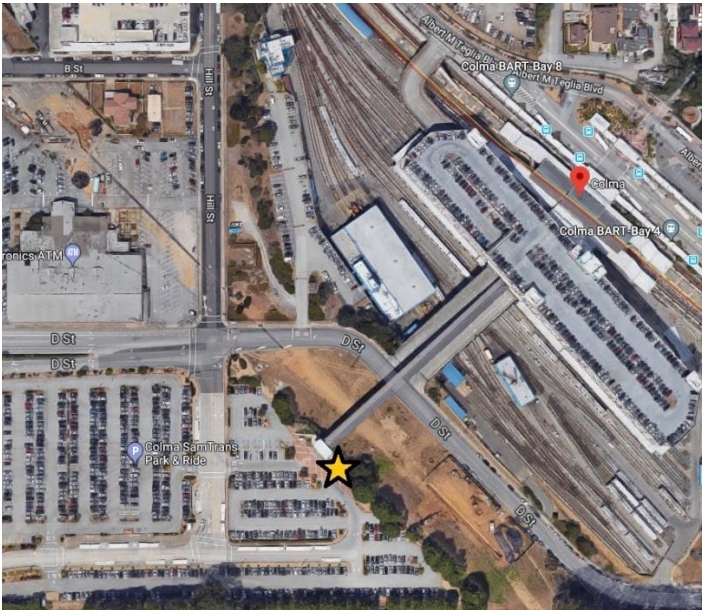
87<sup>th</sup> and Washington, 501 87<sup>th</sup> Street, Daly City

In front of the Broadmoor Village long driveway.



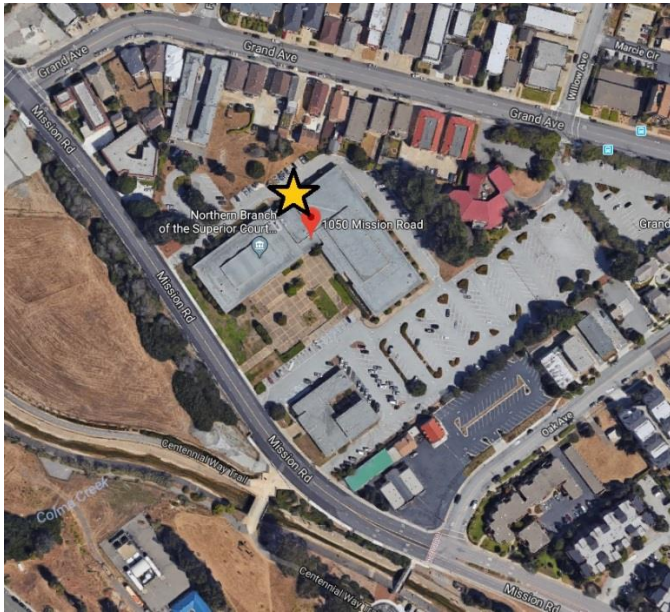
Colma BART, 365 D Street, Daly City

At the SamTrans Park & Ride lot, across the pedestrian bridge from the BART station



# North County Courts, 1050 Mission Road, South San Francisco

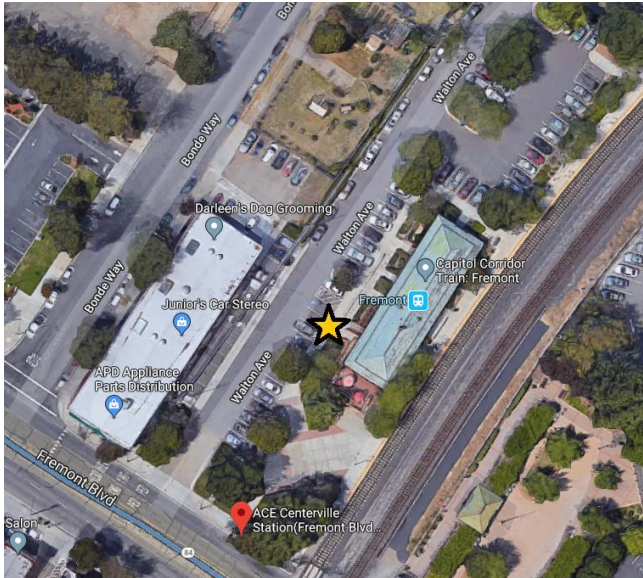
On the north side of the Courts building, near the employee entrance. *Please park in the public parking spaces on the south side of the building.*



## SOUTH BAY

Fremont ACE, 37260 Fremont Blvd, Fremont

The driveway in front of the ACE station, near the ADA-designated parking spaces.



Ardenwood Park & Ride, 34805 Ardenwood Blvd, Fremont

The bus lane and bus shelter near the ADA-designated parking spaces.

