



**1998 Palo Alto**

**2017 East Palo Alto**





# The Almanac

THE HOMETOWN NEWSPAPER FOR MENLO PARK, AThERTON, PORTOLA VALLEY AND WOODSIDE

MARCH 5, 2014 | VOL. 49 NO. 26



WWW.THEALMANACONLINE.COM

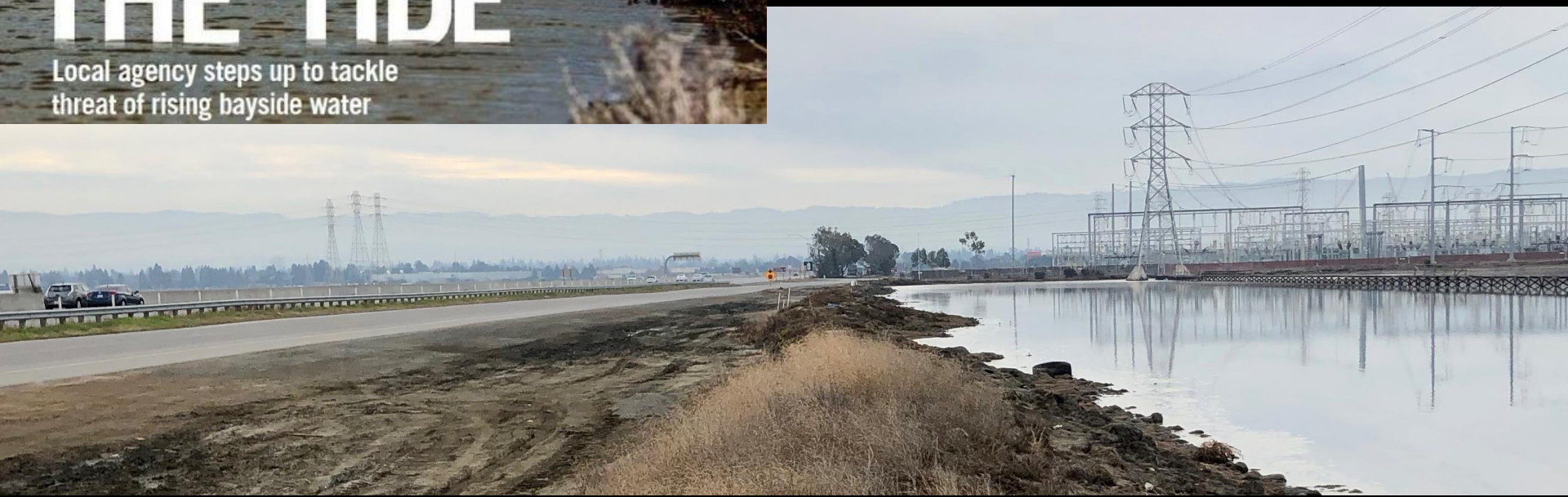
## STEMMING THE TIDE

Local agency steps up to tackle  
threat of rising bayside water

## Risk to shoreline infrastructure in south San Mateo County

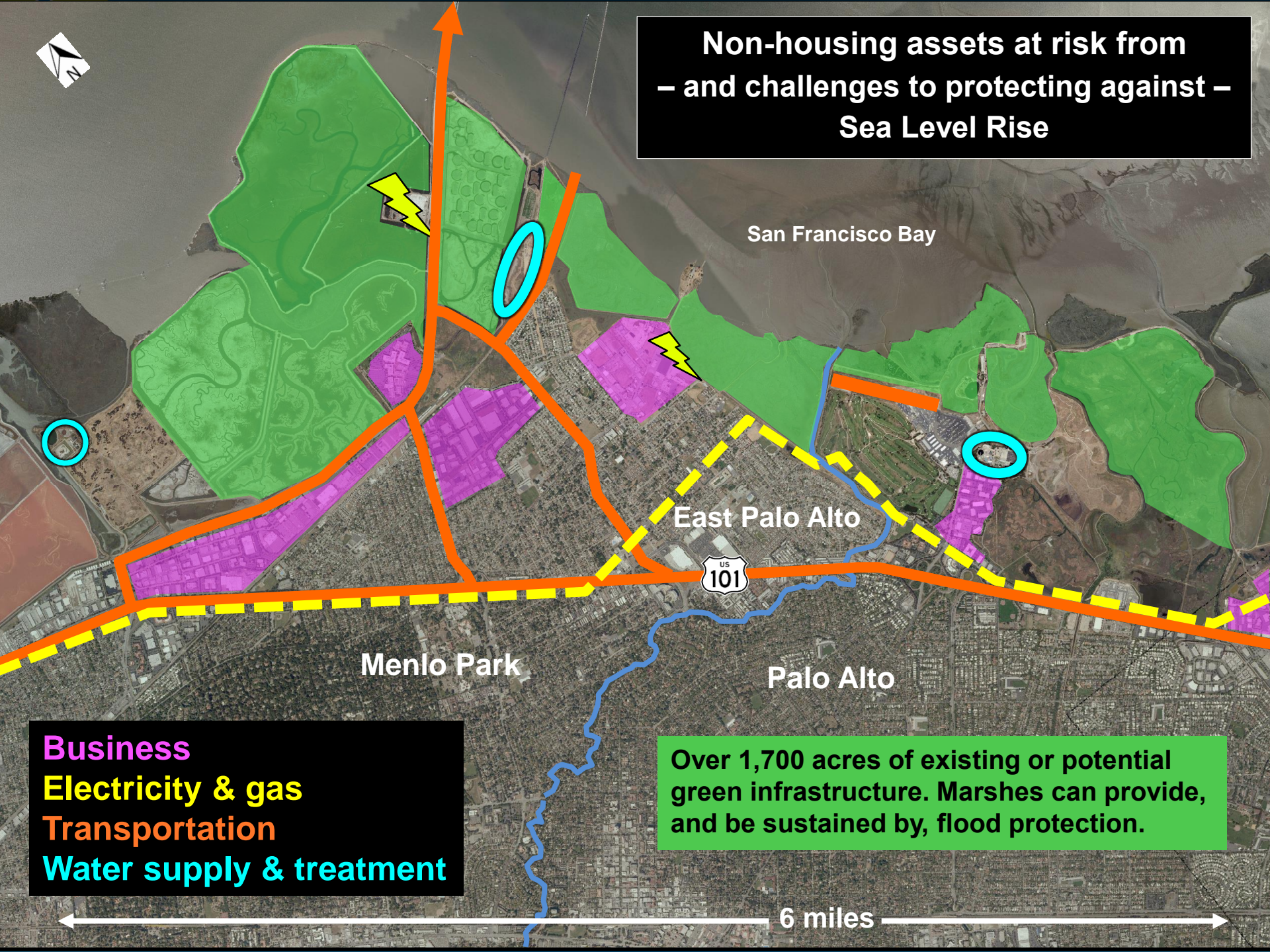


*2017 Menlo Park*





# Non-housing assets at risk from – and challenges to protecting against – Sea Level Rise



**Business**  
**Electricity & gas**  
**Transportation**  
**Water supply & treatment**

Over 1,700 acres of existing or potential green infrastructure. Marshes can provide, and be sustained by, flood protection.

6 miles

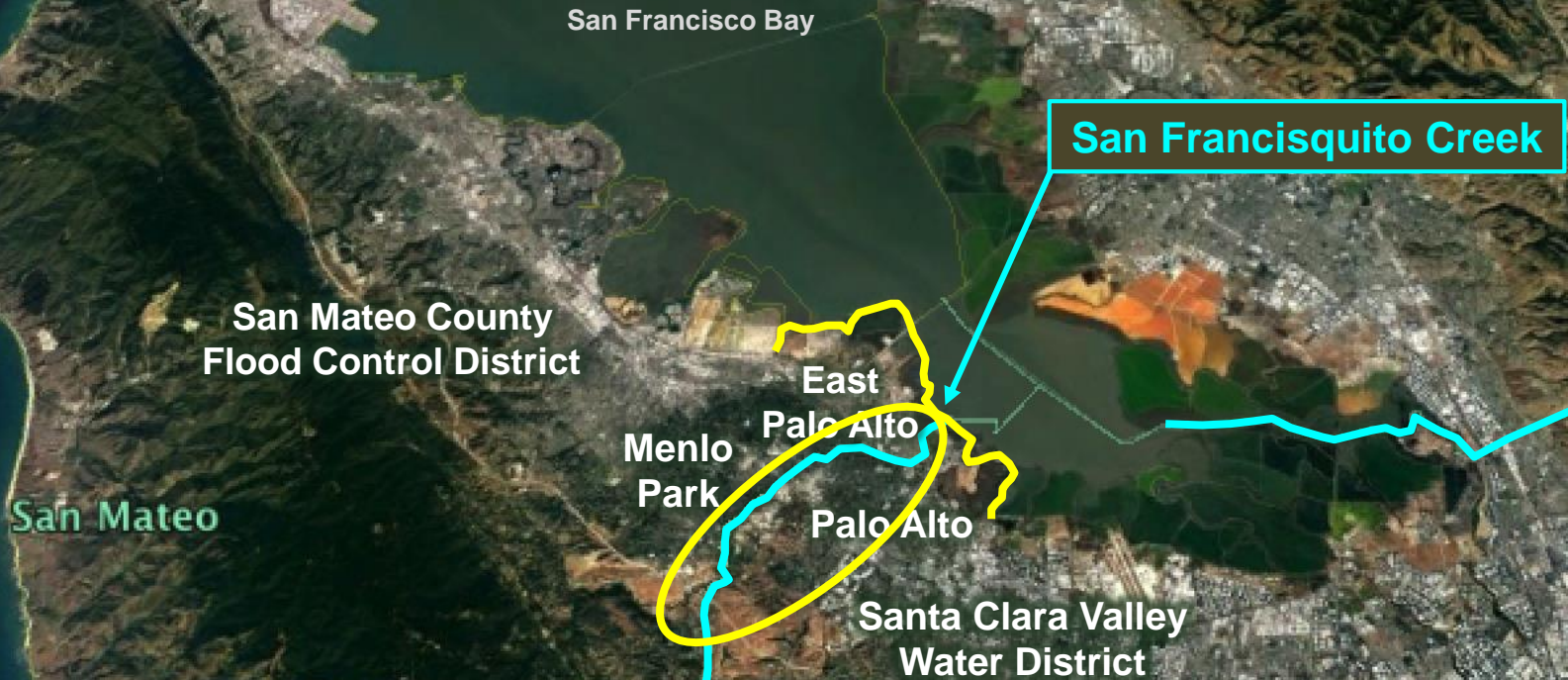




**SFCJPA.ORG**

A government agency creating and implementing a common vision among multiple jurisdictions, where public and private entities share the many costs and benefits of a regional approach.

Water is a shared resource, and its quality, supply and flood safety are connected.



# **SFCJPA Governance and Funding**

**A five member Board of Directors composed of one member (and one alternate) who are elected officials appointed by the governing body of each of the five founding agencies.**

**Annual operating budget is approximately \$1 million.  
90-95% from founding agencies, 5-10% from grant overhead.**

**Capital projects funding: since 2010, \$95 million committed to planning, design, construction, and maintenance.**

- **52% from 5 founding agencies (mostly countywide Water District in Santa Clara Co.)**
- **35% from State – Caltrans, Dept. of Water Resources, Coastal Conservancy**
- **11% from PG&E, local sewer district, Facebook**
- **2% from federal government**







SFCJPA.ORG

# The Big Picture: San Francisquito Creek area Floodplains and Projects

San Francisco Bay

East Palo Alto

Menlo Park




Palo Alto

**SF Bay-Hwy 101: constructing  
bridge, levees, and floodwalls**

**Upstream of Hwy. 101: EIR of  
bridge, bank, basin, floodwall**

**Shoreline: planning & design**

Approximate number of parcels in the 100-year floodplains

-  Creek floodplain only (3,500 parcels)
-  Bay floodplain only, 3' Sea Level Rise (over 2,700 parcels)
-  Overlap of creek and Bay floodplains (2,200 parcels)

6 miles



# San Francisquito Creek S.F. Bay-Highway 101 Project under construction through 2018

- Protect against any creek flow in this tidal area with a sea level up to 9 feet above today's high tide
- Create/restore 22 acres of marsh habitat and construct horizontal levee
- Enhance access to recreational/commuter trails
- Upgrade major gas, electric and sewer lines
- Provide recycled water to East Palo Alto from Palo Alto





***S.F. Bay–Hwy. 101 Project:  
before and after construction***







**Thank you**



**Len Materman**  
**Executive Director**  
**San Francisquito Creek Joint Powers Authority**  
**650-324-1972**  
**len@sfcjpa.org**