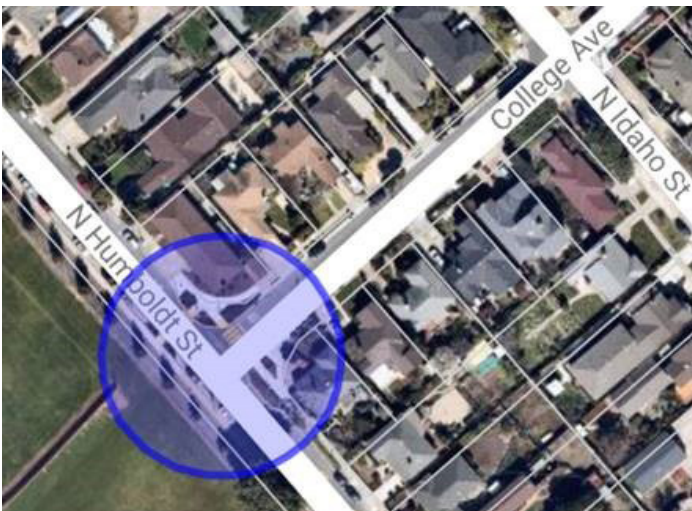
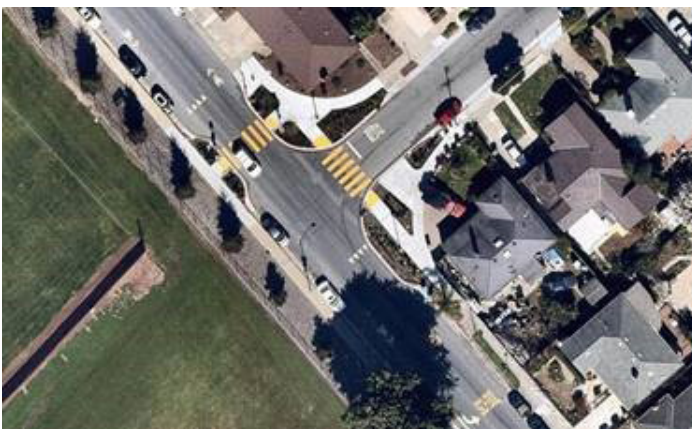


# GREEN INFRASTRUCTURE – POPLAR AVENUE

As part of the larger Poplar Avenue/North Amphlett Boulevard interchange project, the City of San Mateo took the opportunity to install green bulb-outs on Humboldt Street. This also included enhanced crosswalks and visibility markings on the street.

## Area Map

Project map shows interchange improvements and the Humboldt corridor where green infrastructure was installed.



## Timeline

Design work was completed in March of 2016. The construction contract was awarded in June of that year, with work beginning in late July. The project was completed by June 2017.

## Partners

The Transportation Authority (TA) provided Measure A funds which paid for much of the project construction.

## Funding

For the \$1.6 million project, significant funding (\$1.1 million) came from Measure A funds via TA. In addition to construction costs, this includes \$250,000 for design and engineering and over \$50,000 in environmental review and permit fees.

## Results

While the primary focus of the project was the interchange at Poplar Avenue and North Amphlett Boulevard, the pedestrian improvements have increased permeability and aesthetic appeal while the bulb-outs and crosswalk improvements are protecting pedestrians as they walk along and cross Humboldt Street.



PHOTO SHOWING INTERSECTION WITH BIOSWALE BULB-OUTS