

IT TAKES A WATERSHED

The Pescadero Watershed has complex impairments with wide ranging impacts requiring coordinated, integrated, comprehensive solutions at a landscape scale involving multiple partners across public and private lands that leverage local, state, federal, and private resources. The result is restoration of a watershed.

Area Map

The Pescadero and Butano Creeks flow westerly and drain approximately 81 square miles of the Santa Cruz Mountains in western San Mateo and Santa Cruz Counties and enter the Pacific Ocean near the town of Pescadero.



Timeline

Out of six watershed projects the Fish Passage, Preventing Fish Kills and Water Conservation projects have been completed. The other ongoing projects include floodplain restoration, channel reconnection, and managing erosion.

Partners

San Mateo Resource Conservation District, San Mateo County Parks, U.S. Department of Agriculture Natural Resources Conservation Service (NRCS), California State Parks, National Oceanic and Atmospheric Administration (NOAA), California Water Boards, Peninsula Open Space Trust (POST), Coastal Conservancy, California Department of Fish and Wildlife, Trout Unlimited, private landowners, and citizens.

Funding

The projects total over \$10 million.

Results

The overall output is a high level of collaboration for landscape level restoration of a watershed addressing multiple complex impairments.

Website

<http://www.sanmateorcd.org>



CHANNEL RECONNECTION



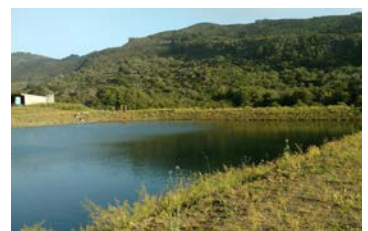
MANAGING EROSION



FISH PASSAGE



PREVENTING FISH KILLS



WATER CONSERVATION, STORAGE