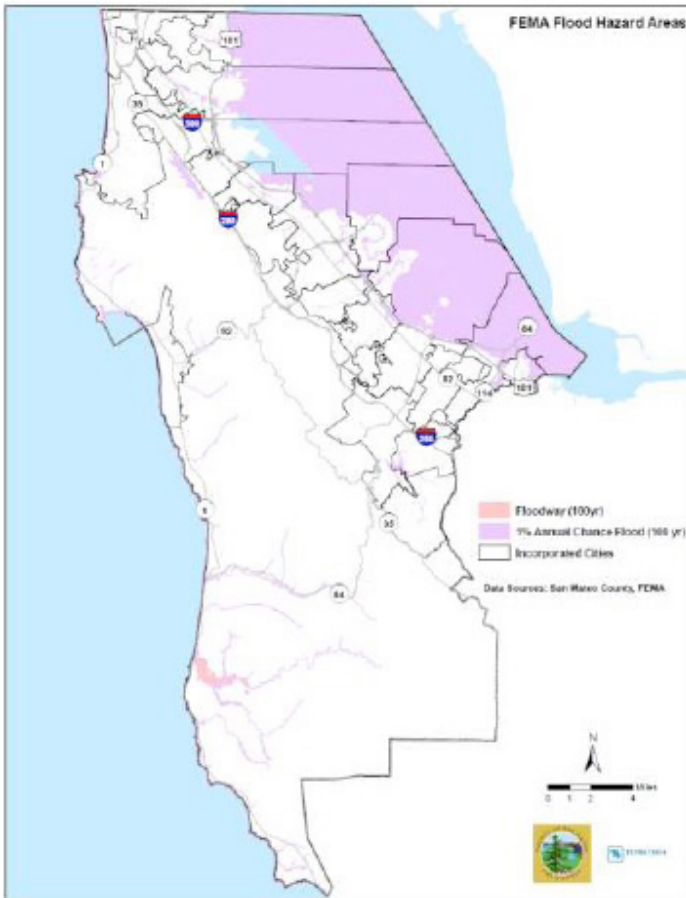


LOCAL HAZARD MITIGATION PLANNING

The San Mateo County Office of Emergency Services coordinates countywide preparedness, response and protection services and activities for large-scale incidents and disasters.

The San Mateo County Local Hazard Mitigation Plan is a set of long-term and short-term policies, programs, projects, and other activities to alleviate the death, injury, and property damage that can result from a disaster.

Area Map



FEMA DIGITAL FLOOD INSURANCE RATE MAP (DFIRM) FLOOD HAZARD AREAS, SAN MATEO COUNTY

Timeline

The San Mateo County Local Hazard Mitigation Plan was adopted in 2016. The plan is required to be updated every 5 years. The County and other participating agencies have an annual maintenance plan to update the Plan in between the 5 year cycles.

The San Mateo County Office of Emergency Services maintains ongoing preparedness in response to any natural or man-made disaster, including flooding.

Partners

The San Mateo County Office of Emergency Services works with the County, all cities, specials districts, non-profits, businesses, and all residents to help prepare for and respond to disasters.

The San Mateo County Local Hazard Mitigation Plan was created in coordination with 18 of the County incorporated municipalities and multiple special districts.

Funding

The San Mateo County Local Hazard Plan was funded using \$70,000 in grant funds.

Results

The disaster mitigation, response, and recovery plans look to reduce the loss of life and property due to disasters.

Website

San Mateo County Office of Emergency Services:
<http://hsd.smcsheriff.com/sheriffs-office-oes>

San Mateo County Local Hazard Mitigation Plan:
<https://planning.smcgov.org/local-hazard-mitigation-plan>