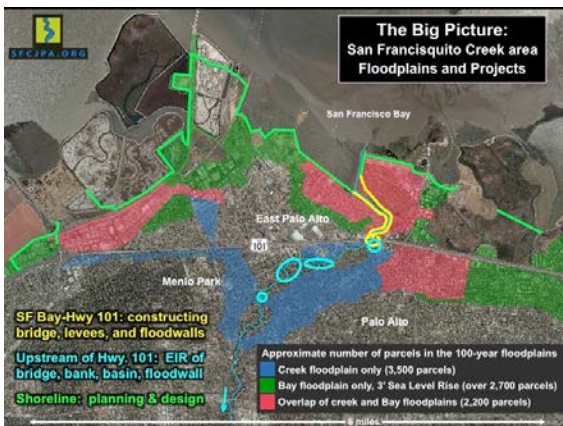
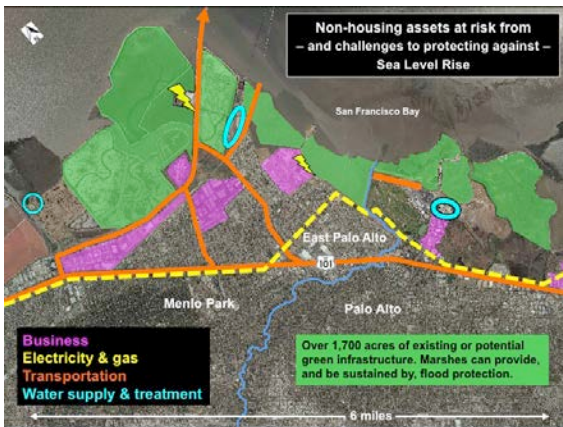


# SAN FRANCISQUITO CREEK JOINT POWERS AUTHORITY (SFCJPA) FLOOD PROTECTION, ECOSYSTEM RESTORATION, AND RECREATION PROJECT

Provides flood protection, ecosystem restoration and recreation to the communities divided by San Francisquito Creek and unified by its watershed and floodplain.

## Area Map



## Timeline

San Francisco Bay-Highway 101: Construction of almost 2 miles of creek, marsh, and highway through 2018. Upstream of Highway 101: Environmental Impact Report (EIR) in 2018; construction from 2020-2022. San Francisco Bay Shoreline: Design and EIR through 2022; construction from 2023-2026.

## Partners

SFCJPA, Santa Clara Valley Water District, San Mateo County Flood Control District, Cities of East Palo Alto, Palo Alto, and Menlo Park. Additional contributions by Caltrans, PG&E, East Palo Alto Sanitary District, California Department of Water Resources, and Facebook.

## Funding

Bay-Hwy 101: Planning/Design \$2.5 million, Construction \$63 million, Permitting and Restoration \$1.5 million.

## Results

Upstream of Hwy 101: Near-term protection against record flow (70-year event); long-term flow protection (100-year). Shoreline Strategy to Advance Flood protection, Ecosystems and Recreation (SAFER) Bay Project: Same sea level rise protection as San Francisco Bay-Highway 101.

## Website

<http://sfcjpa.org>