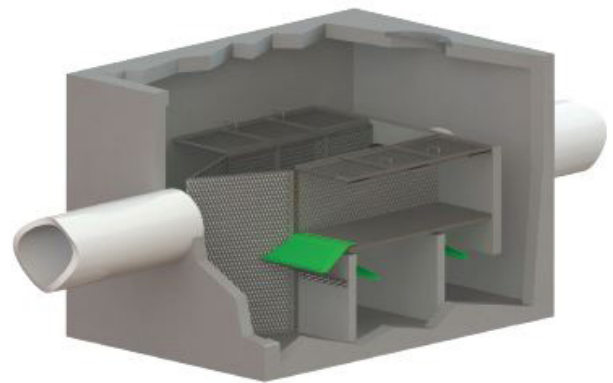
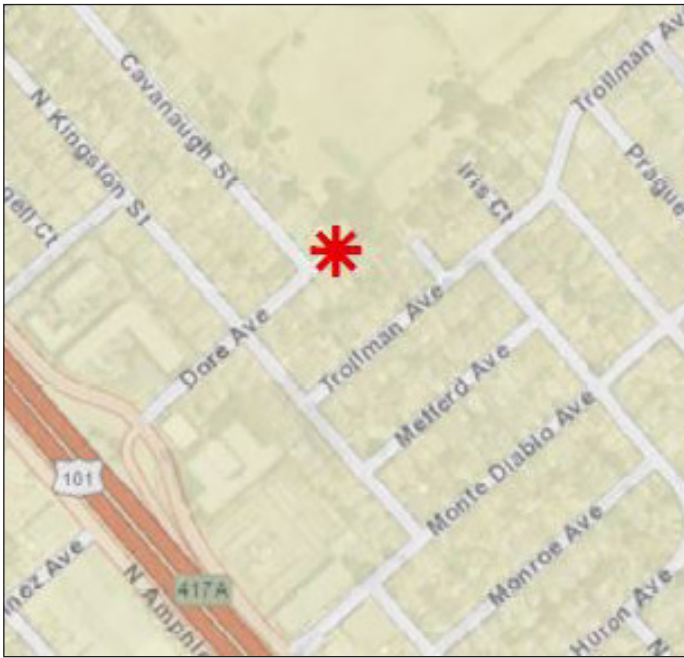


# TRASH CAPTURE – DORE AVENUE

The project will install two trash capture devices along two storm sewer lines before the outfall on Dore Avenue.

## Area Map



SPECIFICATIONS SHEET SHOWING THE TRASH CAPTURE DEVICES SELECTED FOR THIS PROJECT

## Timeline

Construction is anticipated to begin in May 2018.

## Partners

Lead Agency: City of San Mateo

Schaaf and Wheeler were engaged for design services.

## Funding

This project is estimated to cost a total of \$480,000, to be paid out of the City of San Mateo's Solid Waste fund.

## Results

This project is one piece of the City of San Mateo's efforts to meet the Municipal Regional Stormwater Permit requirements mandating a 100% reduction of trash reaching the bay through storm sewers by 2022. This project is estimated to supply a 15% trash reduction. Additional trash capture devices are planned for future years.