

Safe Routes to School In San Mateo County

June 17, 2021


Vanessa Castro

Safe Routes to School Project Specialist

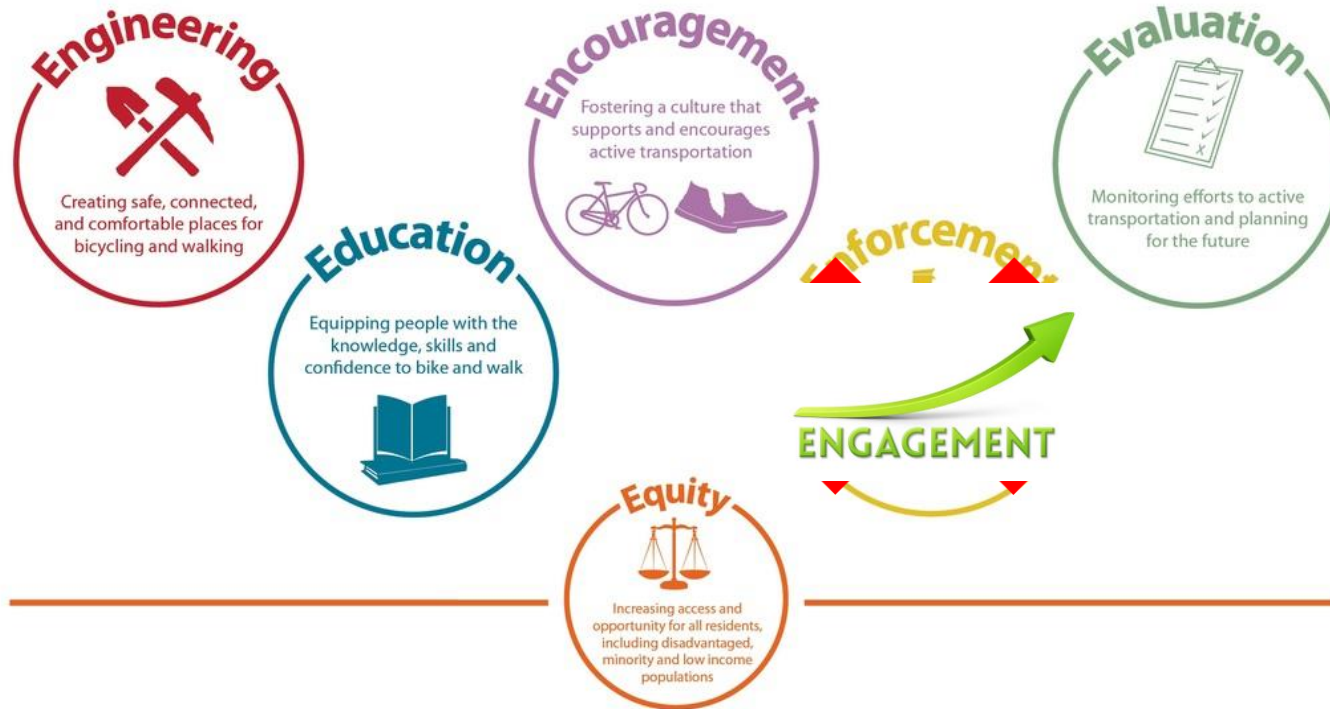
San Mateo County Office of Education



Overview

- 6 E's
 - SMCOE SRTS Grant Structure and Funding
 - Teacher Fellowship Program
 - Parent/Caregiver Survey Results
 - Pandemic Adaptations
 - School Streets
- 

The 6 E's of Safe Routes to School



Credit: Oregon SRTS

Grant Program

2019-2020

- 17 grantees
- \$240,000 - NI



2020-2021

- 20 grantees
- \$253,000 - NI + \$121,000 - I (TA)



Safe Routes to Schools Partners and Shared Goals

Safe Routes to School (SRTS)

Partners:

- Bay Area Bike Mobile
- Marine Science Institute
- Perfection on Wheels
- Parisi
- Alta
- Kimley Horn
- Strategic Energy Innovations
- Kid Power
- SVBC
- YBike

Requirements:

- SRTS Coordinator meetings
- Participate in education and encouragement events
- Promote walking and biking

Funder: City/County Association of Governments (C/CAG)

Shared Program Goals:

- Educate and encourage children and their families on safe walking and biking

Shared Expectations:

- County-wide Walk & Roll to School Days
- Parent/Caregiver Survey, Student Travel Tallies
- Promotion of active transportation

Shared Partners:

- Silicon Valley Bicycle Coalition
- Ybike
- Bay Area Children's Theatre

Active Transportation Program (ATP) Grant

Partners:

- SVBC
- YBike
- Marine Science Institute
- Alta
- San Mateo County Office of Education STEAM Center

Requirements:

- Implement in-class curriculum
- Participate in education and encouragement events

Funder: ATP Cycle 1 - Caltrans

Office of Traffic Safety (OTS) Grant

- Meet regularly (up to once a month) at school site
- Pedestrian Education + a bike rodeo
- \$600 worth of traffic safety supplies
- Free helmets
- Educational traffic safety materials

Funder: CA Office of Traffic Safety



2021-2022 Grant Funding

21-22 School Year Grant
is Now Open!

Find all the dates,
information and forms
here:

smcoe.org/srts

Grant Applications are
due: June 23rd by 5:00
pm



The SRTS Team



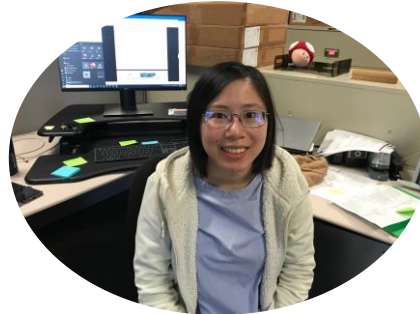
Theresa
Coordinator



Vanessa
Project Specialist



Sonia
Americorps Fellow



Spring
Administrative Assistant



Isabella
Americorps Fellow



Carlene
Coastside Contract

2020-21 Partners



Solutionary Teacher Fellowship *2021-2022*

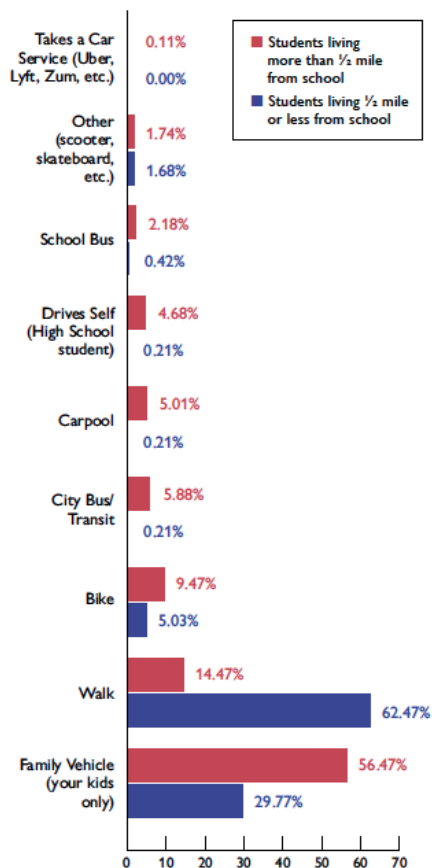
Summer Institute - Transportation



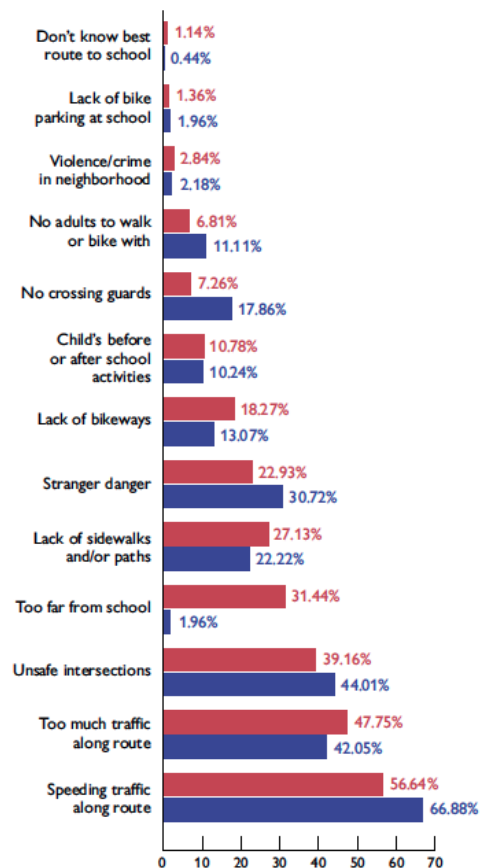
<http://tinyurl.com/SMCOE-STF>

October 2019 - March 2020

How does your child usually travel to school?



What are your top three concerns regarding your child or children walking and/or biking to school?



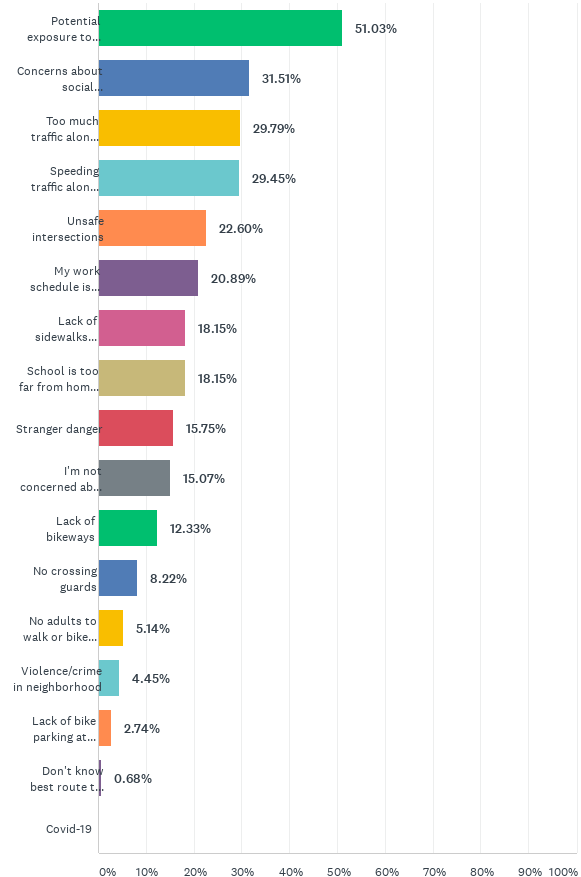
2020-2021 Survey Results

Potential Exposure to
COVID-19

Concerns About Social
Distancing

Too Much Traffic Along
Route/Speeding Along
Route

Q41 When your child/children return to school in-person, either full-time or part-time, what are the challenges or concerns you have about getting them to/from school? Select all that apply.



Pre-Pandemic



A background image of red school lockers with black handles and combination locks. The lockers are arranged in rows and columns, creating a grid-like pattern. The text is overlaid on this background.

CORONAVIRUS
ALL SCHOOLS CLOSED

Safe Routes to Zoom

Safety Patrol Zoom Sessions

Food Bank Distribution

Safe Routes to Anywhere

Teddy Bear Challenge

Virtual Walk Audit &
Engineering

Escape Room



Safety Patrol Zoom



Safe Routes to Anywhere



www.tinyurl.com/SafeRoutesSMC

Food Bank Distribution

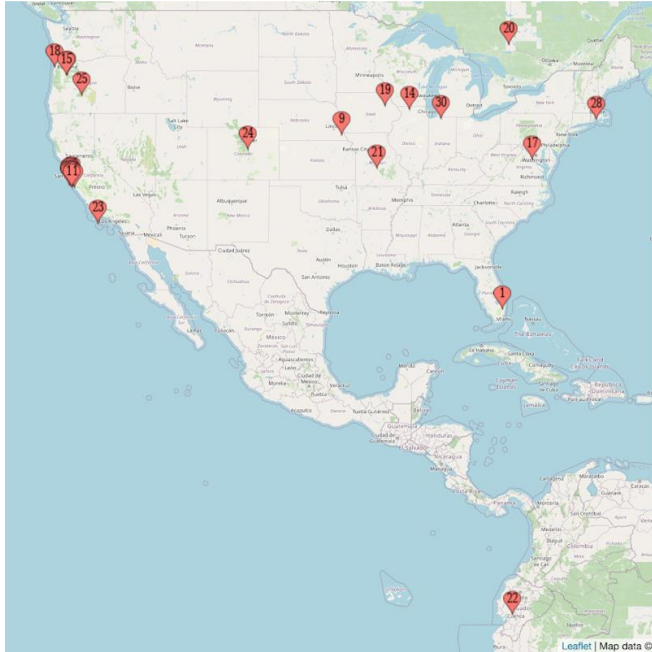


Socially Distanced Bike Rodeos



Escape Room

www.tinyurl.com/SRTSEscapeRoom

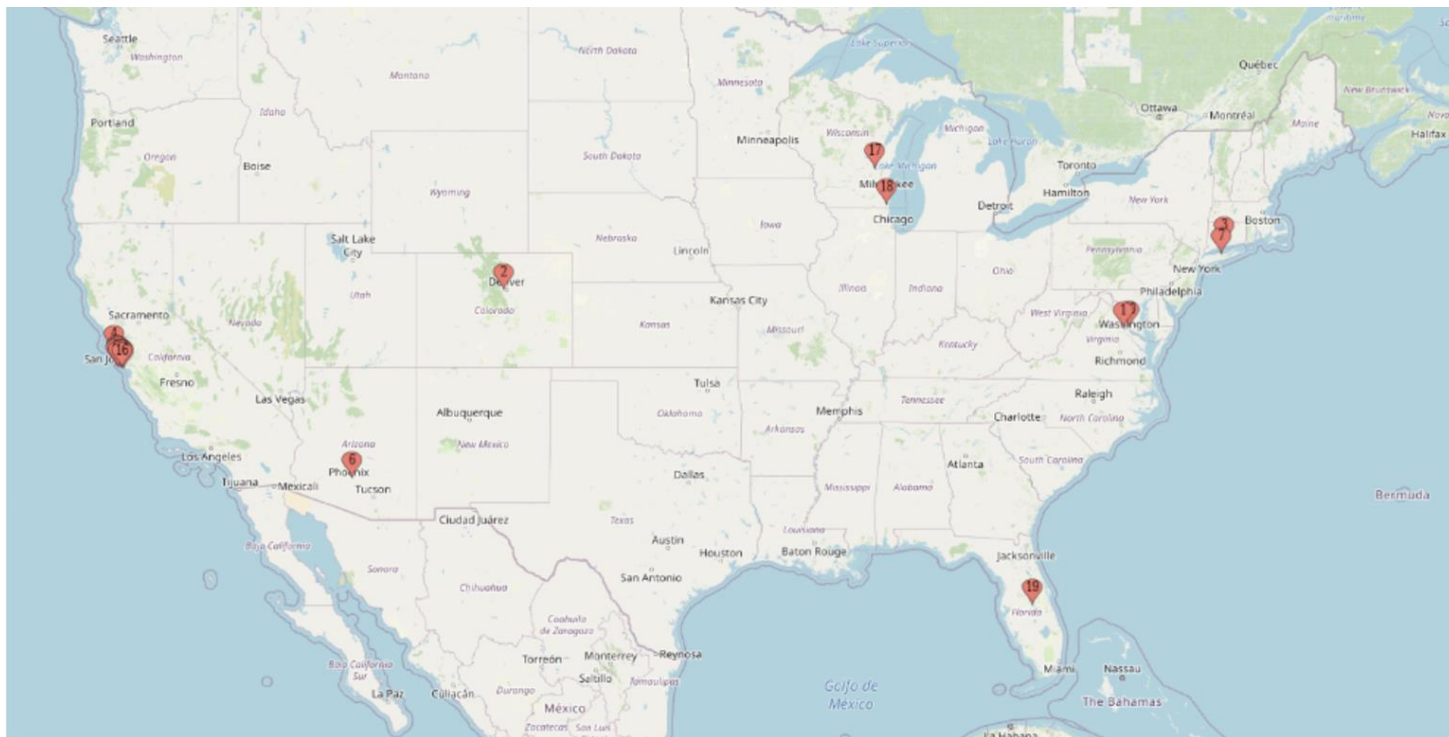


**SAFE ROUTES
TO SCHOOL**

Baby Yoda's Safe Journey

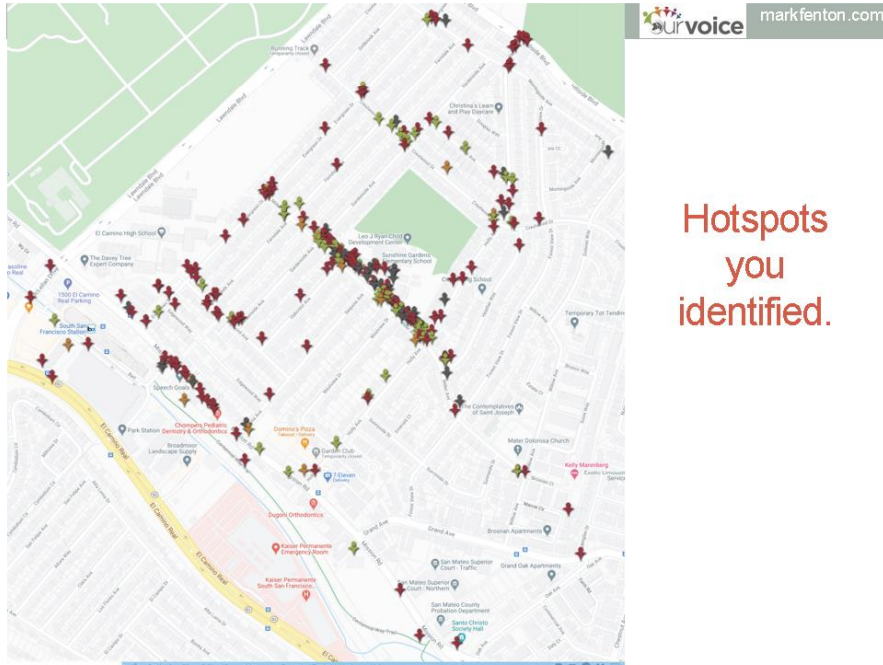


Ruby Bridges Walk to School Day



www.tinyurl.com/RubyBridgesWalk

Supporting a Virtual Walk Audit



3 Ps:

Programs: “What makes it easy or hard to walk or bike in the Sunshine Gardens neighborhood? What ideas do you have for making it better?”

Projects: physically improve walking/biking infrastructure
“¿Que hace que sea facil o

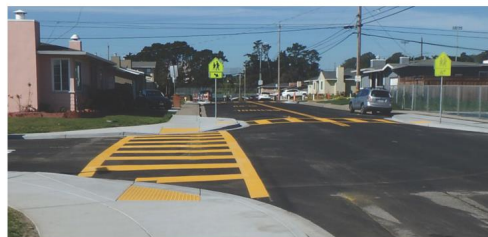
Policies: “¿Que hace que sea difícil caminar o andar en bicicleta en el vecindario de Sunshine Gardens? ¿Qué ideas tienes para mejorarlo?”

practices or procedures to improve conditions for walking/biking

San Mateo County: Supporting Back to School Travel During COVID-19



Healthy School Travel at
Sunshine Gardens Elementary



An aerial photograph of a school street scene. On the left, a playground area is visible with various equipment and orange traffic cones. A paved path runs alongside a large, leafy tree. To the right of the tree is a sidewalk with a blue 'P' parking sign. Further right is a multi-story building with a light-colored facade and a series of rectangular protrusions on its upper levels. The word 'SCHOOL' is written vertically in large, dark letters on the building's side. A few people are walking on the sidewalk. The image is framed by a white border with black corner brackets.

Lessons Learned and the Future of SRTS



Thank You!
vcastro@smcoe.org