



# **BAY TO SEA TRAIL FEASIBILITY STUDY**

**SAN MATEO COUNTY  
BICYCLE AND PEDESTRIAN ADVISORY  
COMMITTEE (BPAC) MEETING**

**2.16.2023**

# WHO ARE WE?

## PROJECT TEAM



### PROJECT LEAD

**RACHAEL FAYE,**  
PUBLIC ACCESS PROGRAM MANAGER

**BRYANNA WHITNEY,**  
PUBLIC ACCESS PROJECT MANAGER

### CONSULTANT TEAM

**JESSE JONES, PLACEWORKS**

← ME

TOOLE DESIGN - TRANSPORTATION & ENGINEERING  
H.T. HARVEY & ASSOCIATES - BIOLOGY & OPEN SPACE RESOURCES  
TIMOTHY C. BEST - GEOLOGY & TRAIL DESIGN  
INCOMMON - COMMUNITY ENGAGEMENT FRAMEWORK  
OUTREACH AND ENGAGEMENT SUPPORT

### BAY TO SEA TRAIL PLANNING COALITION

CALIFORNIA STATE COASTAL CONSERVANCY

CALIFORNIA STATE PARKS, SANTA CRUZ DISTRICT

CITY OF HALF MOON BAY

CITY OF REDWOOD CITY

COASTSIDE LAND TRUST

COUNTY OF SAN MATEO

GOLDEN GATE NATIONAL RECREATION AREA (GGNRA)

MIDPENINSULA REGIONAL OPEN SPACE DISTRICT (MIDPEN)

PENINSULA OPEN SPACE TRUST (POST)

SAN FRANCISCO PUBLIC UTILITIES COMMISSION (SFPUC)

US FISH AND WILDLIFE, BAIR ISLAND

CITY OF EAST PALO ALTO - *INVITATION EXTENDED*

# BACKGROUND

## VISION MAP



# BACKGROUND

## THE JOURNEY



# WHAT ARE WE DOING NOW?

## BAY TO SEA TRAIL FEASIBILITY STUDY



### QUESTIONS FOR THE STUDY

WHO IS THE BAY TO SEA TRAIL USER?

WHAT IS THE BAY TO SEA TRAIL EXPERIENCE?

WHERE IS THE BAY TO SEA TRAIL ROUTE?

HOW IS IT IMPLEMENTED AND WHAT ARE SOME SHORT TERM GOALS?

# WHAT CAN THE TRAIL BE?

## USER EXPERIENCE

### A TRAIL FOR ALL



Family-friendly bicycle, pedestrian, and equestrian options, combined where appropriate and feasible.

### A COHERENT TRAIL EXPERIENCE



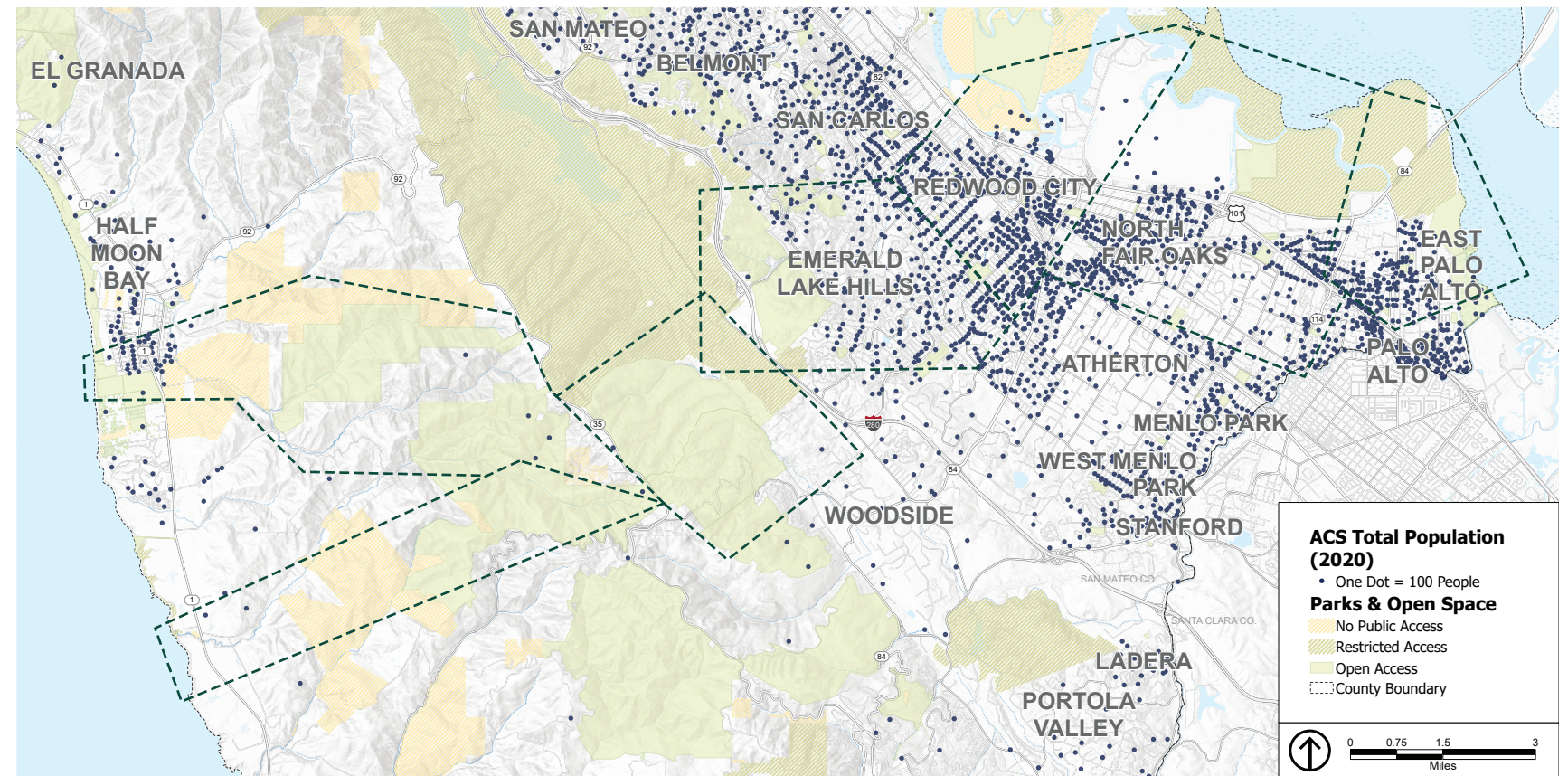
Consistency and continuity along the entire corridor

### COMMUNITY CONNECTIONS



A corridor for the full Bay to Sea experience or for everyday destinations

## POPULATION DENSITY



# WHAT CAN THE TRAIL BE?

## USER EXPERIENCE

### A TRAIL FOR ALL



Family-friendly bicycle, pedestrian, and equestrian options, combined where appropriate and feasible.

### A COHERENT TRAIL EXPERIENCE



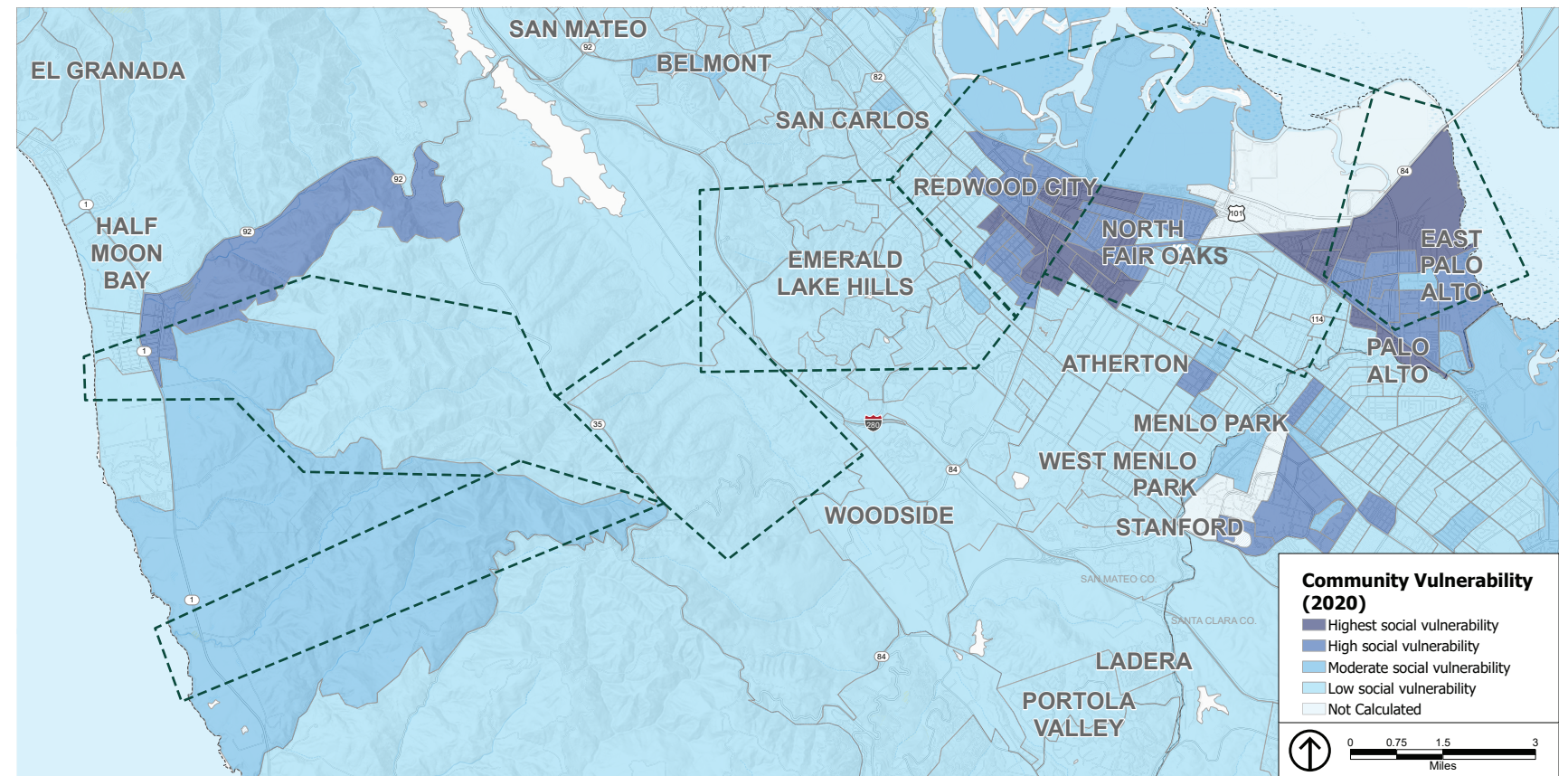
Consistency and continuity along the entire corridor

### COMMUNITY CONNECTIONS



A corridor for the full Bay to Sea experience or for everyday destinations

## COMMUNITY VULNERABILITY



Source: San Francisco Bay Conservation and Development Commission (BCDC)

# WHAT CAN THE TRAIL BE?

## USER EXPERIENCE

### A TRAIL FOR ALL



Family-friendly bicycle, pedestrian, and equestrian options, combined where appropriate and feasible.

### A COHERENT TRAIL EXPERIENCE

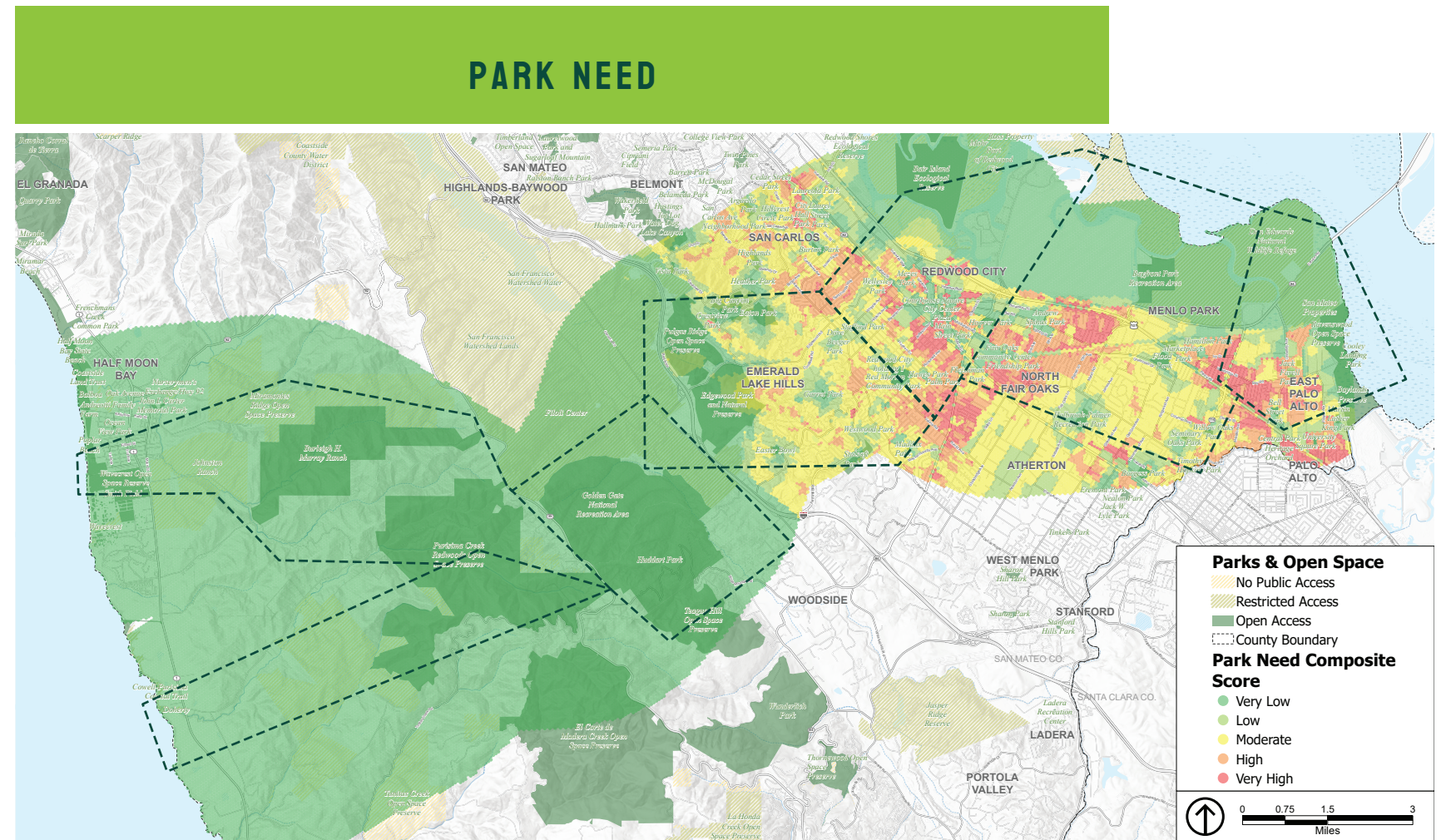


Consistency and continuity along the entire corridor

### COMMUNITY CONNECTIONS



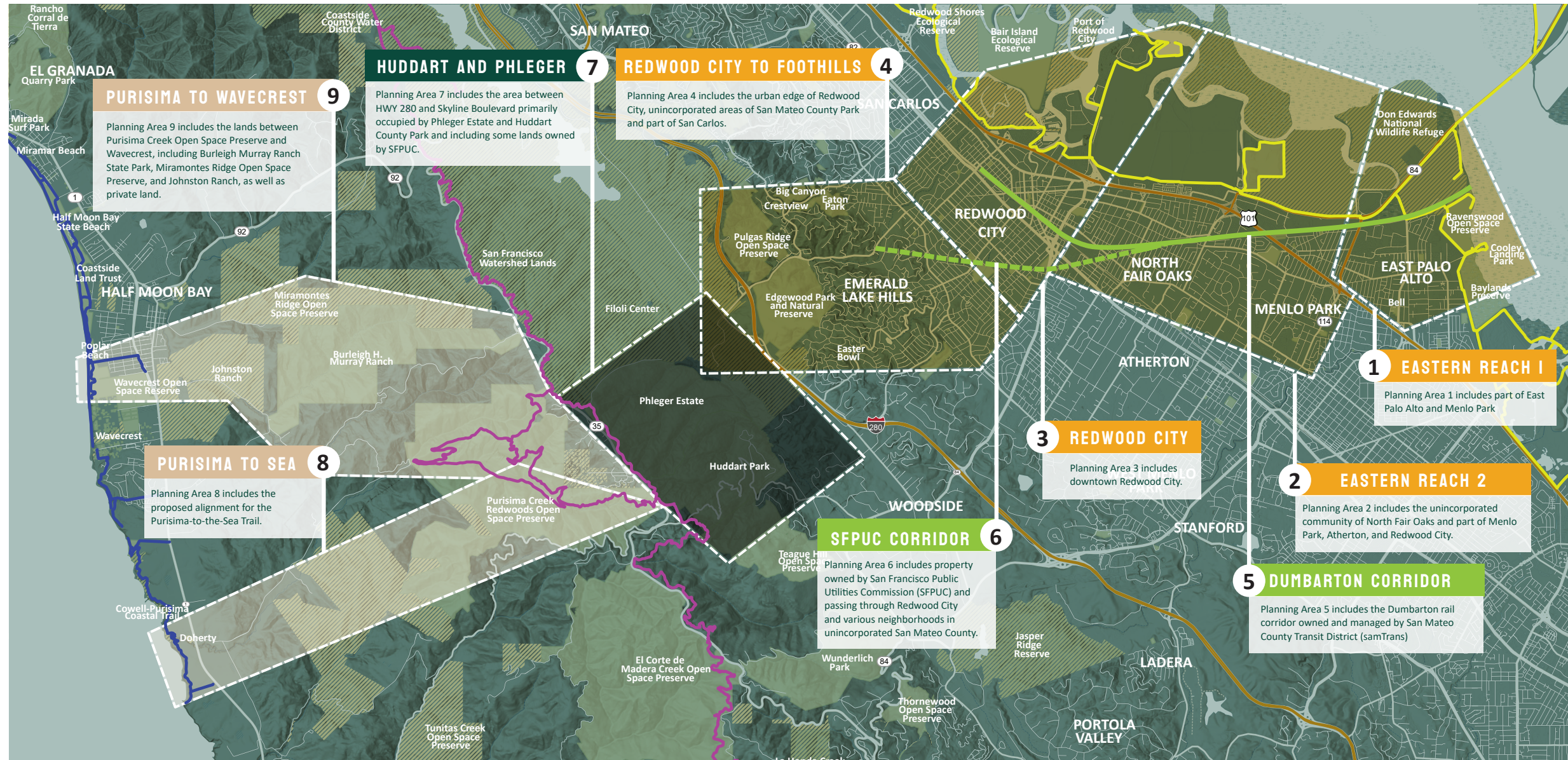
A corridor for the full Bay to Sea experience or for everyday destinations





# WHERE DOES THE TRAIL GO?

## PLANNING STUDY AREAS



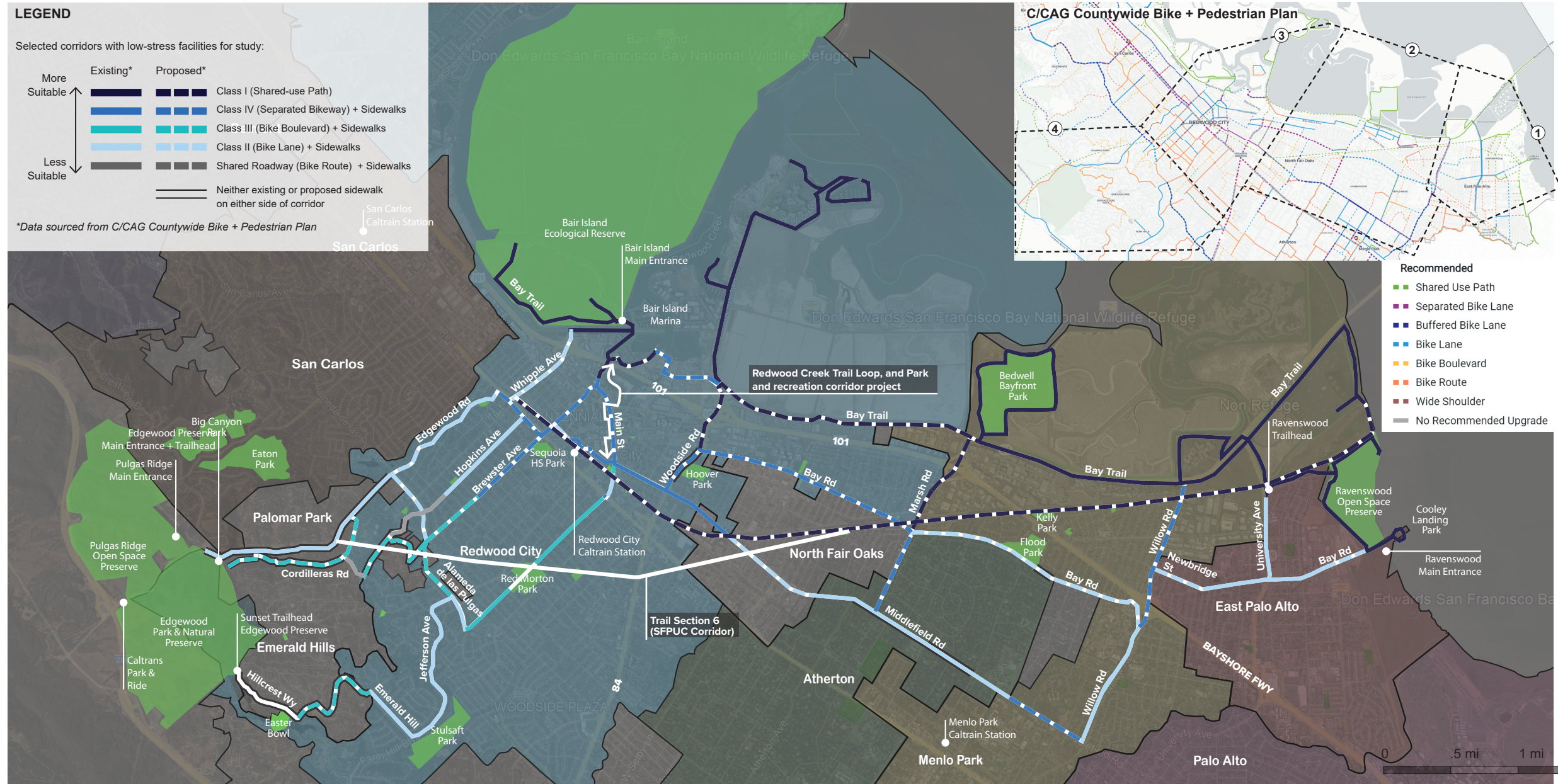
RIDGE TO SEA

FOOTHILLS TO RIDGE

BAY TO FOOTHILLS

# WHERE DOES THE TRAIL GO?

## BAY TO FOOTHILLS PLANNING AREAS



# WHERE DOES THE TRAIL GO?

## BAY TO FOOTHILLS PLANNING AREAS



# HOW / WHEN?

## LONG TERM VISION + SHORT TERM OPTIONS

### HOW WILL THE BAY TO SEA TRAIL BE IMPLEMENTED?

The Bay to Sea Trail will follow

**Existing** + **Proposed** + **New**

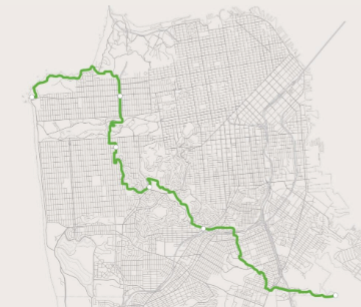
**Trails, Sidewalks, Bike Routes, & Roadways**  
to achieve the full corridor.

### SF BAY TRAIL: INCREMENTAL IMPLEMENTATION



### THE CROSTOWN TRAIL: CONNECTING EXISTING INFRASTRUCTURE

## The Crosstown Trail: San Francisco in 17 Miles



Connecting San Francisco from the southeast to the north, the trail runs through hidden trails, public parks, shopping centers, and community gardens along the way.

The trail is the work of a small group of local volunteers working with the community and healthy adventuring outdoors.

You can walk it, run it, or bike it (in either direction!). You can do it in one day or just try a section. Get some fresh air, explore, and be sure to tell us about your adventure at #sfcrosstown.

THIS IS A LONG TERM PROJECT

### BRAIDED TRAIL FOR SEPARATE USES



### URBAN GREENING OPPORTUNITY SITES



# QUESTIONS FOR YOU

---

## BAY TO SEA TRAIL FEASIBILITY STUDY

 DO YOU HAVE ANY INPUT ON WHERE TO FOCUS TRAIL PLANNING EFFORTS?

 WHAT DO YOU THINK ABOUT A TRAIL THAT FOLLOWS EXISTING STREETS?

 WHAT DO YOU THINK IS MOST IMPORTANT FOR TRAIL IDENTITY?



**BAY TO SEA TRAIL FEASIBILITY STUDY**

**THANK YOU!**

**QUESTIONS/COMMENTS: [JJONES@PLACEWORKS.COM](mailto:JJONES@PLACEWORKS.COM)**