



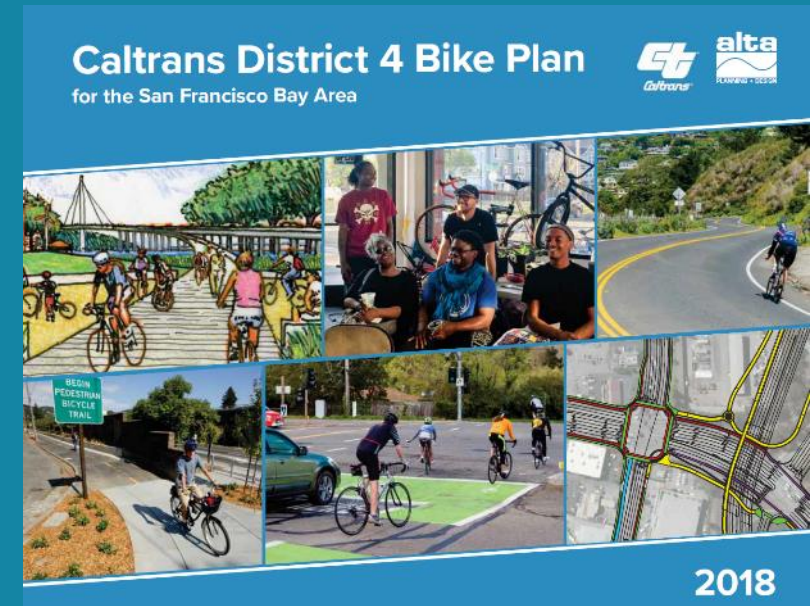
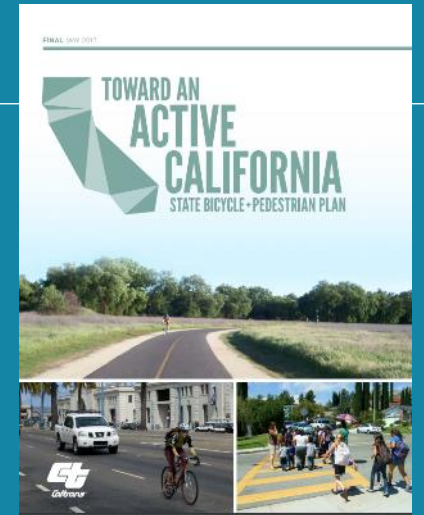
CALTRANS
BAY AREA

Bike Plan Update



Why Update the Bike Plan?

- Current D4 Bike Plan is 5 years old
- Performance Tracking
- Build on success and identify more paths forward
- Opportunity for Engagement
- Changing mobility trends



Timeline



Draft Best Practices

Draft Collision Analysis

Draft Progress Report

Updated Story Map

Draft Tiered List of Location Based Needs

Analysis
Level of Traffic Stress, Potential road diet corridors, Safety, Mobility, Equity, Database of locally identified needs on SHS

Round 1
Public / Stakeholder Engagement

Round 2
Public/ Stakeholder Engagement



Progress on the 2018 Bike Plan

dot.ca.gov/d4bikeplan update



Broadway Bike Lanes

Broadway (SR-12) in the City of Sonoma was restriped to include bike lanes and enhanced pedestrian crossings



St. Helena to Calistoga Napa Valley Vine Trail

Project will construct 6.8 miles of a multi use path adjacent to (SR-28)



Richmond San Rafael Bridge Plot Program

Pilot program that installed a 10 ft wide multi use path to connect Marin and Contra Costa County



Gilman Street Overcrossing

Project will install a ped/bike bridge over the I-80 at Gilman Street



North South Greenway Gap Closure

Greenway replaced a 4 ft sidewalk along US 101 with a 12 ft multi use path



Encinal Bike Lanes

Encinal (SR-61) in the City of Alameda was restriped to include bike lanes and enhanced pedestrian crossings



Alemany Interchange Improvements

New north-south pathway for bikes connects San Bruno Ave to the Alemany Farmers Market



El Camino Belmont Connector Path

Short multi use path around El Camino (SR-82) connects under the Caltrain tracks.



Hwy 101 Ped/Bike Bridge at Adobe Creek

The Hwy 101 Ped/Bike Bridge connects with the San Francisco Bay Trail, Byxbee Park and Baylands Nature Preserve



US 101/Blossom Hill Rd Interchange Improvements

Project constructed a bridge structure over US 101 that included a multi use path



Draft Vision and Goals

By 2040, people in California of all ages, abilities, and incomes can safely, conveniently, and comfortably bike for their transportation needs.

SAFETY

Reduce the number, rate, and severity of bicycle involved collisions



MOBILITY

Increase biking by providing comfortable, convenient and connected network of bikeways

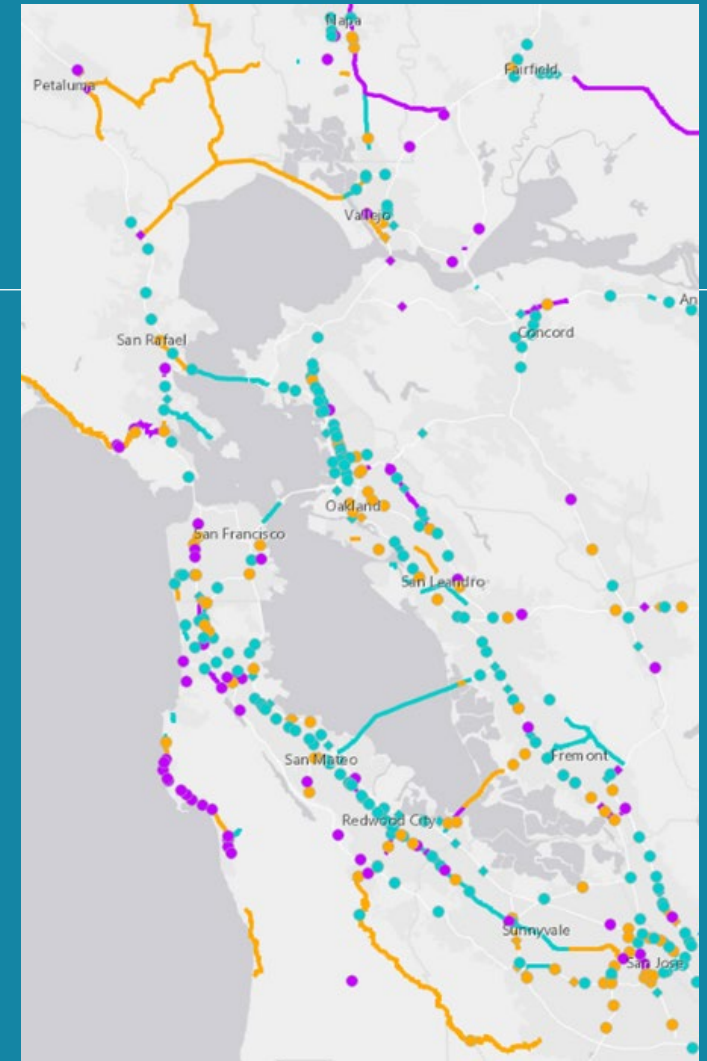
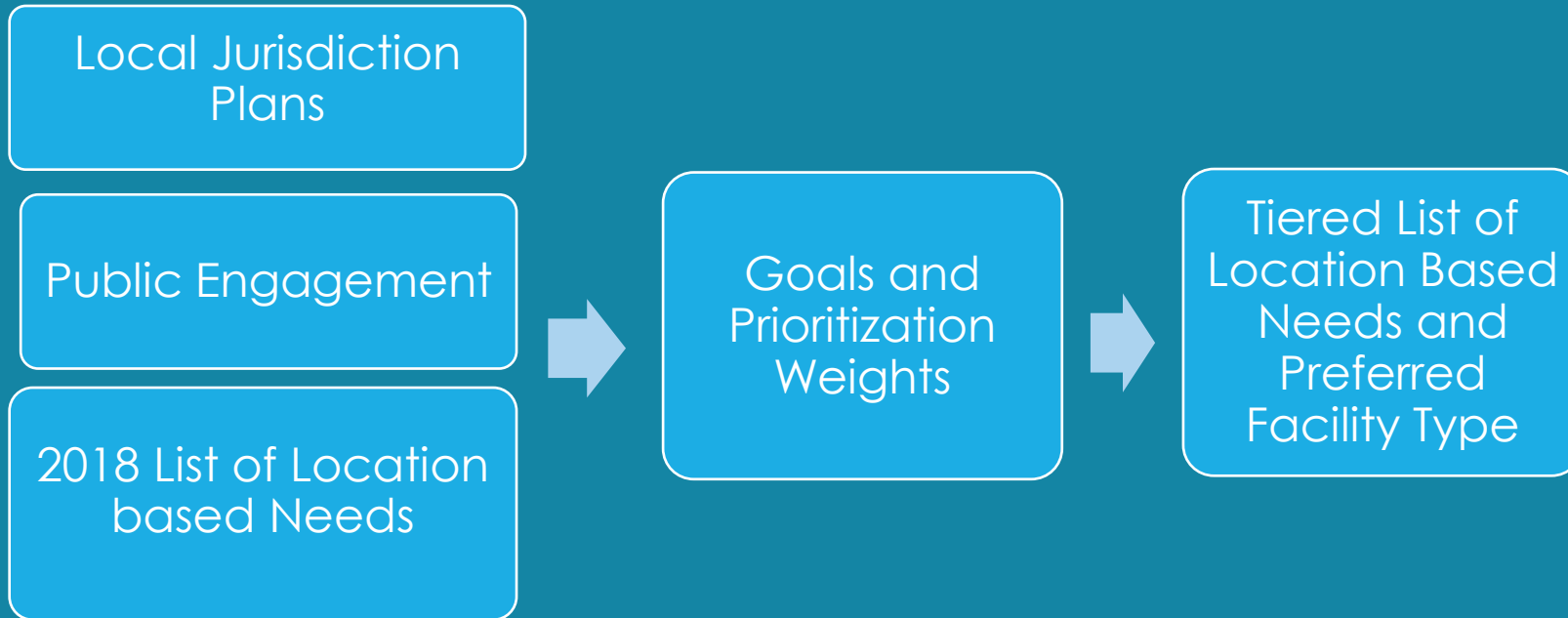


EQUITY

Eliminate barriers to biking, so that everyone has access to high quality biking infrastructure no matter their race, socioeconomic status, identity or where they live



Outcome



Web Survey and Map is live! Go to dot.ca.gov/D4BikeSurvey



Caltrans Bay Area Bike Plan Update Survey

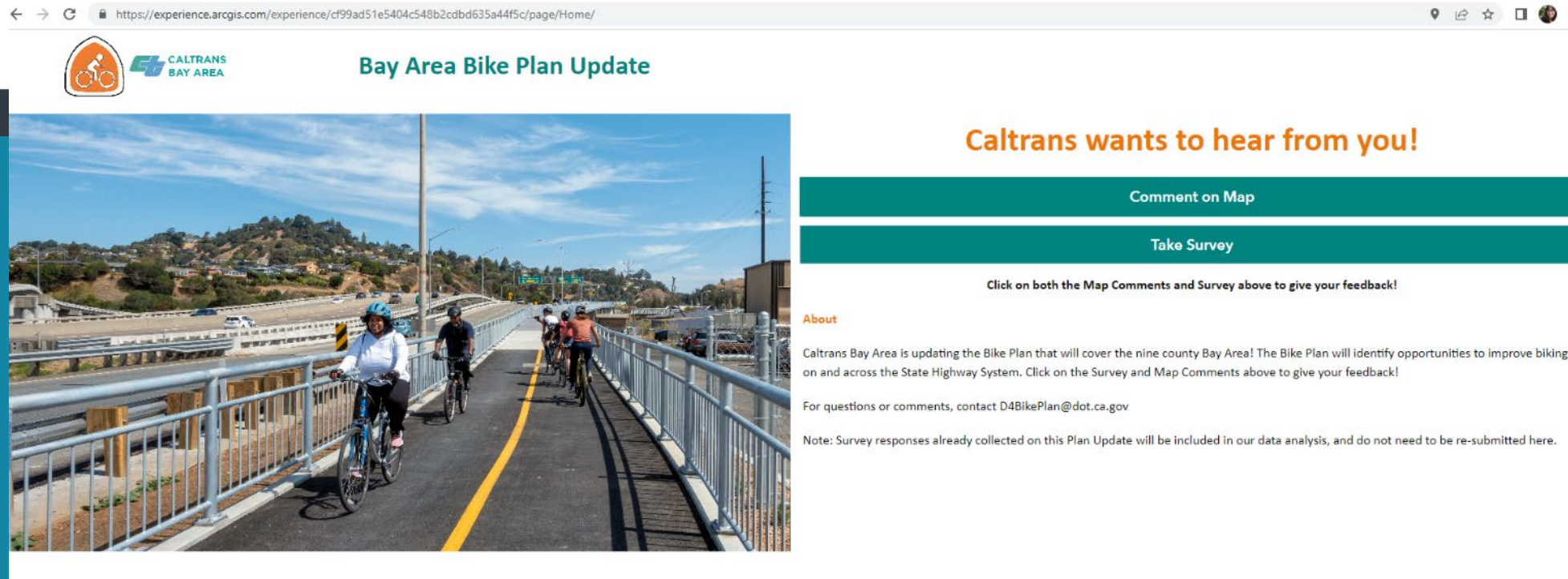


[Click here to take the survey!](#)


[¡Haga clic aquí para hacer nuestra encuesta!](#)

[点击这里参加我们的调查!](#)

[點擊這裡參加我們的調查!](#)



Bay Area Bike Plan Update



Caltrans wants to hear from you!

[Comment on Map](#)

[Take Survey](#)

Click on both the Map Comments and Survey above to give your feedback!

About

Caltrans Bay Area is updating the Bike Plan that will cover the nine county Bay Area! The Bike Plan will identify opportunities to improve biking on and across the State Highway System. Click on the Survey and Map Comments above to give your feedback!

For questions or comments, contact D4BikePlan@dot.ca.gov

Note: Survey responses already collected on this Plan Update will be included in our data analysis, and do not need to be re-submitted here.



Caltrans Bay Area Bike Plan Update Survey

Welcome to the Caltrans Bay Area Bike Plan Update Survey!

Caltrans Bay Area wants your input on which features will make biking on Caltrans facilities comfortable, convenient and connected! Share your feedback by taking our short survey, which will ask about improvements you want on Caltrans facilities as well as your biking habits. All questions are optional.

For additional background information, visit: <https://dot.ca.gov/d4bikeplanupdate>

1. How would you rank biking along or across Caltrans-owned roadways in the county where you live/bike most often?

Refer to the map below for Caltrans facilities (highlighted in yellow)
1 star is the worst ranking, and 10 stars is the best ranking.

Choose between 1 to 10 stars below.

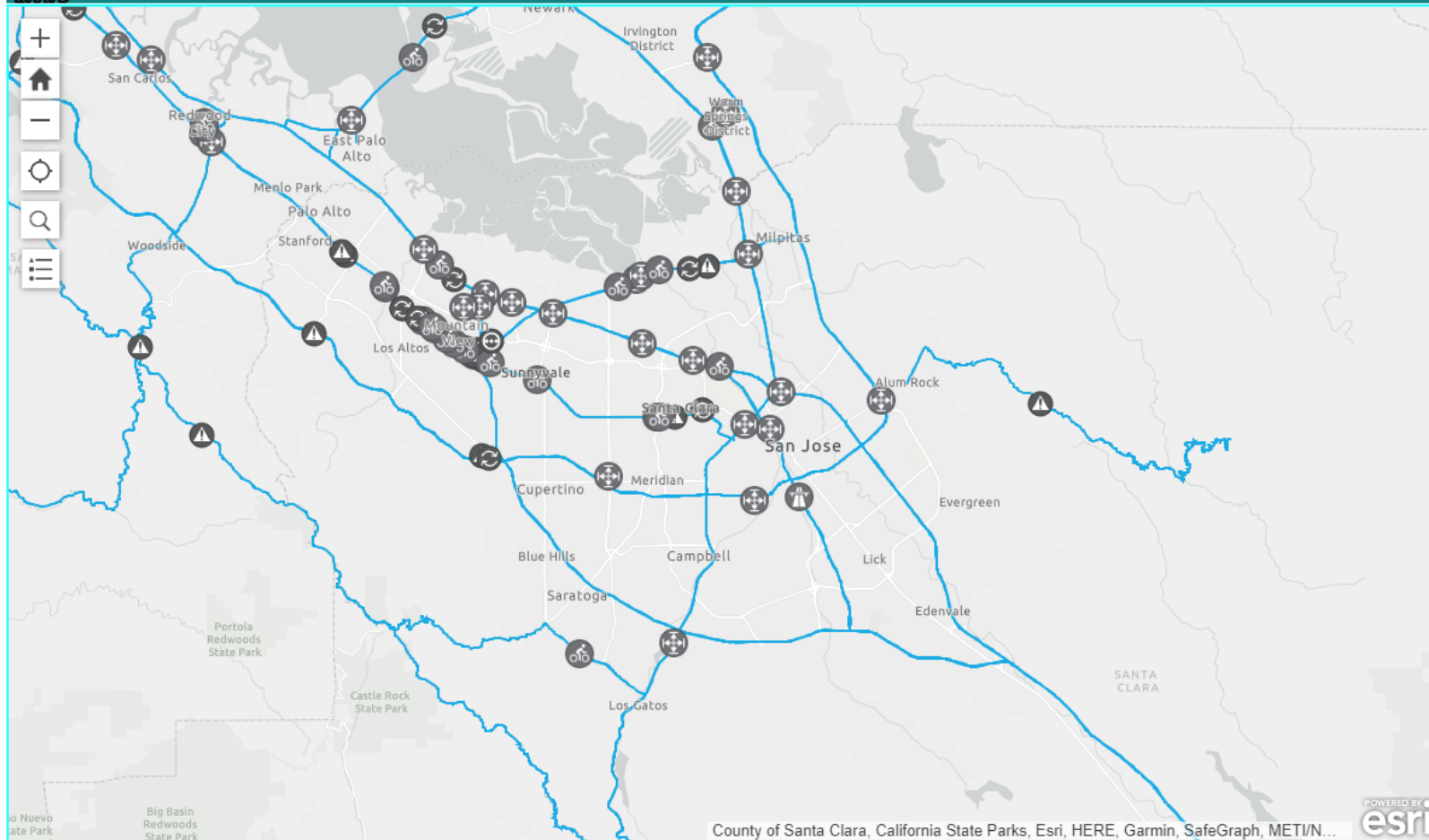


Caltrans roadways highlighted in yellow (includes crossing or riding along state highways)





Bay Area Bike Plan Update Comment Map ?



Bike Plan Comments

[+ Click here to submit a suggestion](#)

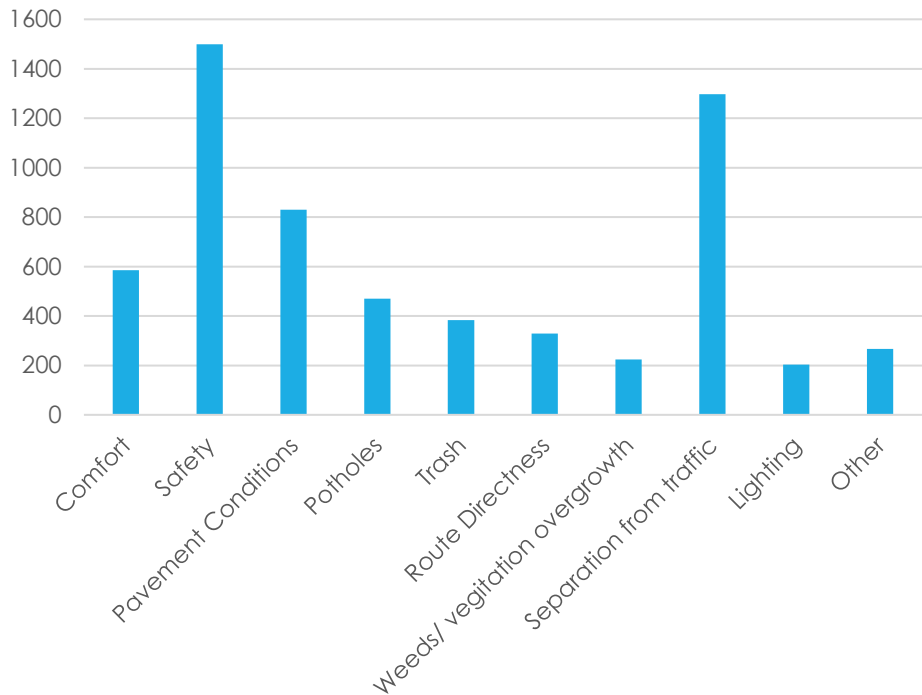
Safety	7
Safety	0
Challenging Crossing	1
Safety	0
Safety	0
Bikeway Improvement	2
Connectivity	0
Bikeway Improvement	6
New Connection	7
New Connection	12
Connectivity	0
Challenging Crossing	2

This map is for planning purposes only. To report an issue or concern with Caltrans, complete a Customer Service Request by going to csr.dot.ca.gov

What Have we Heard?



What issues do you have with biking on or across the State Highway System?



Sample Comments

"Bike infrastructure should be more convenient."

"Would like separated lanes, want to avoid biking on streets with cars to avoid fumes, hitting car doors and inattentive drivers."

"These roads are far too scary to bike along, but many are also very difficult to cross."

"Low number of freeway crossings"

"Not enough shoulder for bikes to be away from cars"

"My largest challenge with cycling on and around the Caltrans roadways is connectivity with the surrounding trails and bike paths."

- **Over 1,700 responses on the survey**
- **Main themes from outreach: safety, separation from traffic and connectivity.**

Key Questions for BPAC

- What do you want to see in the bike plan update?
- What are priority bikeway projects in San Mateo County on and across the state highway system?
- What elements from other bike/ped plans that you've seen that you think we should incorporate in our bike plan?
- What can Caltrans do to be a better partner with our local jurisdictions and public?





Questions/
Comments?
D4BikePlan@dot.ca.gov