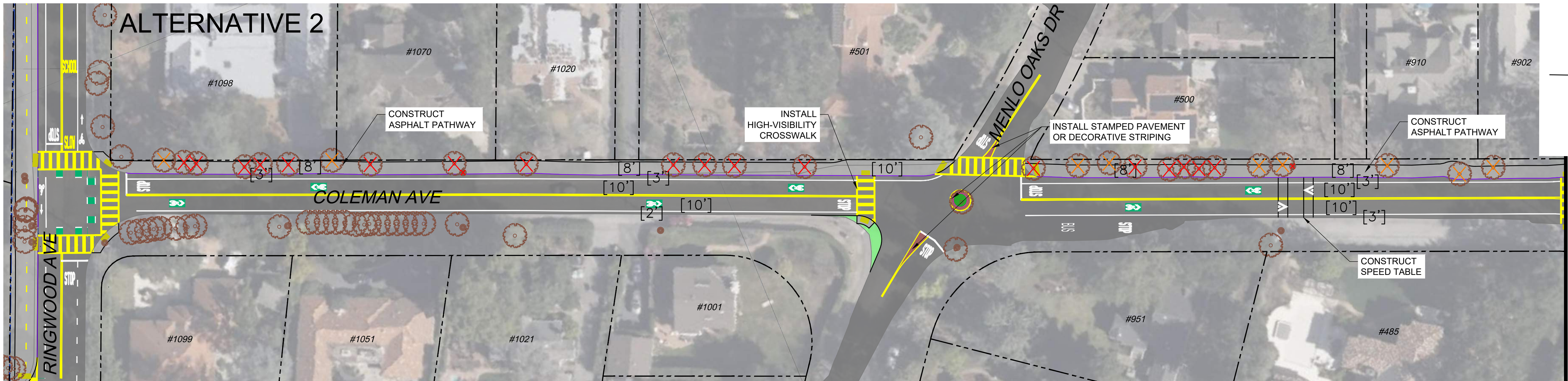
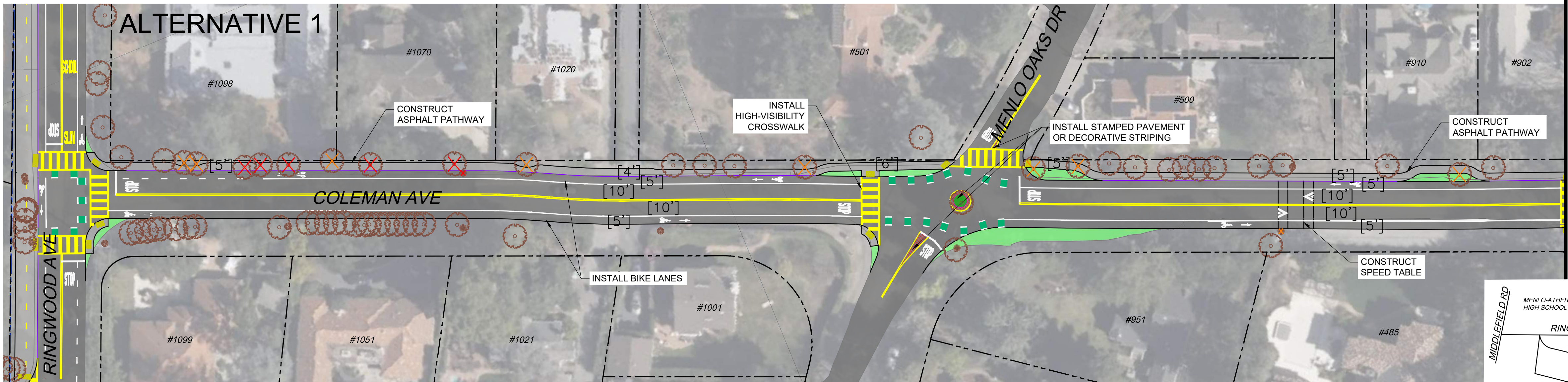
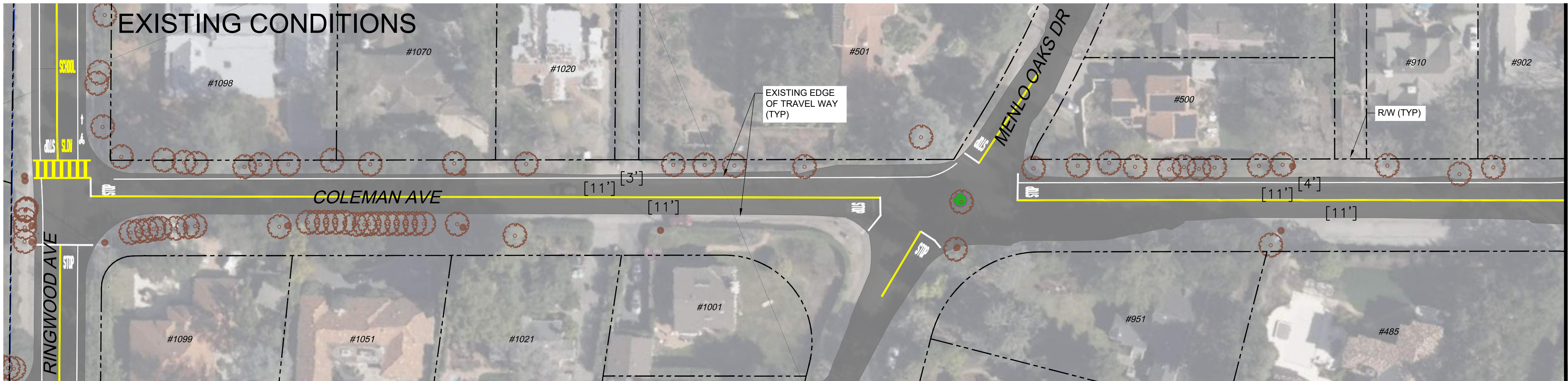


Sep 25, 2023 - 10:09am

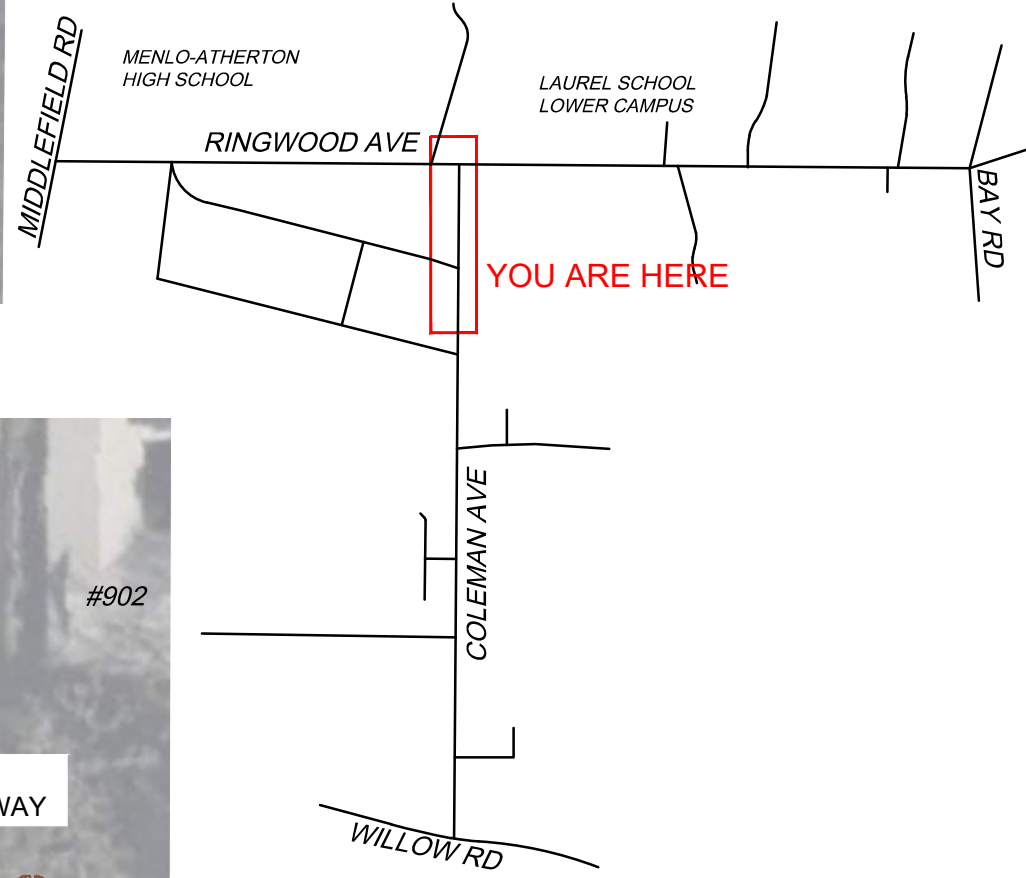
N:\AAA\SMX\SMX\SMX900-2 Coleman Avenue Design Alternatives\ACAD\SMX900-2-COMPILED.dwg

FOR REDUCED PLANS, THE
ORIGINAL SCALE IS IN INCHES



- LEGEND:**
- ASPHALT ROADWAY
 - ASPHALT PATHWAY
 - CONCRETE PATHWAY
 - EXISTING VEGETATION
 - PROPOSED VEGETATION
 - EXISTING CURB
 - EXISTING EDGE OF TRAVEL WAY
 - PROPOSED CURB
 - PROPOSED EDGE OF TRAVEL WAY
 - PROPOSED RAISED ELEMENT OR BARRIER
 - R/W AND PROPERTY LINES
 - APPROXIMATE CITY / COUNTY BOUNDARY
 - DETECTABLE WARNING SURFACE
 - EXISTING TREE OR UTILITY
 - TREE OR UTILITY IMPACT
 - POTENTIAL TREE OR UTILITY IMPACT

**PRELIMINARY
NOT FOR CONSTRUCTION**



**Whitlock & Weinberger
Transportation, Inc.**
490 Mendocino Avenue, Suite 201
Santa Rosa, CA 95401
(707) 542-9500 Fax (707) 542-9590



DRAWN BY
NGB

DESIGNED BY
SJM, CN

CHECKED BY
SMF

DATE

COLEMAN & RINGWOOD AVENUES
TRANSPORTATION STUDY

COLEMAN AVENUE SHEET 1

10% CONCEPT ALTERNATIVES

SCALE 1"=40'
DATE 9/25/23
JOB NO. SMX900-2
DRAWING NUMBER

Sep 25, 2023 -- 10:10am

N:\AAA\SMX\SMX\SMX900-2 Coleman Avenue Design Alternatives\ACAD\SMX900-2-COMPILED.dwg

FOR REDUCED PLANS, THE
ORIGINAL SCALE IS IN INCHES



- LEGEND:**
- ASPHALT ROADWAY
 - ASPHALT PATHWAY
 - CONCRETE PATHWAY
 - EXISTING VEGETATION
 - PROPOSED VEGETATION
 - EXISTING CURB
 - EXISTING EDGE OF TRAVEL WAY
 - PROPOSED CURB
 - PROPOSED EDGE OF TRAVEL WAY
 - PROPOSED RAISED ELEMENT OR BARRIER
 - R/W AND PROPERTY LINES
 - APPROXIMATE CITY / COUNTY BOUNDARY
 - DETECTABLE WARNING SURFACE
 - EXISTING TREE OR UTILITY
 - TREE OR UTILITY IMPACT
 - POTENTIAL TREE OR UTILITY IMPACT

**PRELIMINARY
NOT FOR CONSTRUCTION**

INSET MAP



**Whitlock & Weinberger
Transportation, Inc.**
490 Mendocino Avenue, Suite 201
Santa Rosa, CA 95401
(707) 542-9500 Fax (707) 542-9590



DRAWN BY
NGB

DESIGNED BY
SJM, CN

CHECKED BY
SMF

DATE

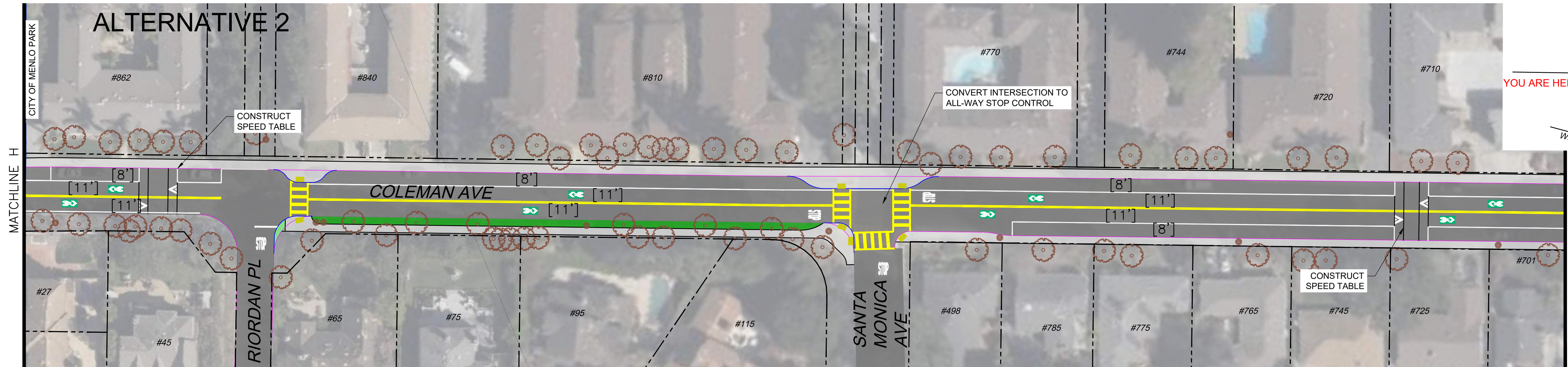
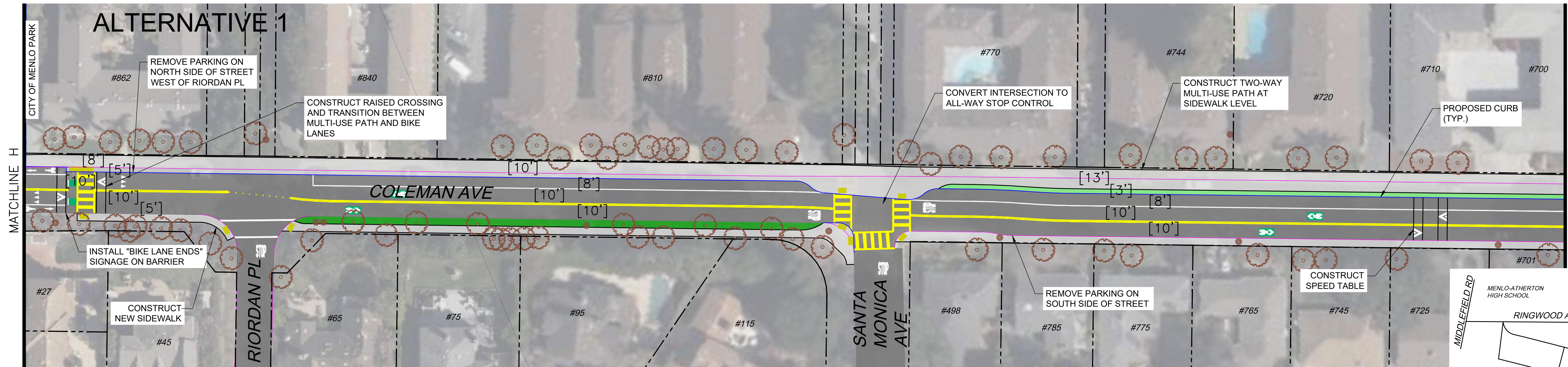
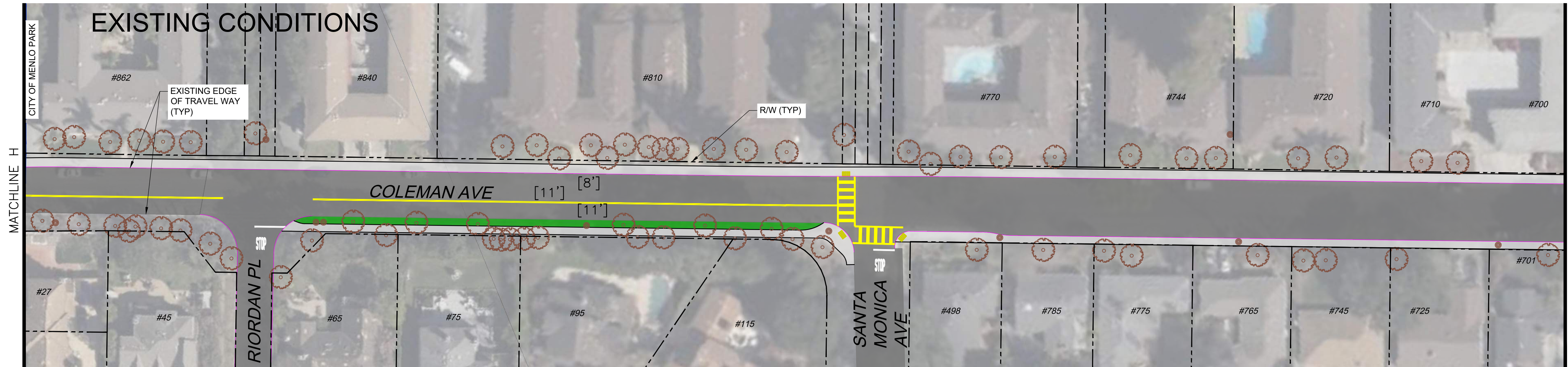
**COLEMAN & RINGWOOD AVENUES
TRANSPORTATION STUDY**
COLEMAN AVENUE SHEET 2
10% CONCEPT ALTERNATIVES

SCALE 1"=40'
DATE 9/25/23
JOB NO. SMX900-2
DRAWING NUMBER

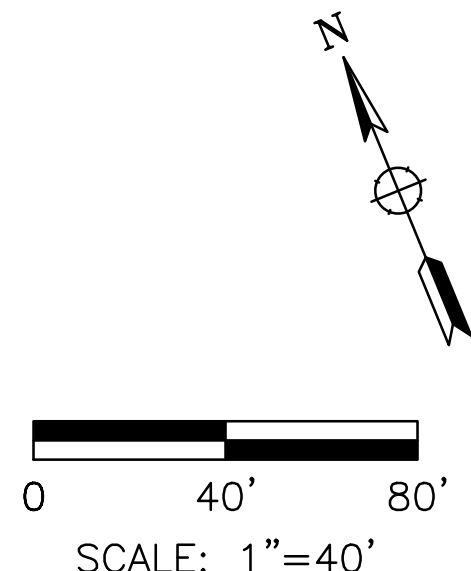
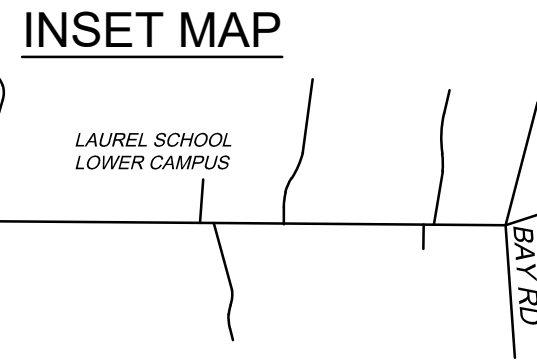
Sep 25, 2023 – 10:10am

N:\AAA\SMX\SMX\SMX900-2 Coleman Avenue Design Alternatives\ACAD\SMX900-2-COMPILED.dwg

FOR REDUCED PLANS, THE
ORIGINAL SCALE IS IN INCHES



PRELIMINARY
NOT FOR CONSTRUCTION



Whitlock & Weinberger
Transportation, Inc.
490 Mendocino Avenue, Suite 201
Santa Rosa, CA 95401
(707) 542-9500 Fax (707) 542-9590

DRAWN BY
NGB

DESIGNED BY
SJM, CN

CHECKED BY
SMF

DATE

COLEMAN & RINGWOOD AVENUES
TRANSPORTATION STUDY

COLEMAN AVENUE SHEET 3
10% CONCEPT ALTERNATIVES

SCALE 1"=40'

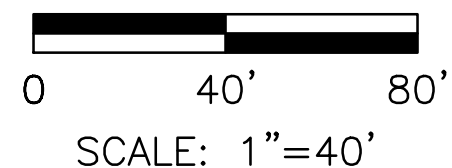
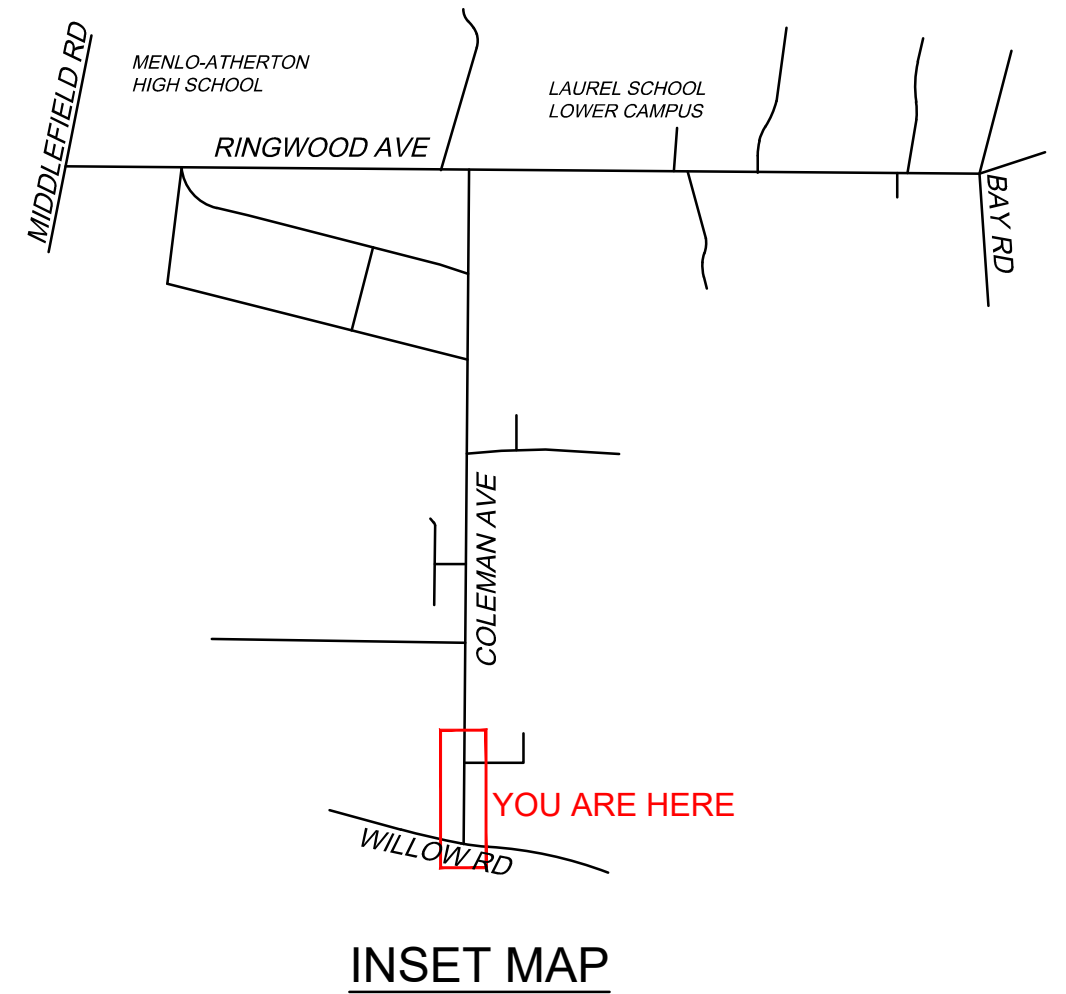
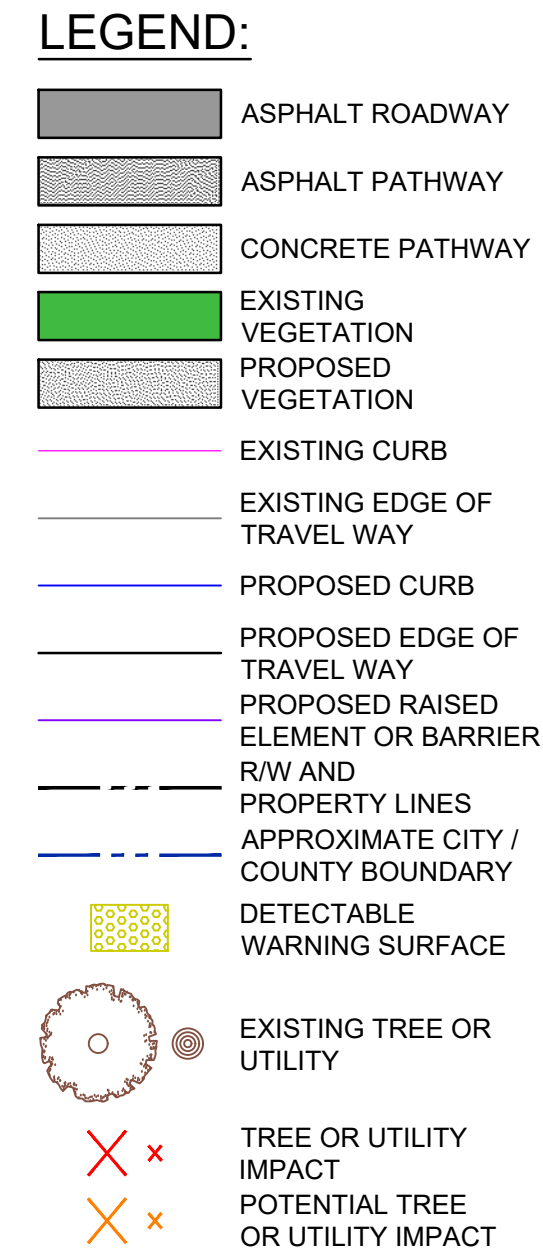
DATE 9/25/23

JOB NO. SMX900-2

DRAWING NUMBER

9 OF 10

N:\AAA\SMX\SMX\SMX900-2 Coleman Avenue Design Alternatives\ACAD\SMX900-2-COMPILED.dwg



CHECKED BY
SMF

DATE _____

TRANSPORTATION STUDY

COLEMAN AVENUE SHEET 4

DATE 9/25/23

JOB NO.
SMX900-2

10 OF 10