

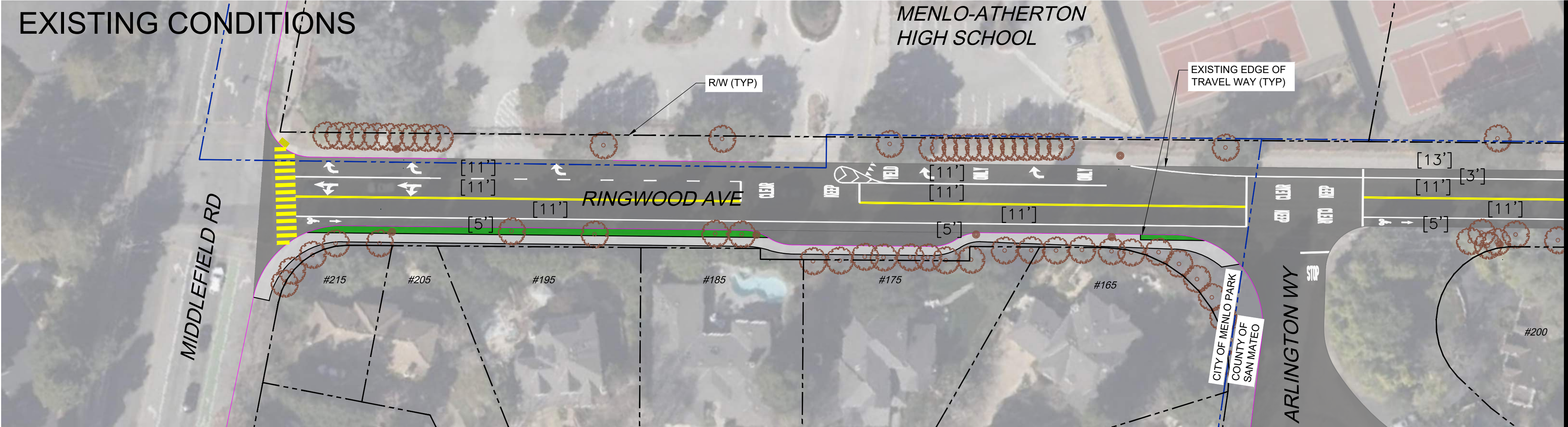
Sep 25, 2023 - 10:07am

N:\AAA\SMX\SMX\SMX900-2 Coleman Avenue Design Alternatives\ACAD\SMX900-2-COMPILED.dwg

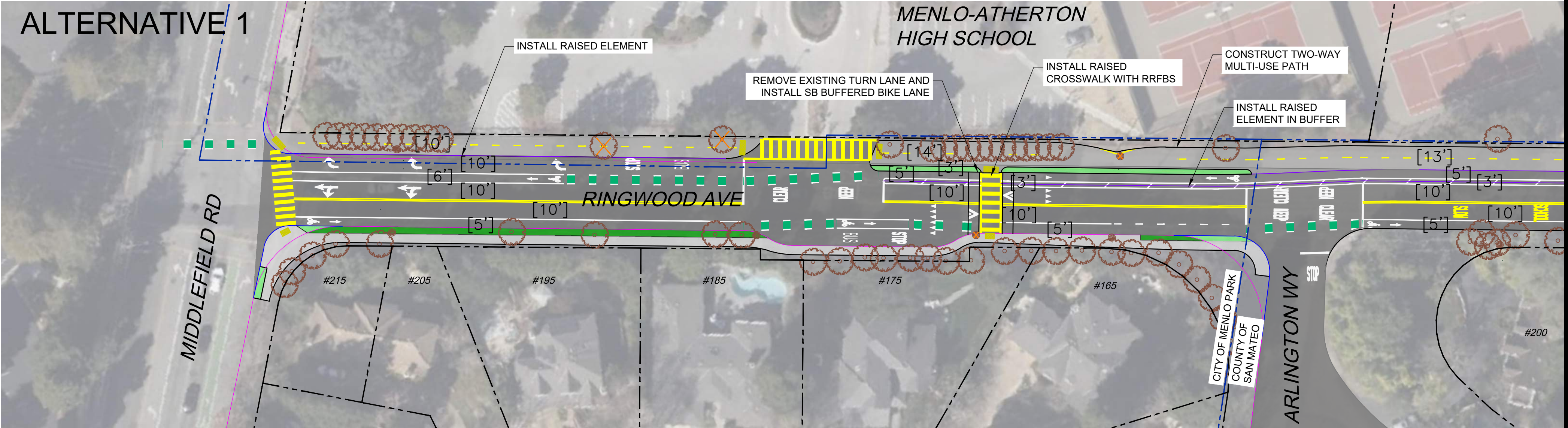
FOR REDUCED PLANS, THE
ORIGINAL SCALE IS IN INCHES



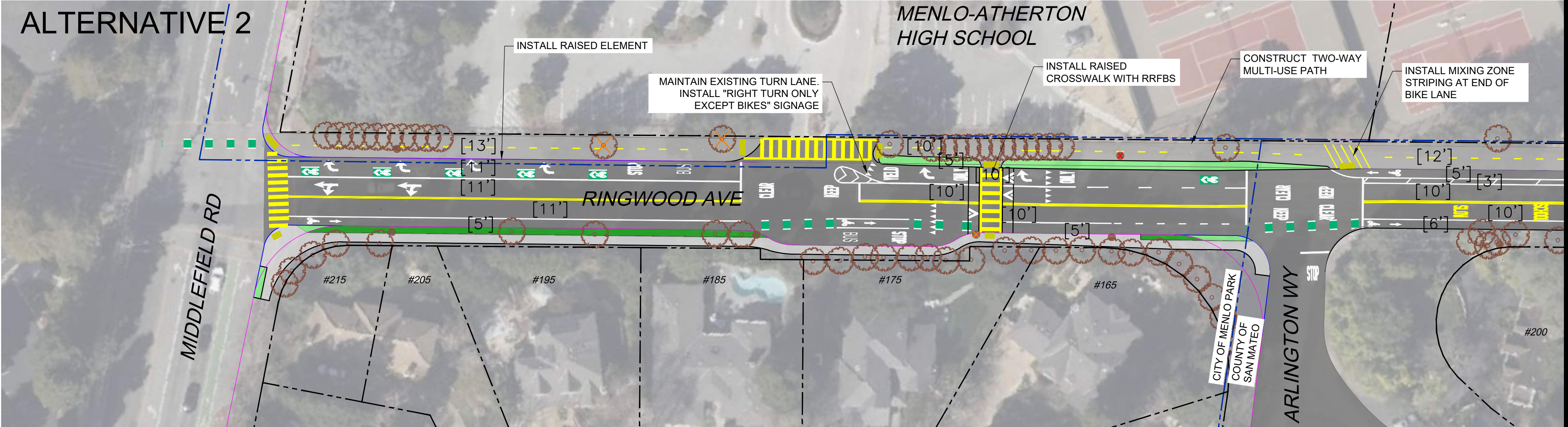
EXISTING CONDITIONS



ALTERNATIVE 1



ALTERNATIVE 2



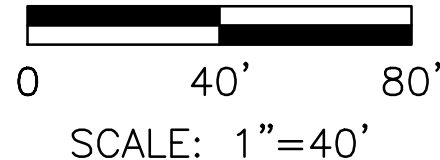
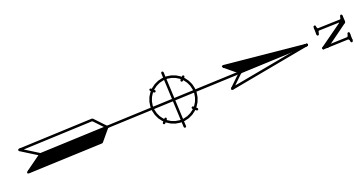
LEGEND:

- ASPHALT ROADWAY
- ASPHALT PATHWAY
- CONCRETE PATHWAY
- EXISTING VEGETATION
- PROPOSED VEGETATION
- EXISTING CURB
- EXISTING EDGE OF TRAVEL WAY
- PROPOSED CURB
- PROPOSED EDGE OF TRAVEL WAY
- PROPOSED RAISED ELEMENT OR BARRIER
- R/W AND PROPERTY LINES
- APPROXIMATE CITY / COUNTY BOUNDARY
- DETECTABLE WARNING SURFACE
- EXISTING TREE OR UTILITY
- TREE OR UTILITY IMPACT
- POTENTIAL TREE OR UTILITY IMPACT

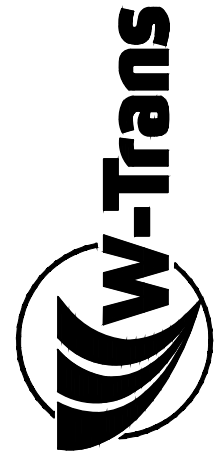


INSET MAP

PRELIMINARY
NOT FOR CONSTRUCTION



**Whitlock & Weinberger
Transportation, Inc.**
490 Mendocino Avenue, Suite 201
Santa Rosa, CA 95401
(707) 542-9500 Fax (707) 542-9590



DRAWN BY
NGB

DESIGNED BY
SJM, CN

CHECKED BY
SMF

DATE

COLEMAN & RINGWOOD AVENUES
TRANSPORTATION STUDY

RINGWOOD AVENUE SHEET 1

10% CONCEPT ALTERNATIVES

SCALE 1"=40'

DATE 9/25/23

JOB NO. SMX900-2

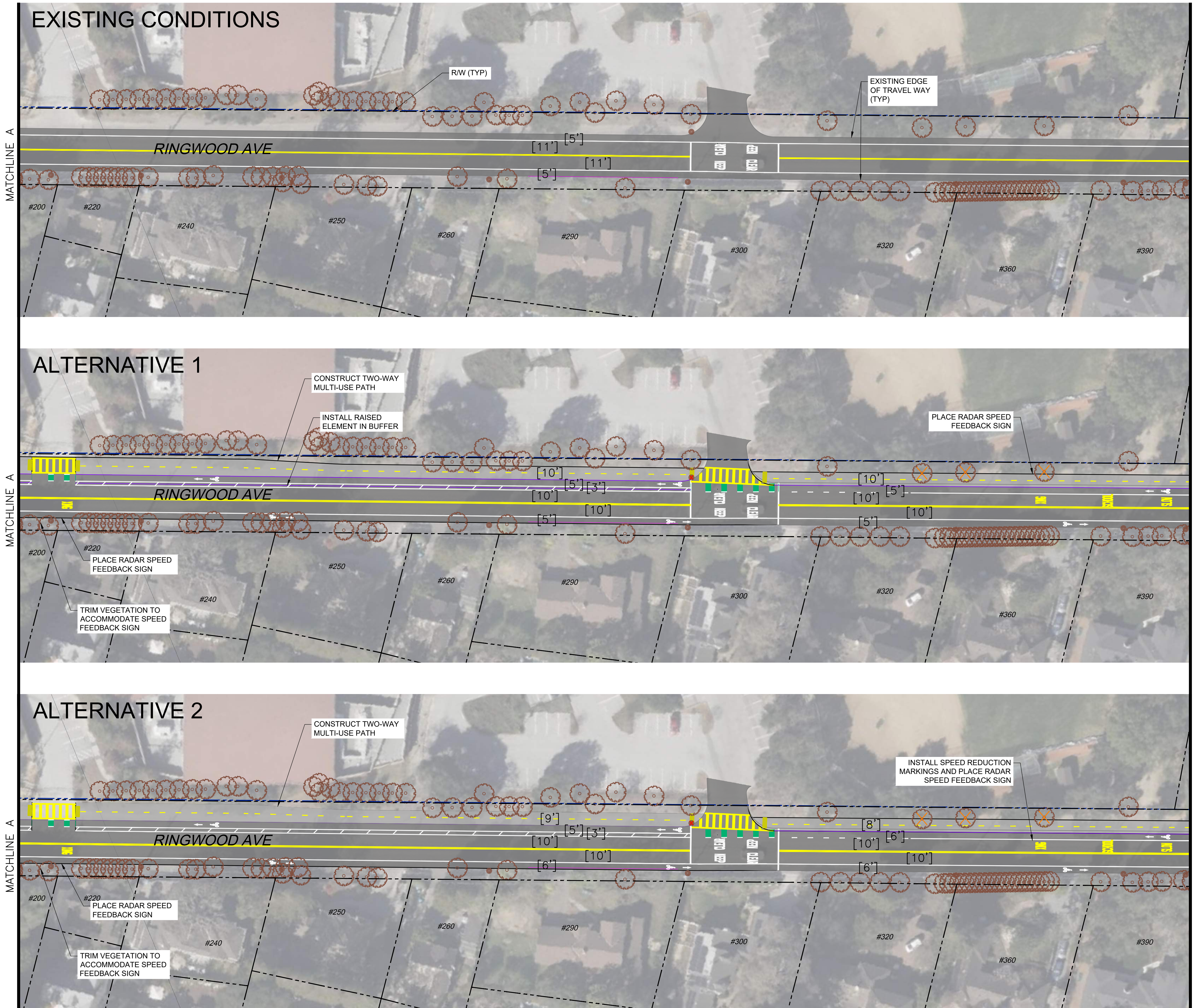
DRAWING NUMBER

1 OF 10

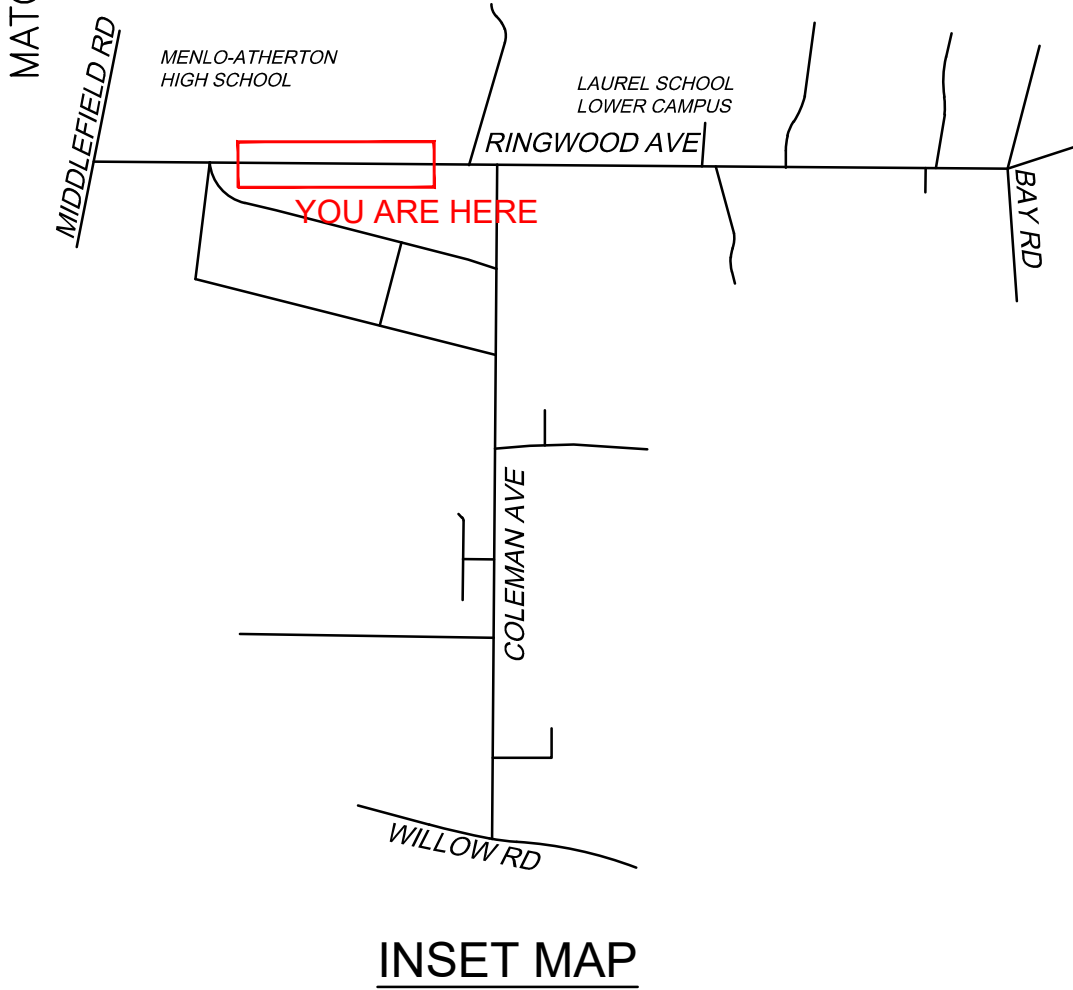
Sep 25, 2023 – 10:07am

N:\AAA\SMX\SMX\SMX900-2 Coleman Avenue Design Alternatives\ACAD\SMX900-2-COMPILED.dwg

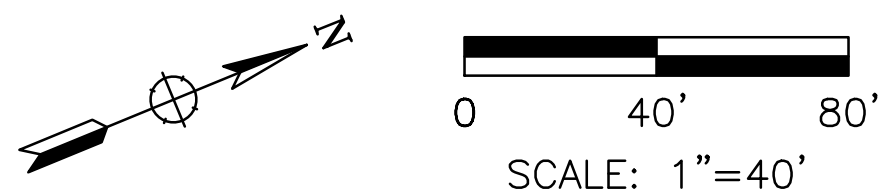
FOR REDUCED PLANS, THE
ORIGINAL SCALE IS IN INCHES



- LEGEND:**
- ASPHALT ROADWAY
 - ASPHALT PATHWAY
 - CONCRETE PATHWAY
 - EXISTING VEGETATION
 - PROPOSED VEGETATION
 - EXISTING CURB
 - EXISTING EDGE OF TRAVEL WAY
 - PROPOSED CURB
 - PROPOSED EDGE OF TRAVEL WAY
 - PROPOSED RAISED ELEMENT OR BARRIER
 - R/W AND PROPERTY LINES
 - APPROXIMATE CITY / COUNTY BOUNDARY
 - DETECTABLE WARNING SURFACE
 - EXISTING TREE OR UTILITY
 - TREE OR UTILITY IMPACT
 - POTENTIAL TREE OR UTILITY IMPACT



**PRELIMINARY
NOT FOR CONSTRUCTION**



**Whitlock & Weinberger
Transportation, Inc.**
490 Mendocino Avenue, Suite 201
Santa Rosa, CA 95401
(707) 542-9500 Fax (707) 542-9590



DRAWN BY
NGB

DESIGNED BY
SJM, CN

CHECKED BY
SMF

DATE

COLEMAN & RINGWOOD AVENUES

TRANSPORTATION STUDY

RINGWOOD AVENUE SHEET 2

10% CONCEPT ALTERNATIVES

SCALE 1"=40'
DATE 9/25/23
JOB NO. SMX900-2
DRAWING NUMBER

Sep 25, 2023 -- 10:08am

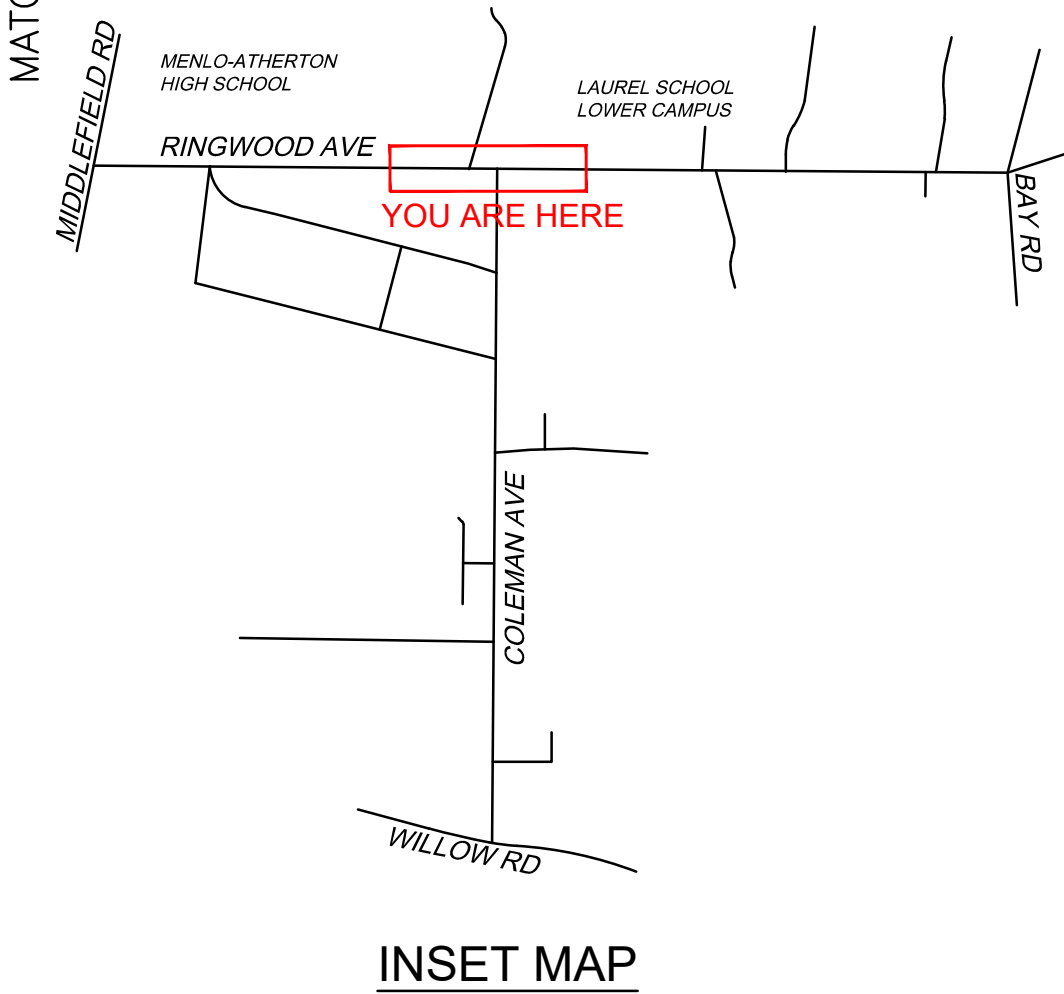
N:\AAA\SMX\SMX\SMX900-2 Coleman Avenue Design Alternatives\ACAD\SMX900-2-COMPILED.dwg

FOR REDUCED PLANS, THE
ORIGINAL SCALE IS IN INCHES

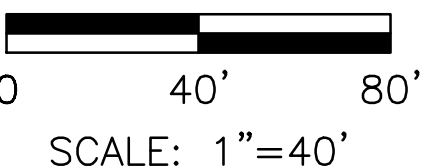
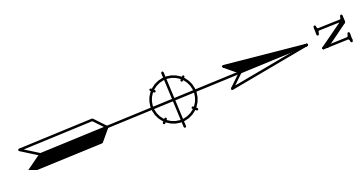


LEGEND:

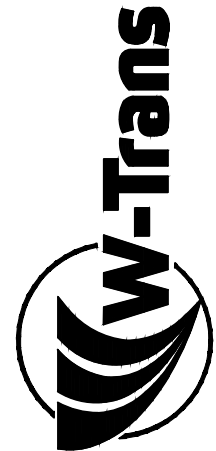
- ASPHALT ROADWAY
- ASPHALT PATHWAY
- CONCRETE PATHWAY
- EXISTING VEGETATION
- PROPOSED VEGETATION
- EXISTING CURB
- EXISTING EDGE OF TRAVEL WAY
- PROPOSED CURB
- PROPOSED EDGE OF TRAVEL WAY
- PROPOSED RAISED ELEMENT OR BARRIER
- R/W AND PROPERTY LINES
- APPROXIMATE CITY / COUNTY BOUNDARY
- DETECTABLE WARNING SURFACE
- EXISTING TREE OR UTILITY
- TREE OR UTILITY IMPACT
- POTENTIAL TREE OR UTILITY IMPACT



PRELIMINARY
NOT FOR CONSTRUCTION



Whitlock & Weinberger
Transportation, Inc.
490 Mendocino Avenue, Suite 201
Santa Rosa, CA 95401
(707) 542-9500 Fax (707) 542-9590



DRAWN BY
NGB

DESIGNED BY
SJM, CN

CHECKED BY
SMF

DATE

COLEMAN & RINGWOOD AVENUES
TRANSPORTATION STUDY

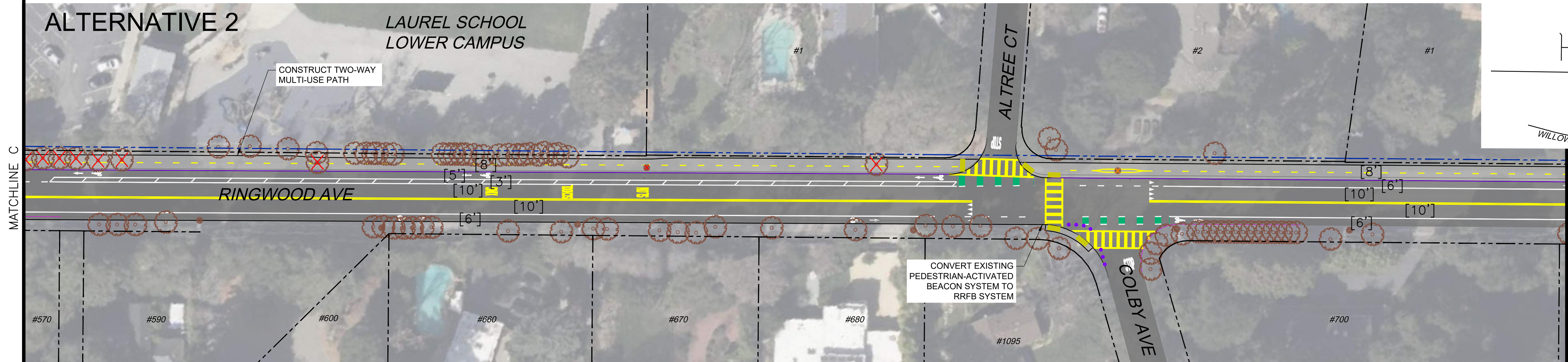
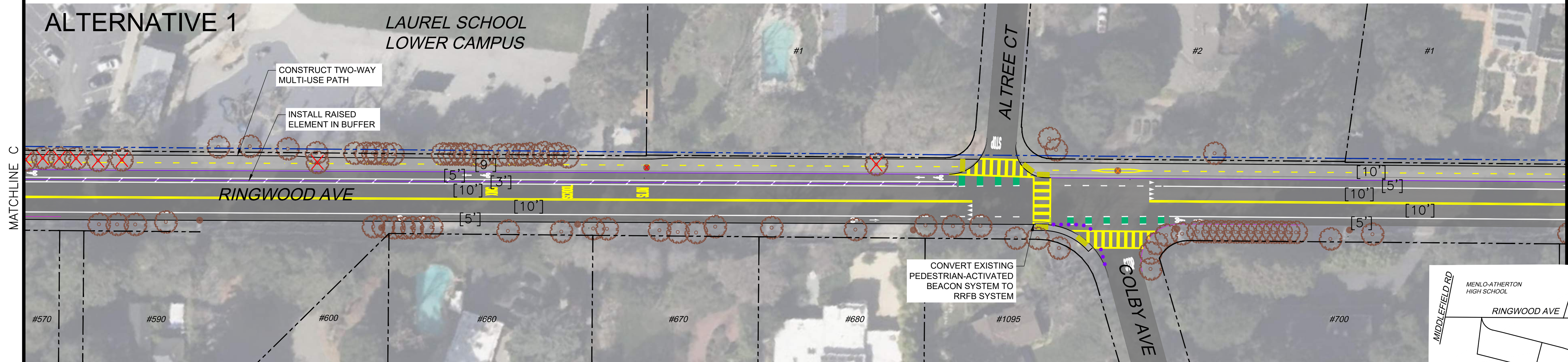
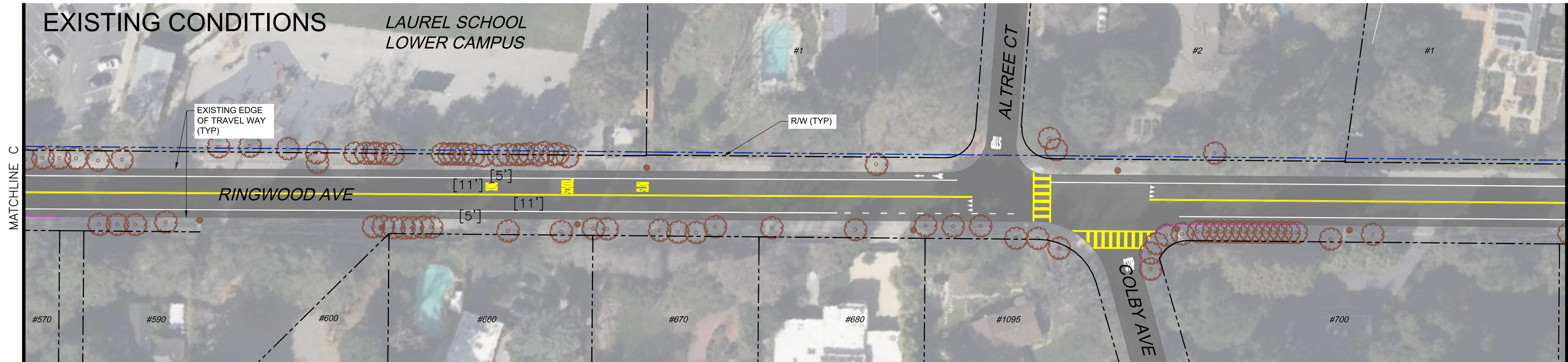
RINGWOOD AVENUE SHEET 3
10% CONCEPT ALTERNATIVES

SCALE 1"=40'
DATE 9/25/23
JOB NO. SMX900-2
DRAWING NUMBER

Sep 25, 2023 -- 10:08am

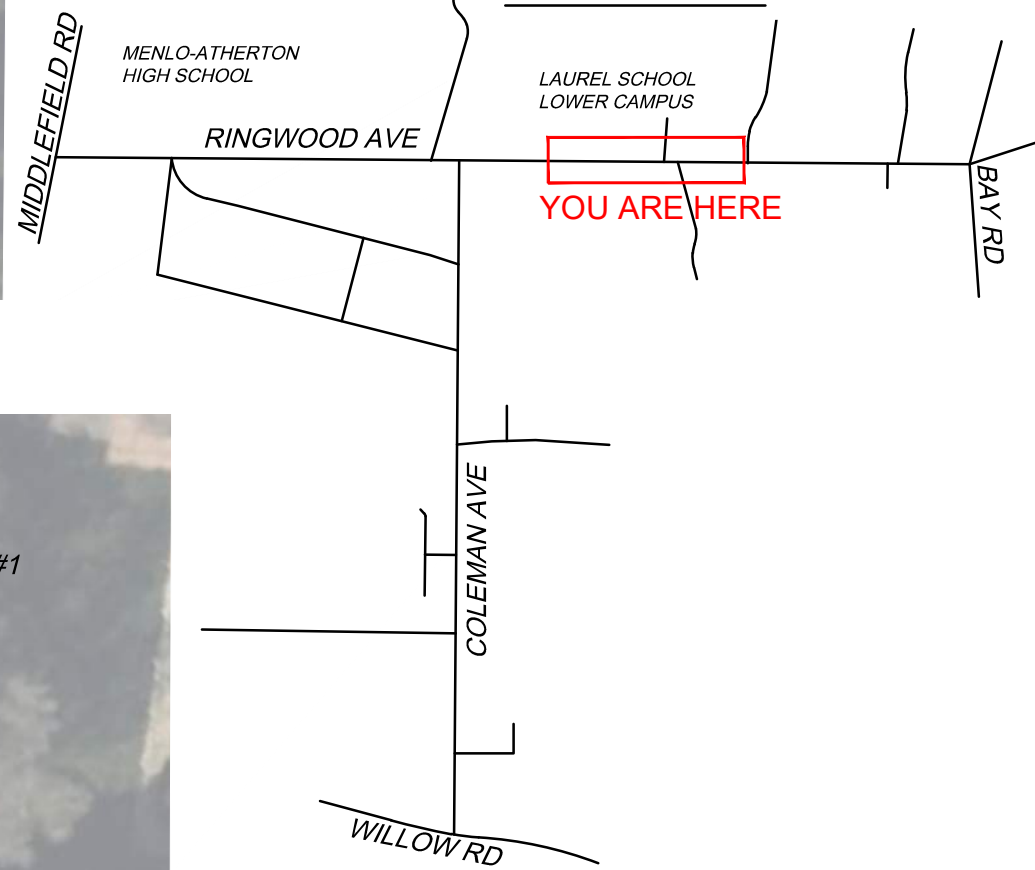
N:\AAA\SMX\SMX\SMX900-2 Coleman Avenue Design Alternatives\ACAD\SMX900-2-COMPILED.dwg

FOR REDUCED PLANS, THE
ORIGINAL SCALE IS IN INCHES

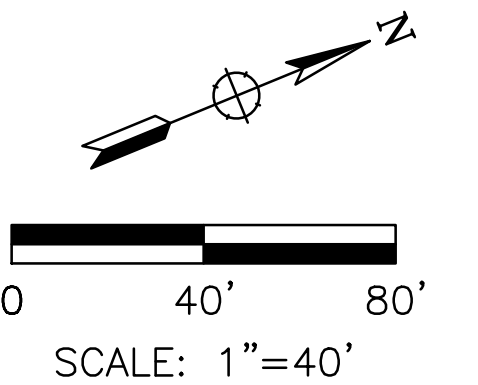


- LEGEND:**
- ASPHALT ROADWAY
 - ASPHALT PATHWAY
 - CONCRETE PATHWAY
 - EXISTING VEGETATION
 - PROPOSED VEGETATION
 - EXISTING CURB
 - EXISTING EDGE OF TRAVEL WAY
 - PROPOSED CURB
 - PROPOSED EDGE OF TRAVEL WAY
 - PROPOSED RAISED ELEMENT OR BARRIER
 - R/W AND PROPERTY LINES
 - APPROXIMATE CITY / COUNTY BOUNDARY
 - DETECTABLE WARNING SURFACE
 - EXISTING TREE OR UTILITY
 - TREE OR UTILITY IMPACT
 - POTENTIAL TREE OR UTILITY IMPACT

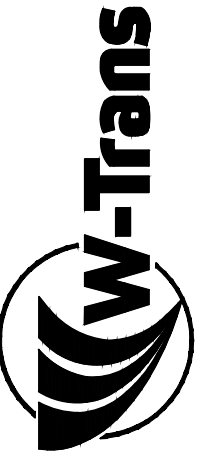
INSET MAP



**PRELIMINARY
NOT FOR CONSTRUCTION**



**Whitlock & Weinberger
Transportation, Inc.**
490 Mendocino Avenue, Suite 201
Santa Rosa, CA 95401
(707) 542-9500 Fax (707) 542-9590



DRAWN BY
NGB

DESIGNED BY
SJM, CN

CHECKED BY
SMF

DATE

COLEMAN & RINGWOOD AVENUES

TRANSPORTATION STUDY

RINGWOOD AVENUE SHEET 4

10% CONCEPT ALTERNATIVES

SCALE 1"=40'
DATE 9/25/23
JOB NO. SMX900-2
DRAWING NUMBER

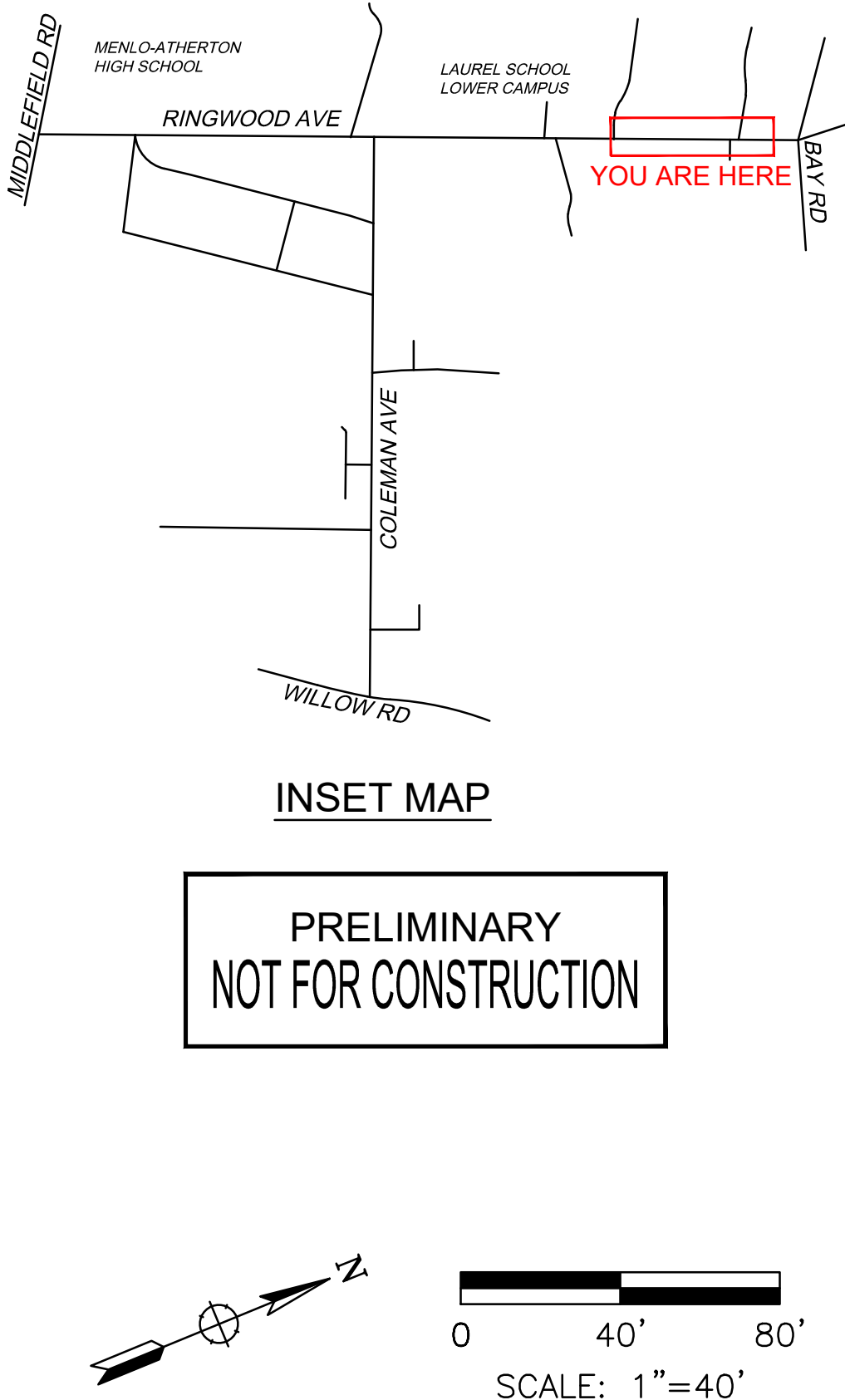
Sep 25, 2023 -- 10:09am

N:\AAA\SMX\SMX\SMX900-2 Coleman Avenue Design Alternatives\ACAD\SMX900-2-COMPILED.dwg

FOR REDUCED PLANS, THE
ORIGINAL SCALE IS IN INCHES



- LEGEND:**
- ASPHALT ROADWAY
 - ASPHALT PATHWAY
 - CONCRETE PATHWAY
 - EXISTING VEGETATION
 - PROPOSED VEGETATION
 - EXISTING CURB
 - EXISTING EDGE OF TRAVEL WAY
 - PROPOSED CURB
 - PROPOSED EDGE OF TRAVEL WAY
 - PROPOSED RAISED ELEMENT OR BARRIER
 - R/W AND PROPERTY LINES
 - APPROXIMATE CITY / COUNTY BOUNDARY
 - DETECTABLE WARNING SURFACE
 - EXISTING TREE OR UTILITY
 - TREE OR UTILITY IMPACT
 - POTENTIAL TREE OR UTILITY IMPACT

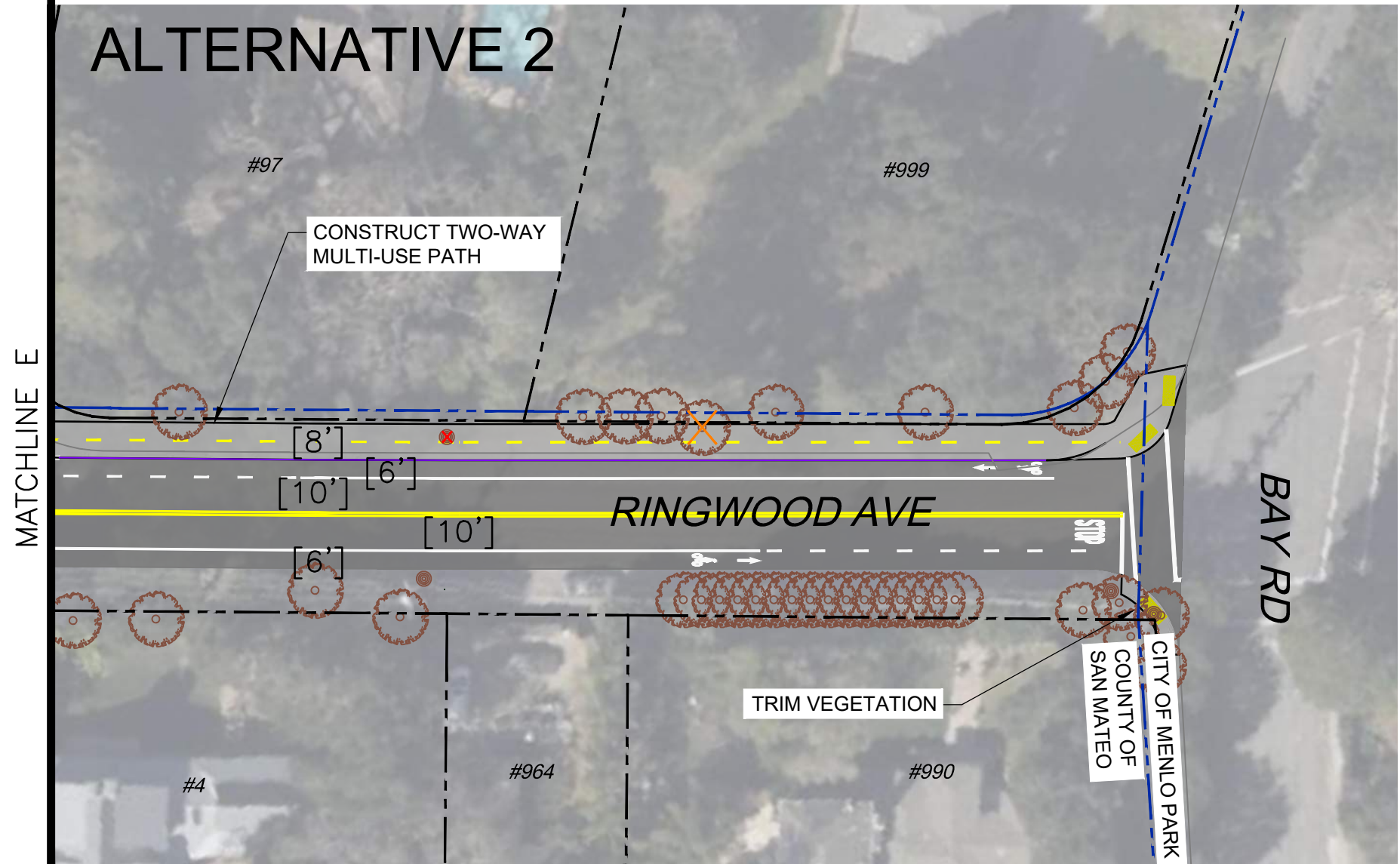
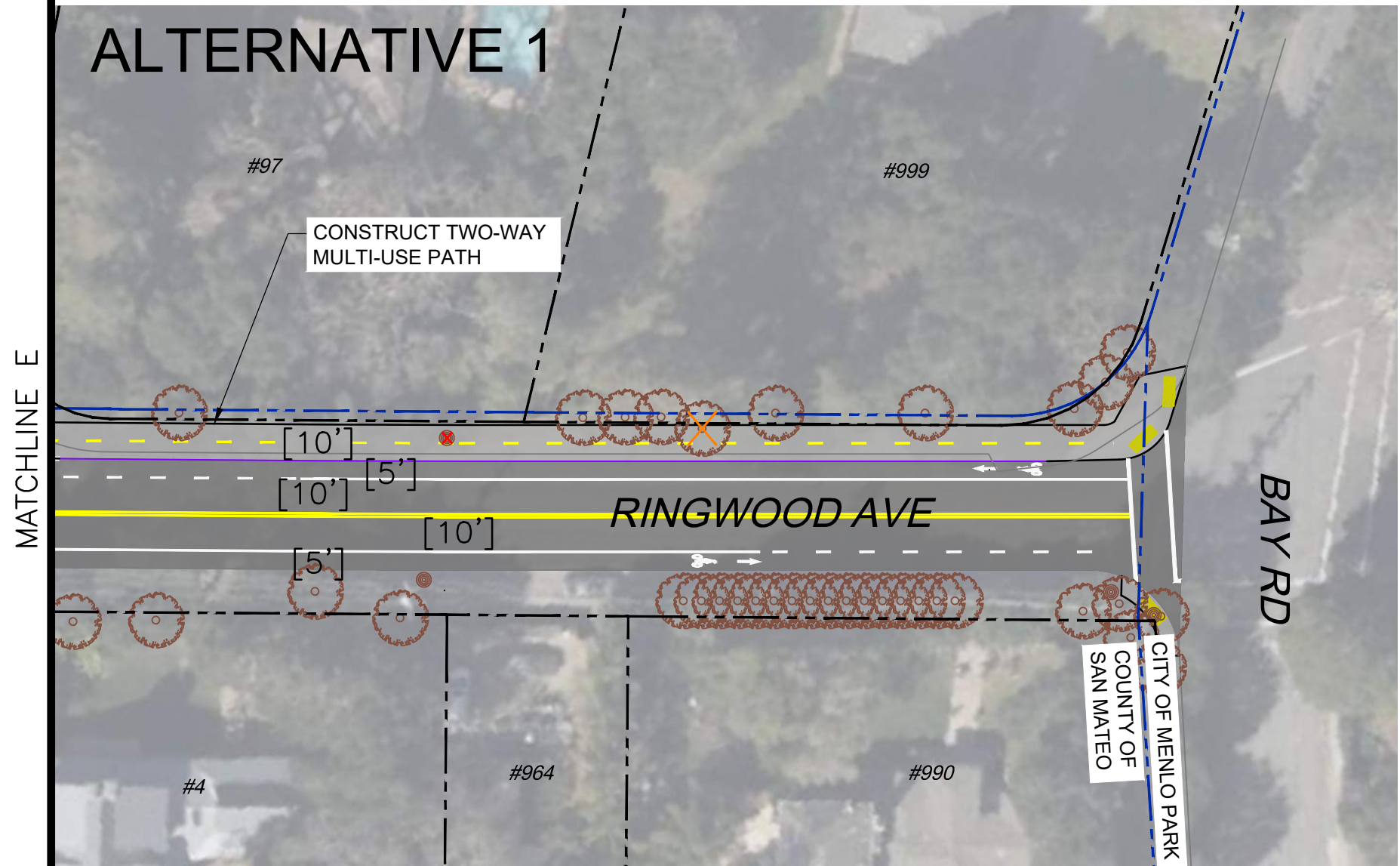
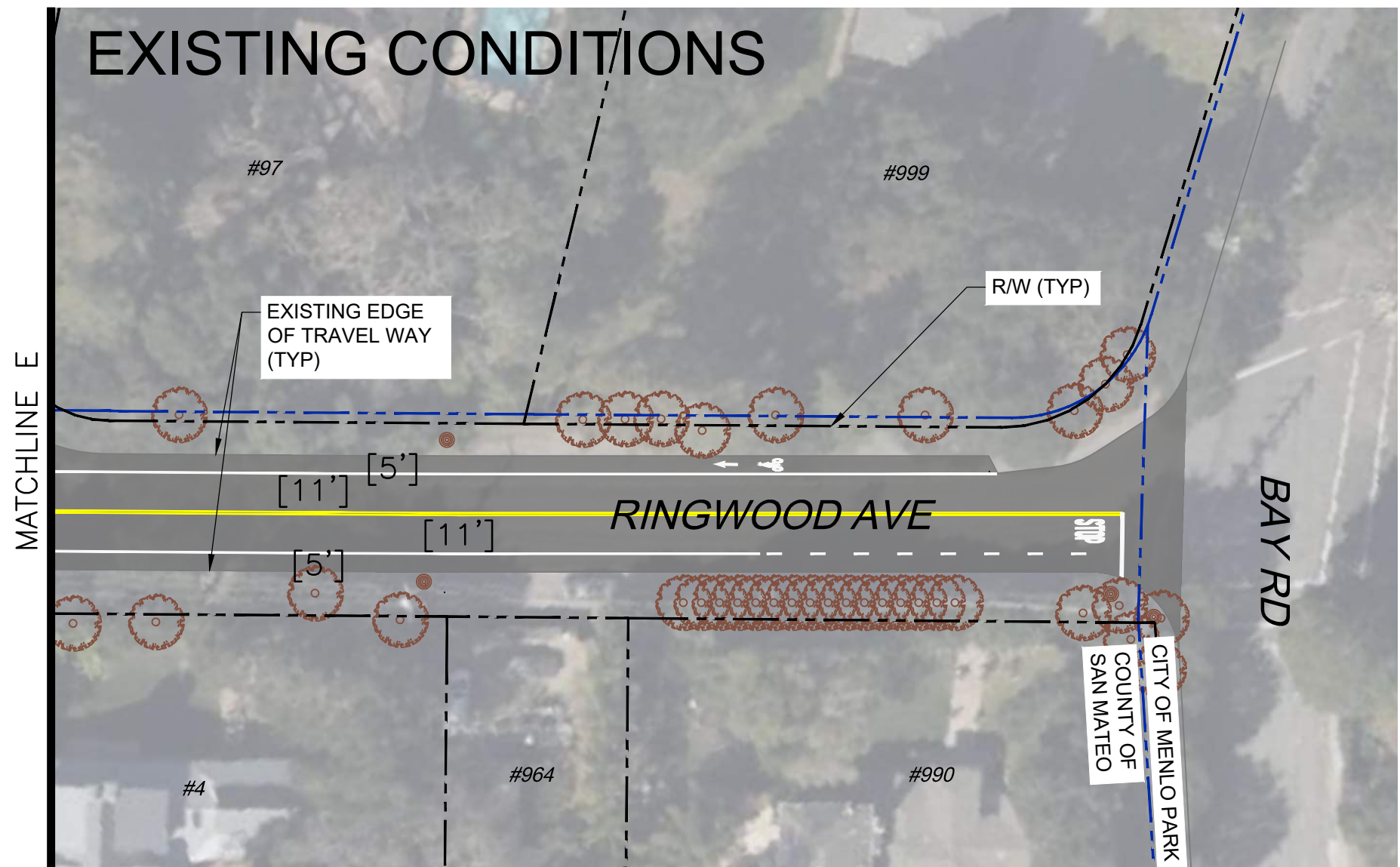


Whitlock & Weinberger Transportation, Inc. 490 Mendocino Avenue, Suite 201 Santa Rosa, CA 95401 (707) 542-9500 Fax (707) 542-9590	
DRAWN BY NGB	DATE
DESIGNED BY SJM, CN	
CHECKED BY SMF	
COLEMAN & RINGWOOD AVENUES TRANSPORTATION STUDY	
RINGWOOD AVENUE SHEET 5 10% CONCEPT ALTERNATIVES	
SCALE 1"=40'	
DATE 9/25/23	
JOB NO. SMX900-2	
DRAWING NUMBER	
5	OF 10

Sep 25, 2023 – 10:09am

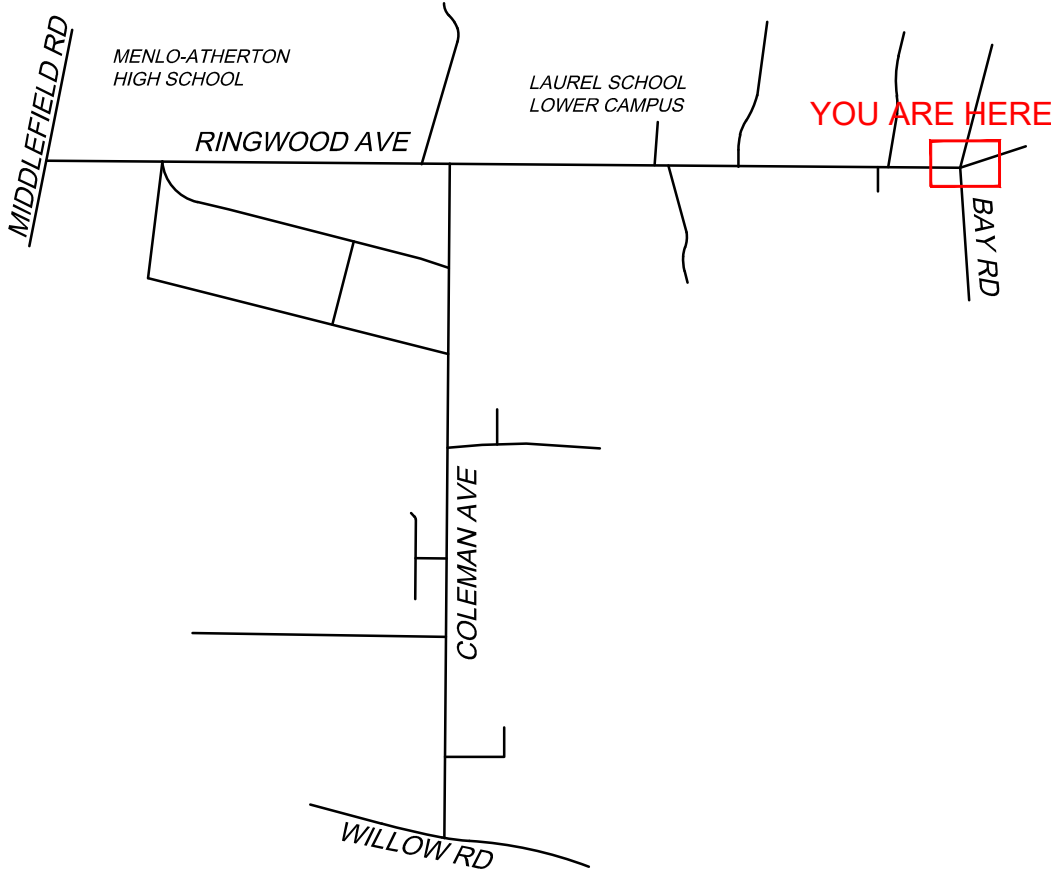
N:\AAA\SMX\SMX\SMX900-2 Coleman Avenue Design Alternatives\ACAD\SMX900-2-COMPILED.dwg

FOR REDUCED PLANS, THE
ORIGINAL SCALE IS IN INCHES



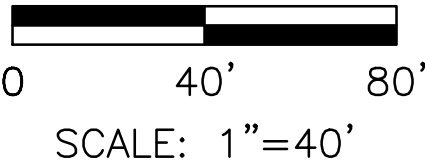
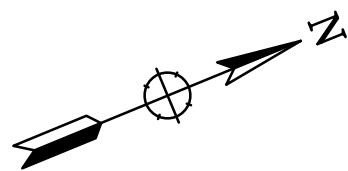
LEGEND:

- ASPHALT ROADWAY
- ASPHALT PATHWAY
- CONCRETE PATHWAY
- EXISTING VEGETATION
- PROPOSED VEGETATION
- EXISTING CURB
- EXISTING EDGE OF TRAVEL WAY
- PROPOSED CURB
- PROPOSED EDGE OF TRAVEL WAY
- PROPOSED RAISED ELEMENT OR BARRIER
- R/W AND PROPERTY LINES
- APPROXIMATE CITY / COUNTY BOUNDARY
- DETECTABLE WARNING SURFACE
- EXISTING TREE OR UTILITY
- TREE OR UTILITY IMPACT
- POTENTIAL TREE OR UTILITY IMPACT



INSET MAP

PRELIMINARY
NOT FOR CONSTRUCTION



Whitlock & Weinberger Transportation, Inc. 490 Mendocino Avenue, Suite 201 Santa Rosa, CA 95401 (707) 542-9500 Fax (707) 542-9590	
DESIGNED BY SJM, CN	DRAWN BY NGB
CHECKED BY SMF	DATE
COLEMAN & RINGWOOD AVENUES TRANSPORTATION STUDY	
RINGWOOD AVENUE SHEET 6 10% CONCEPT ALTERNATIVES	
SCALE 1"=40'	
DATE 9/25/23	
JOB NO. SMX900-2	
DRAWING NUMBER	
6 OF 10	