

Coleman and Ringwood Avenues Transportation Study

Community Webinar
December 7, 2023



OFFICE OF
SUSTAINABILITY

COUNTY OF SAN MATEO



CITY OF
MENLO PARK

PRESENTATION OVERVIEW

- Webinar Goals
- Summary of Fall 2023 Engagement
- Pilot Project Overview
- Potential Pilot Options
- Breakout Room Discussion
- Polling Exercise
- Next Steps

WEBINAR GOALS

Provide an Opportunity for Community Members to:

- Learn about new potential pilot options for Coleman Avenue only
- Ask questions
- Share comments and feedback
- Learn about next steps in the Study

FALL 2023 ENGAGEMENT SUMMARY

Demonstration Event on Coleman Avenue



Open House at MAHS



Coleman Avenue Takeaways

- General consensus for traffic calming
- Support for improved pedestrian/ bicycle safety and access, but varying ideas on how to achieve it
- Some concern with tree removal and pavement widening
- Interest in reducing traffic volumes

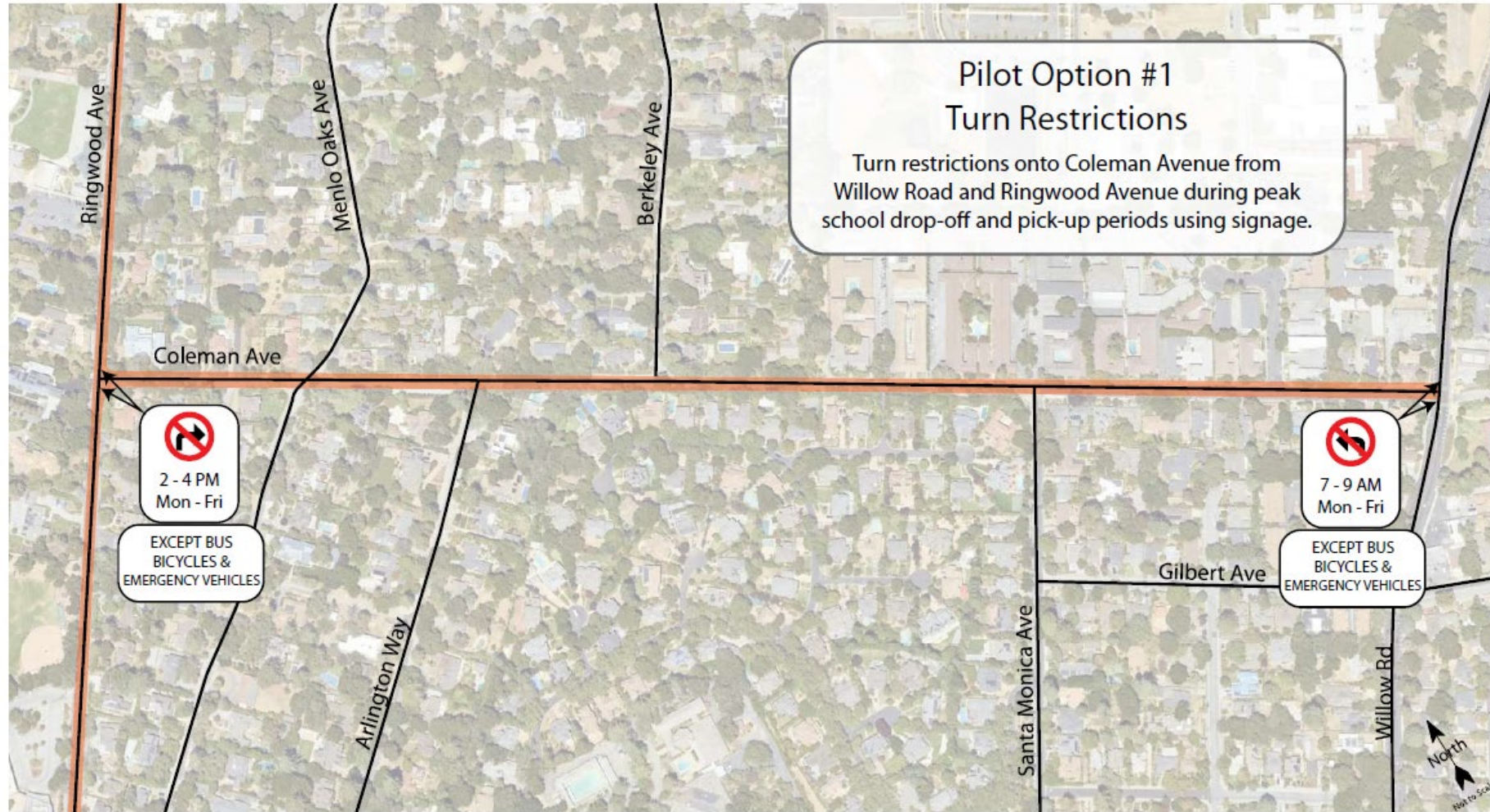
A PILOT PROJECT WOULD...

- be a temporary trial to evaluate changes and understand full extent of impacts prior to making permanent changes
- use less costly materials
- not preclude future implementation of one of the design alternatives or other enhancements
- be conducted after and separately from this Study



**What Is
A Pilot
Program?**

PILOT OPTION 1 – TURN RESTRICTIONS



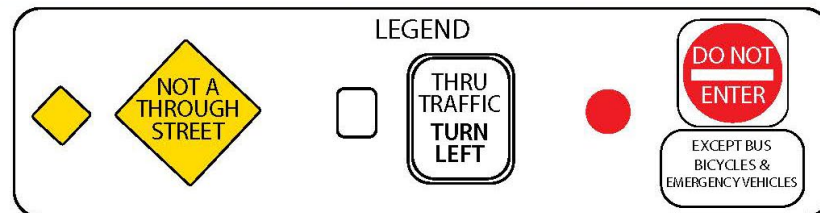
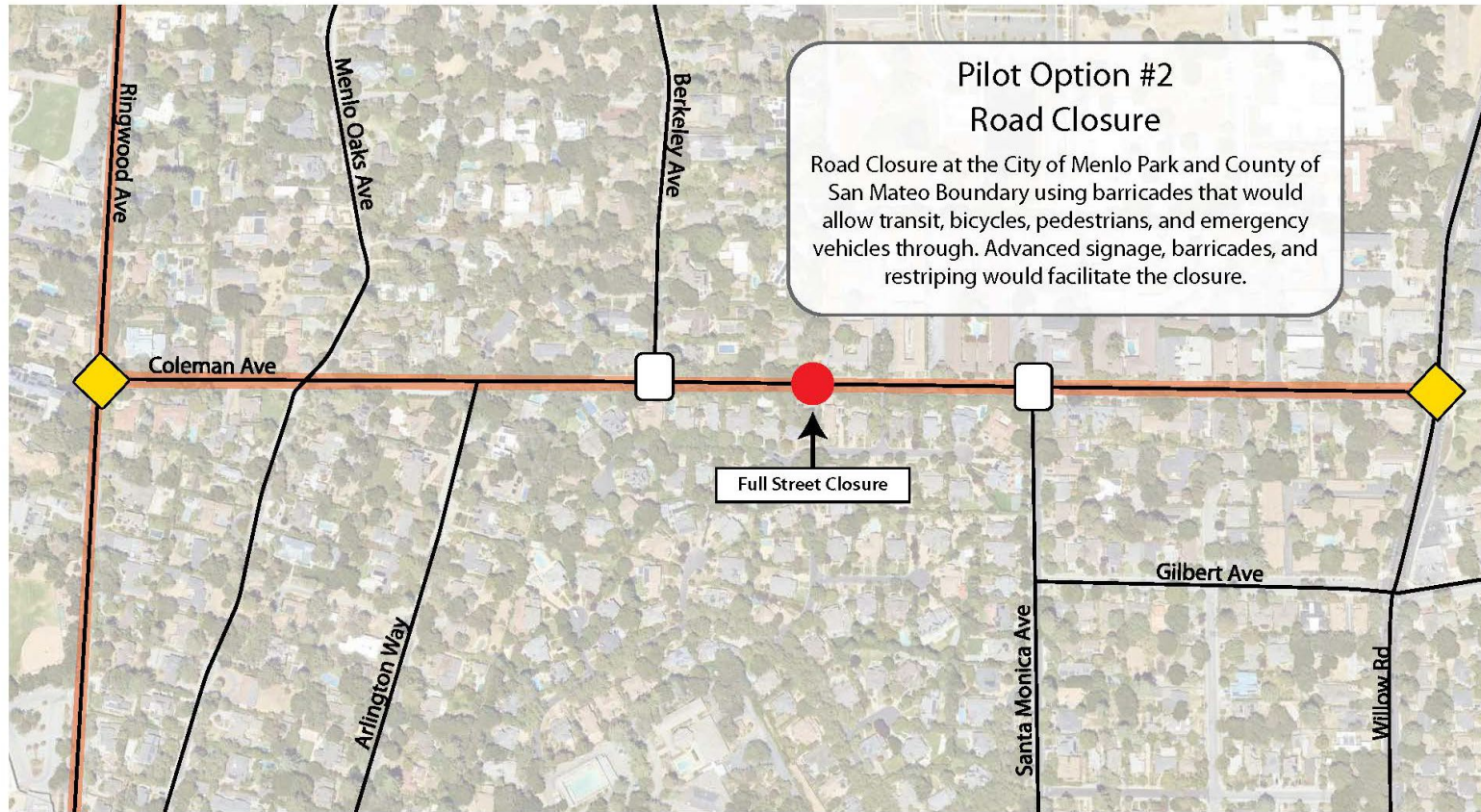
Opportunities

- Potential vehicle volume reduction on Coleman Avenue during certain periods only
- No tree removal or pavement widening

Challenges

- Some traffic will be diverted to adjacent streets
- The amount and frequency of enforcement of the turn restrictions may depend on available law enforcement resources.

PILOT OPTION 2 – FULL STREET CLOSURE



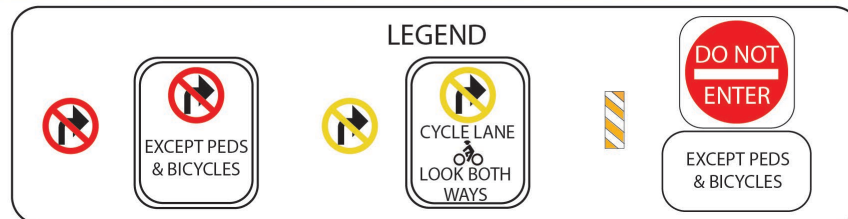
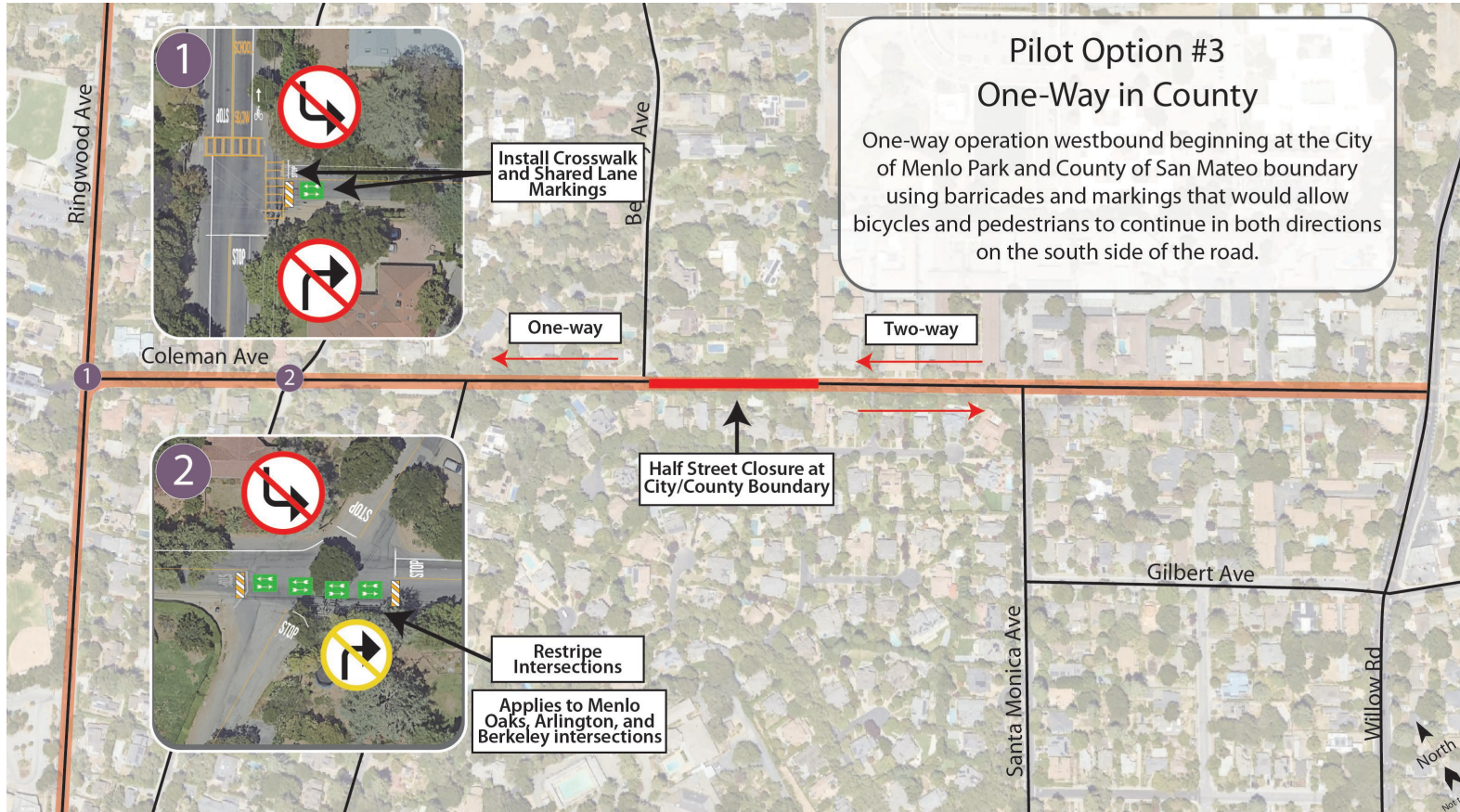
Opportunities

- Substantial vehicle volume reduction on Coleman Avenue
- Lower vehicle volumes makes shared ped/bike options more comfortable
- No tree removal or pavement widening
- Less enforcement required

Challenges

- Substantial traffic diversion to adjacent streets
- More circuitous driving paths
- Accommodating transit through closure

PILOT OPTION 3 – ONE WAY IN COUNTY



Opportunities

- Traffic volume eliminated eastbound (in County)
- More space for dedicated ped/bike facilities (County)
- Reduction in conflict points
- No tree removal or pavement widening



Challenges

- Some traffic diversion to adjacent streets
- Different circulation/facilities in City and County
- More circuitous driving paths
- Re-routing of transit
- Visual impact of additional signs and barricades

PILOT OPTION 4 – TRAFFIC CALMING



LEGEND

-  Rubber Speed Hump Location
-  Existing Traffic Circles

Opportunities

- Vehicle speed reduction
- No tree removal or pavement widening
- Consistent circulation throughout City and County
- Can be implemented with other pilot options

Challenges

- Does not create dedicated space for peds/bikes
- Minimal vehicle volume diversion makes shared use facilities less comfortable

BREAKOUT ROOM ACTIVITY



OFFICE OF
SUSTAINABILITY

COUNTY OF SAN MATEO



CITY OF
MENLO PARK

CONVERSATION GUIDELINES

- Speak from your own experience
- Listen to each other
- Respect differences; be curious
- Allow everyone to participate
- Your questions are valuable!

COMPARISON OF PILOT OPTIONS

Breakout Room Activity

Please fill out the table
using:

HIGH

MEDIUM

LOW

*Note: All options could
be implemented without
any tree removal or
pavement widening

Pilot Option	Collision Reduction	Speed Reduction	Traffic Volume Reduction	Improved Bike and Pedestrian Comfort
1 – Turn Restrictions				
2 – Full Street Closure				
3 – One Way in County				
4 – Traffic Calming Only				

GROUP RECAP

Please summarize your breakout room's discussion and findings. What did your group agree or disagree on?

Pilot Options

- 1 – Turn Restrictions
- 2 – Full Street Closure
- 3 – One-way in County
- 4 – Traffic Calming Only

Objectives

- Collision Reduction
- Speed Reduction
- Traffic Volume Reduction
- Improved Bike and Pedestrian Comfort

POLLING ACTIVITY



OFFICE OF
SUSTAINABILITY

COUNTY OF SAN MATEO



CITY OF
MENLO PARK

POLL QUESTION 1



1. How are you connected to Coleman Ave? Check all that apply.

ⓘ Start presenting to display the poll results on this slide.

POLL QUESTION 2



**2. In one or two words, what do you most want to see on Coleman Ave?
(For example: “slower speeds” or “bike lanes”)**

① Start presenting to display the poll results on this slide.

POLL QUESTION 3



3. Which, if any, of the pilot programs do you think best achieves the objectives of the project (to improve mobility for active modes of transportation and safety for all roadway users)?

① Start presenting to display the poll results on this slide.

NEXT STEPS

- **December 2023** – Community Survey #3
- **January 2024** – Analyze Survey Results for Pilot Options and Prepare Draft Study
- **February 2024** – Present Draft Study to County BPAC and Menlo Park CSC
- **March 2024** – Present to Board and Council

COMMUNITY SURVEY #3

smcoos.org/ColemanSurvey



Survey will remain open through Friday, 12/22



OFFICE OF
SUSTAINABILITY

COUNTY OF SAN MATEO

THANK YOU FOR
YOUR ATTENDANCE
AND PARTICIPATION!



CITY OF
MENLO PARK