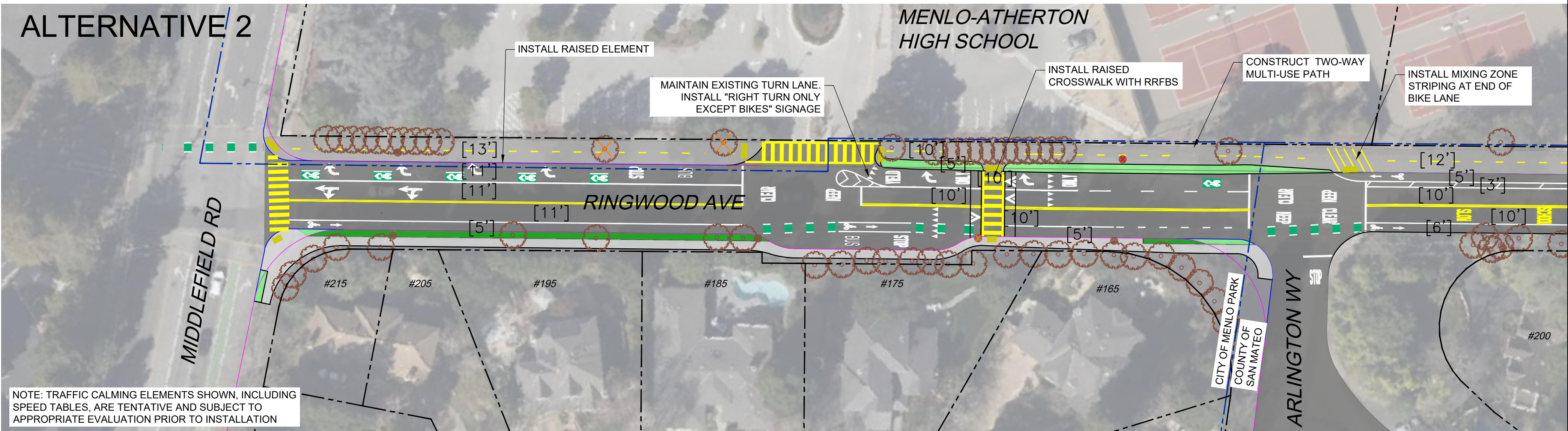
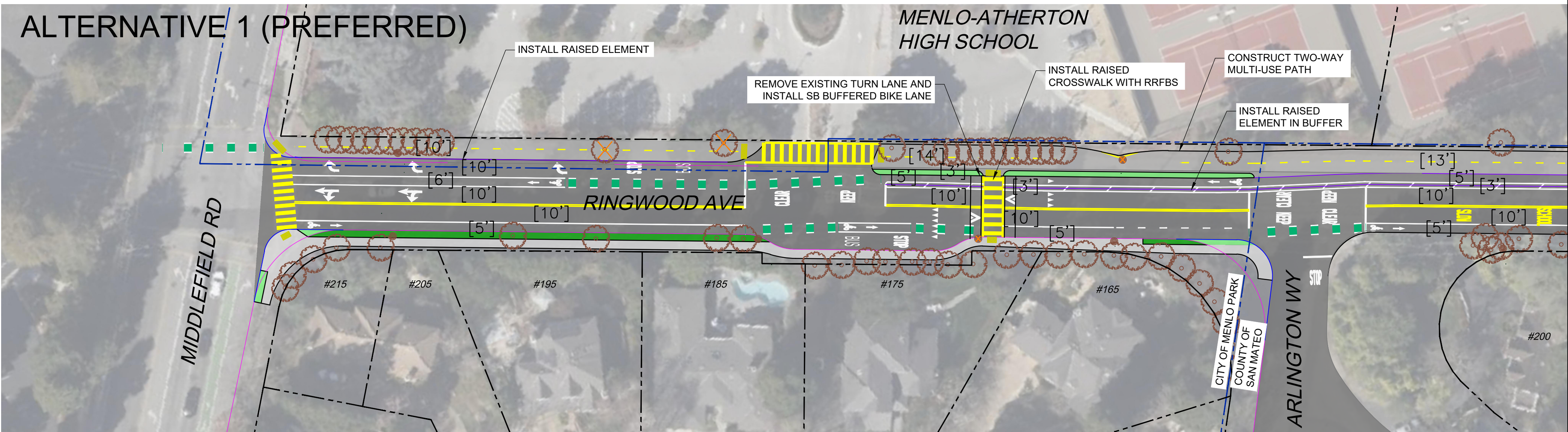
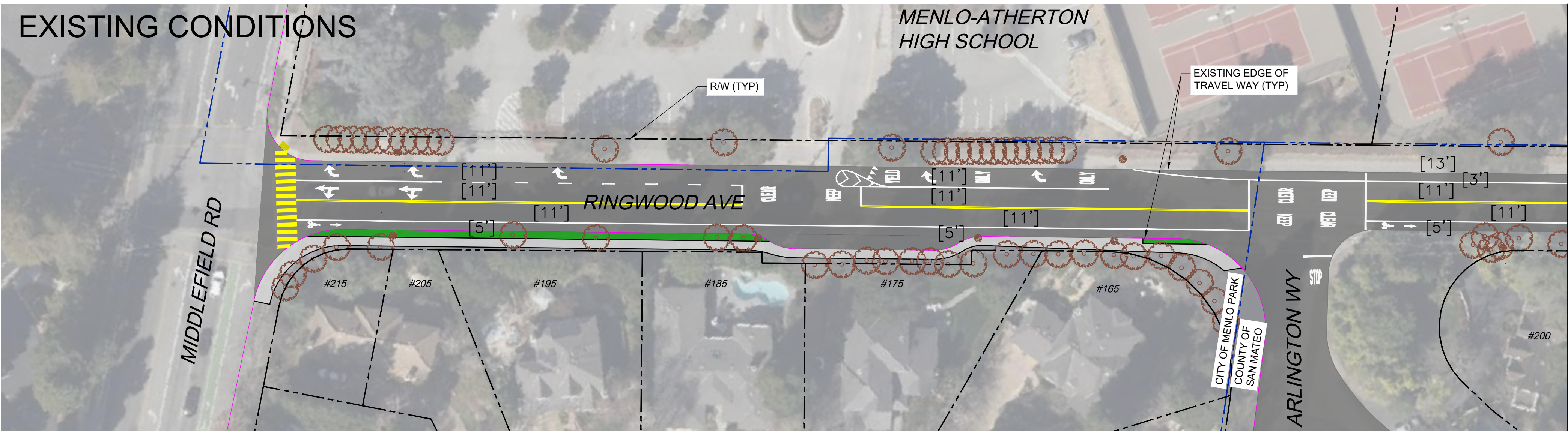


Feb 09, 2024 — 3:50pm

C:\Users\nbrunetto\appdata\local\temp\AcPublish\_17892\SMX900-2-COMPILED.dwg

FOR REDUCED PLANS, THE  
ORIGINAL SCALE IS IN INCHES



NOTE: TRAFFIC CALMING ELEMENTS SHOWN, INCLUDING SPEED TABLES, ARE TENTATIVE AND SUBJECT TO APPROPRIATE EVALUATION PRIOR TO INSTALLATION

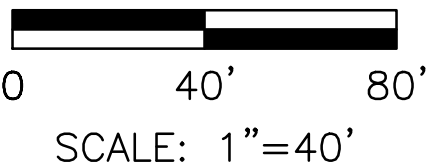
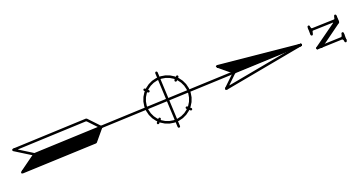
LEGEND:

- ASPHALT ROADWAY
- ASPHALT PATHWAY
- CONCRETE PATHWAY
- EXISTING VEGETATION
- PROPOSED VEGETATION
- EXISTING CURB
- EXISTING EDGE OF TRAVEL WAY
- PROPOSED CURB
- PROPOSED EDGE OF TRAVEL WAY
- PROPOSED RAISED ELEMENT OR BARRIER
- R/W AND PROPERTY LINES
- APPROXIMATE CITY / COUNTY BOUNDARY
- DETECTABLE WARNING SURFACE
- EXISTING TREE OR UTILITY
- TREE OR UTILITY IMPACT
- POTENTIAL TREE OR UTILITY IMPACT



INSET MAP

PRELIMINARY  
NOT FOR CONSTRUCTION



**Whitlock & Weinberger  
Transportation, Inc.**  
490 Mendocino Avenue, Suite 201  
Santa Rosa, CA 95401  
(707) 542-9500 Fax (707) 542-9590



DRAWN BY  
NGB

DESIGNED BY  
SJM, CN

CHECKED BY  
SMF

DATE

COLEMAN & RINGWOOD AVENUES  
TRANSPORTATION STUDY

RINGWOOD AVENUE SHEET 1  
10% CONCEPT ALTERNATIVES

SCALE 1"=40'

DATE 2/9/24

JOB NO.  
SMX900-2  
DRAWING NUMBER

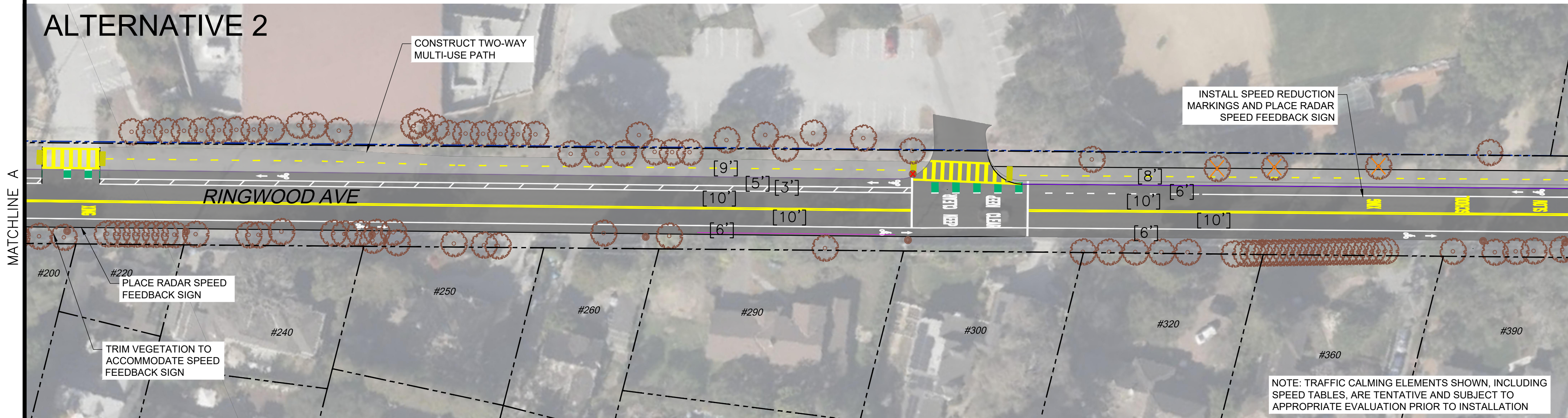
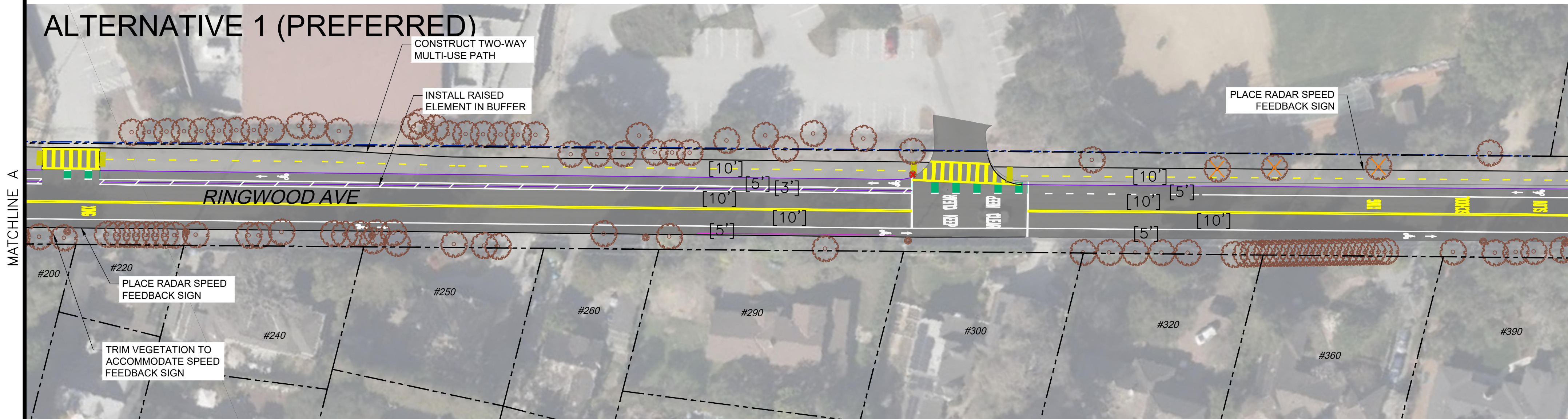
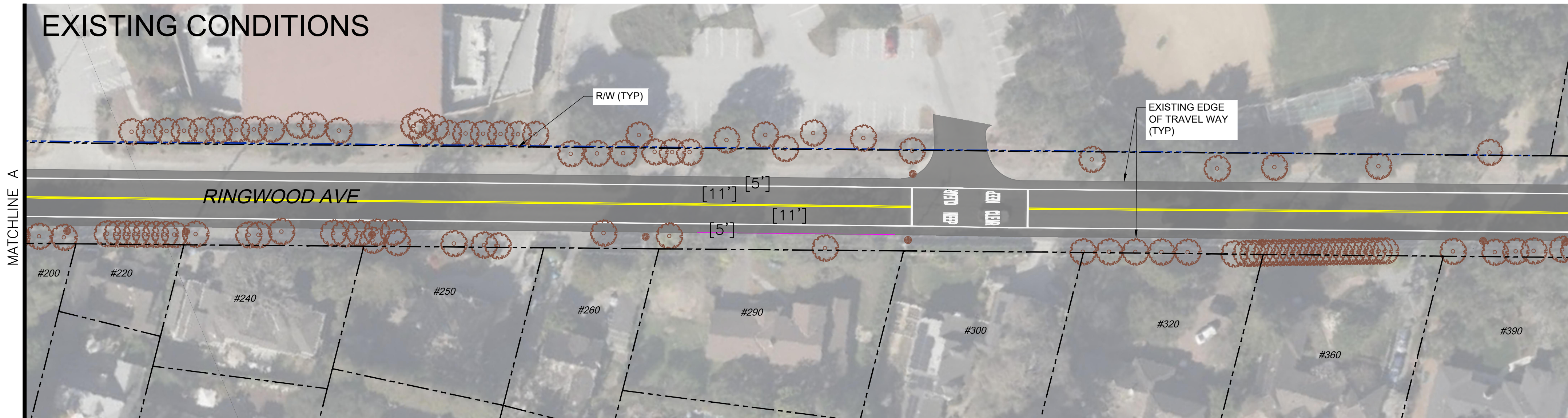
1 OF 10



Feb 09, 2024 — 3:51pm

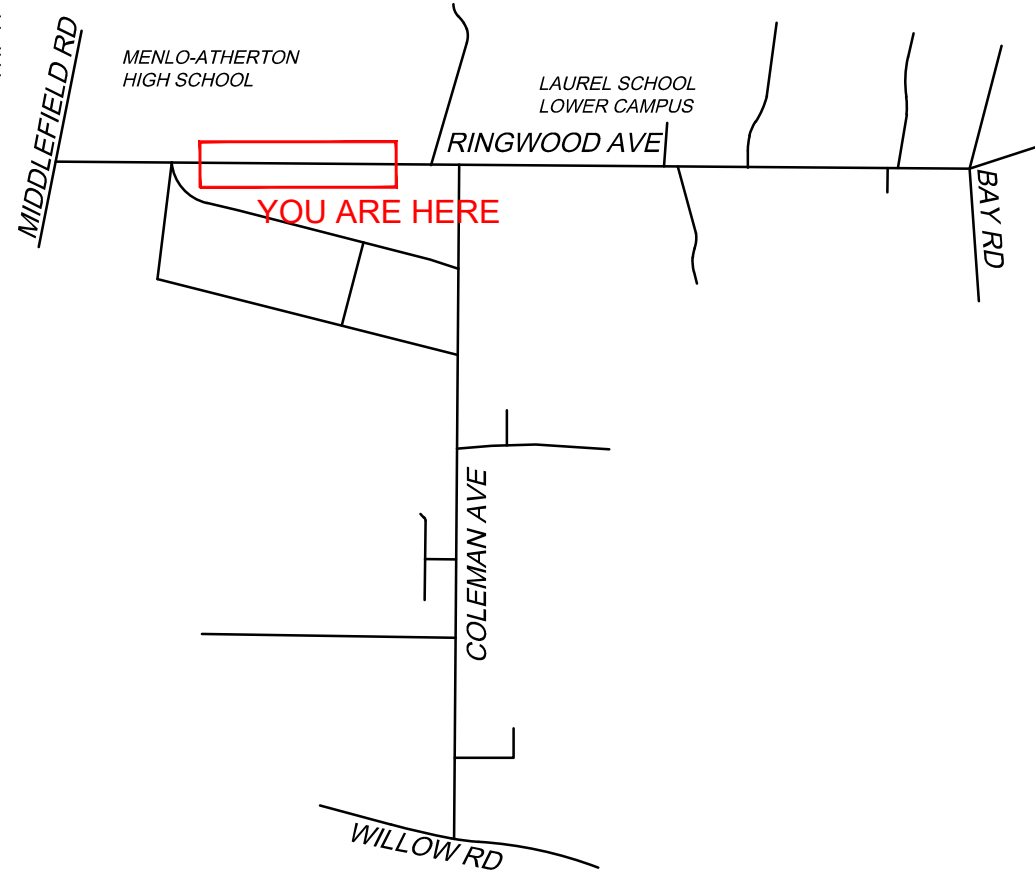
C:\Users\nbrunetto\appdata\local\temp\AcPublish\_17892\SMX900-2-COMPILED.dwg

FOR REDUCED PLANS, THE  
ORIGINAL SCALE IS IN INCHES



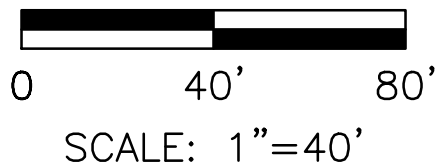
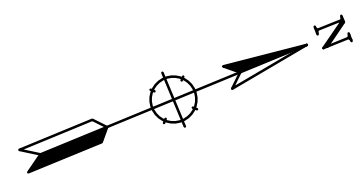
#### LEGEND:

- ASPHALT ROADWAY
- ASPHALT PATHWAY
- CONCRETE PATHWAY
- EXISTING VEGETATION
- PROPOSED VEGETATION
- EXISTING CURB
- EXISTING EDGE OF TRAVEL WAY
- PROPOSED CURB
- PROPOSED EDGE OF TRAVEL WAY
- PROPOSED RAISED ELEMENT OR BARRIER
- R/W AND PROPERTY LINES
- APPROXIMATE CITY / COUNTY BOUNDARY
- DETECTABLE WARNING SURFACE
- EXISTING TREE OR UTILITY
- TREE OR UTILITY IMPACT
- POTENTIAL TREE OR UTILITY IMPACT



#### INSET MAP

PRELIMINARY  
NOT FOR CONSTRUCTION



**Whitlock & Weinberger  
Transportation, Inc.**  
490 Mendocino Avenue, Suite 201  
Santa Rosa, CA 95401  
(707) 542-9500 Fax (707) 542-9590



DRAWN BY  
NGB

DESIGNED BY  
SJM, CN

CHECKED BY  
SMF

DATE

COLEMAN & RINGWOOD AVENUES  
TRANSPORTATION STUDY

RINGWOOD AVENUE SHEET 2  
10% CONCEPT ALTERNATIVES

SCALE 1"=40'

DATE 2/9/24

JOB NO.  
SMX900-2  
DRAWING NUMBER

2 OF 10



Feb 09, 2024 - 3:51pm

C:\Users\nbrunetto\appdata\local\temp\AcPublish\_17892\SMX900-2-COMPILED.dwg

FOR REDUCED PLANS, THE  
ORIGINAL SCALE IS IN INCHES



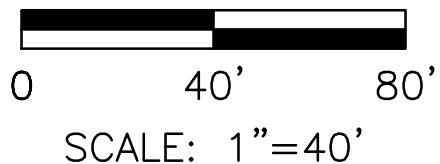
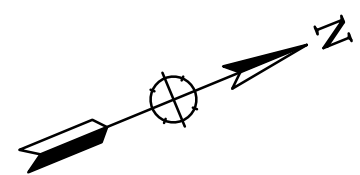
LEGEND:

- ASPHALT ROADWAY
- ASPHALT PATHWAY
- CONCRETE PATHWAY
- EXISTING VEGETATION
- PROPOSED VEGETATION
- EXISTING CURB
- EXISTING EDGE OF TRAVEL WAY
- PROPOSED CURB
- PROPOSED EDGE OF TRAVEL WAY
- PROPOSED RAISED ELEMENT OR BARRIER
- R/W AND PROPERTY LINES
- APPROXIMATE CITY / COUNTY BOUNDARY
- DETECTABLE WARNING SURFACE
- EXISTING TREE OR UTILITY
- TREE OR UTILITY IMPACT
- POTENTIAL TREE OR UTILITY IMPACT

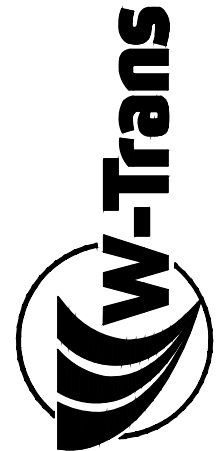


INSET MAP

PRELIMINARY  
NOT FOR CONSTRUCTION



Whitlock & Weinberger  
Transportation, Inc.  
490 Mendocino Avenue, Suite 201  
Santa Rosa, CA 95401  
(707) 542-9500 Fax (707) 542-9590



DRAWN BY  
NGB

DESIGNED BY  
SJM, CN

CHECKED BY  
SMF

DATE

COLEMAN & RINGWOOD AVENUES  
TRANSPORTATION STUDY

RINGWOOD AVENUE SHEET 3  
10% CONCEPT ALTERNATIVES

SCALE 1"=40'

DATE 2/9/24

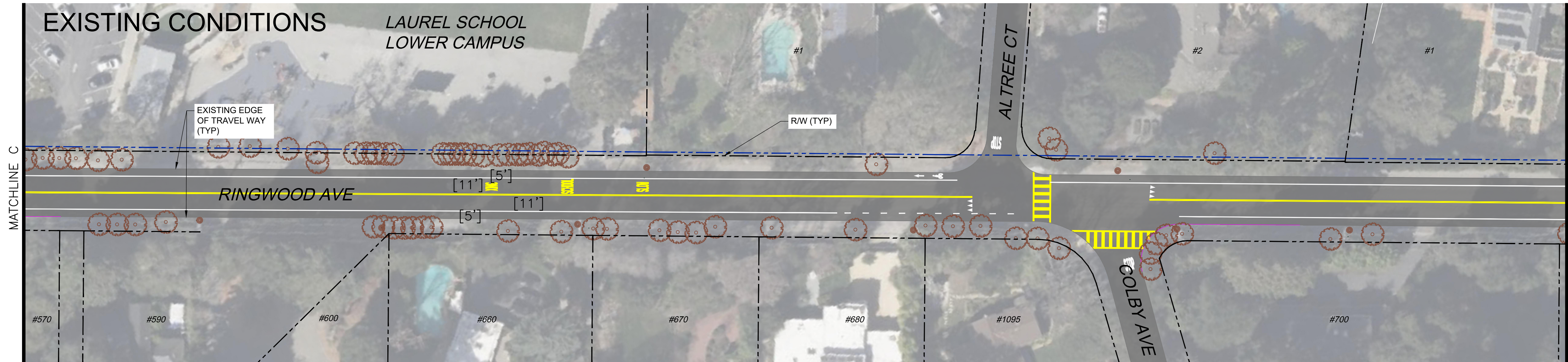
JOB NO. SMX900-2  
DRAWING NUMBER



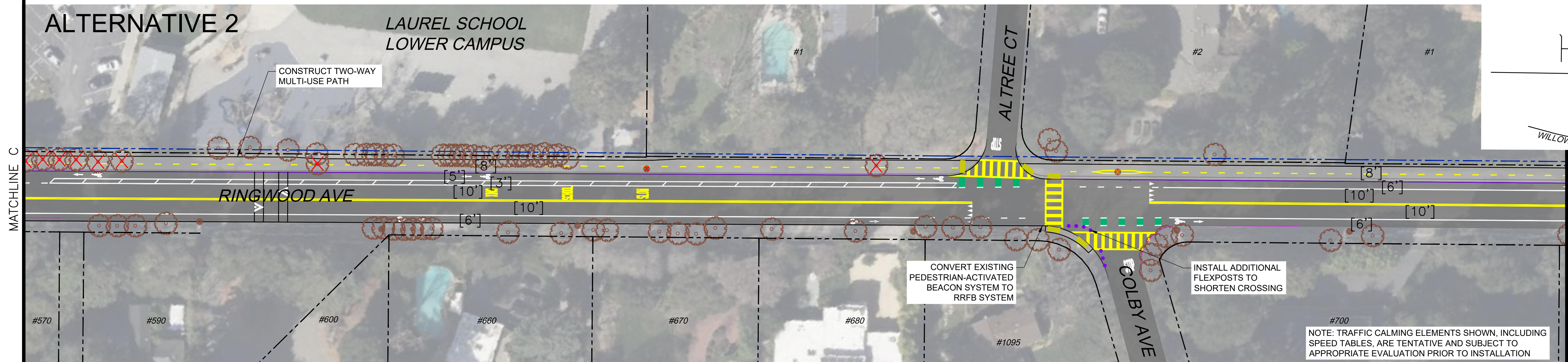
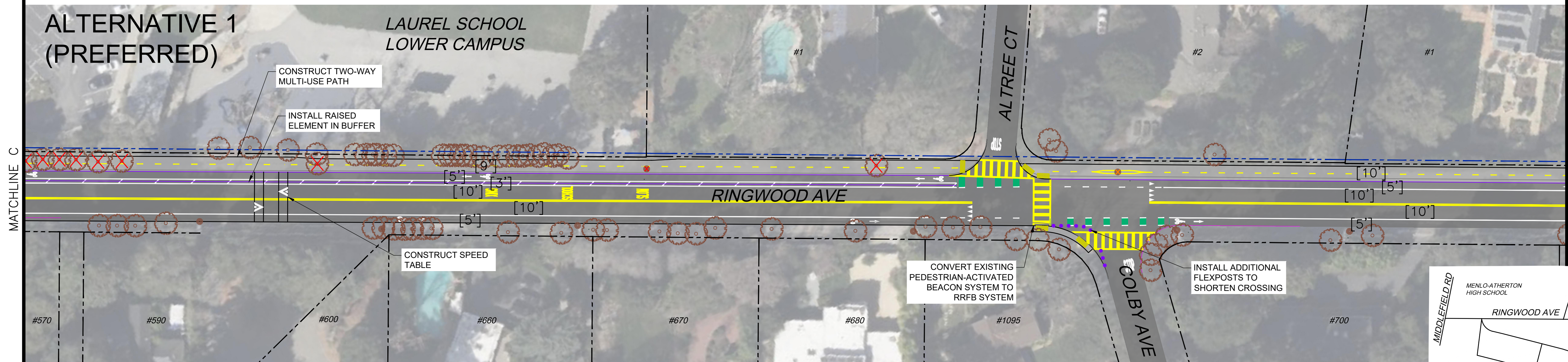
Feb 09, 2024 - 3:52pm

C:\Users\nbrunetto\appdata\local\temp\AcPublish\_17892\SMX900-2-COMPILED.dwg

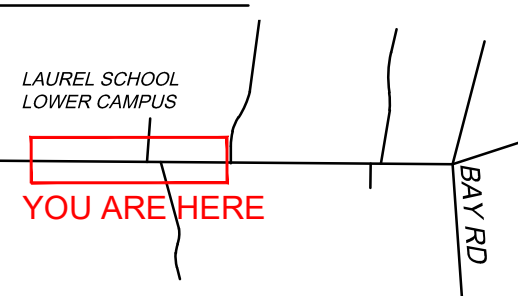
FOR REDUCED PLANS, THE  
ORIGINAL SCALE IS IN INCHES



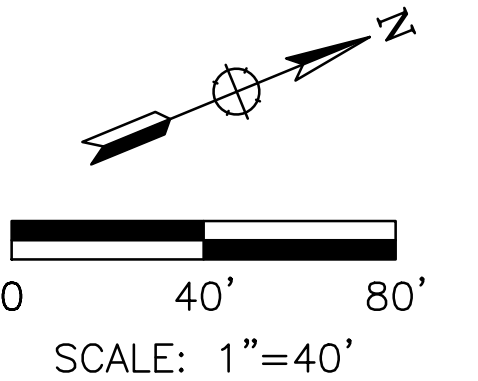
- #### LEGEND:
- ASPHALT ROADWAY
  - ASPHALT PATHWAY
  - CONCRETE PATHWAY
  - EXISTING VEGETATION
  - PROPOSED VEGETATION
  - EXISTING CURB
  - EXISTING EDGE OF TRAVEL WAY
  - PROPOSED CURB
  - PROPOSED EDGE OF TRAVEL WAY
  - PROPOSED RAISED ELEMENT OR BARRIER
  - R/W AND PROPERTY LINES
  - APPROXIMATE CITY / COUNTY BOUNDARY
  - DETECTABLE WARNING SURFACE
  - EXISTING TREE OR UTILITY
  - TREE OR UTILITY IMPACT
  - POTENTIAL TREE OR UTILITY IMPACT



#### INSET MAP



PRELIMINARY  
NOT FOR CONSTRUCTION



Whitlock & Weinberger  
Transportation, Inc.  
490 Mendocino Avenue, Suite 201  
Santa Rosa, CA 95401  
(707) 542-9500 Fax (707) 542-9590



DRAWN BY  
NGB

DESIGNED BY  
SJM, CN

CHECKED BY  
SMF

DATE

COLEMAN & RINGWOOD AVENUES

TRANSPORTATION STUDY

RINGWOOD AVENUE SHEET 4

10% CONCEPT ALTERNATIVES

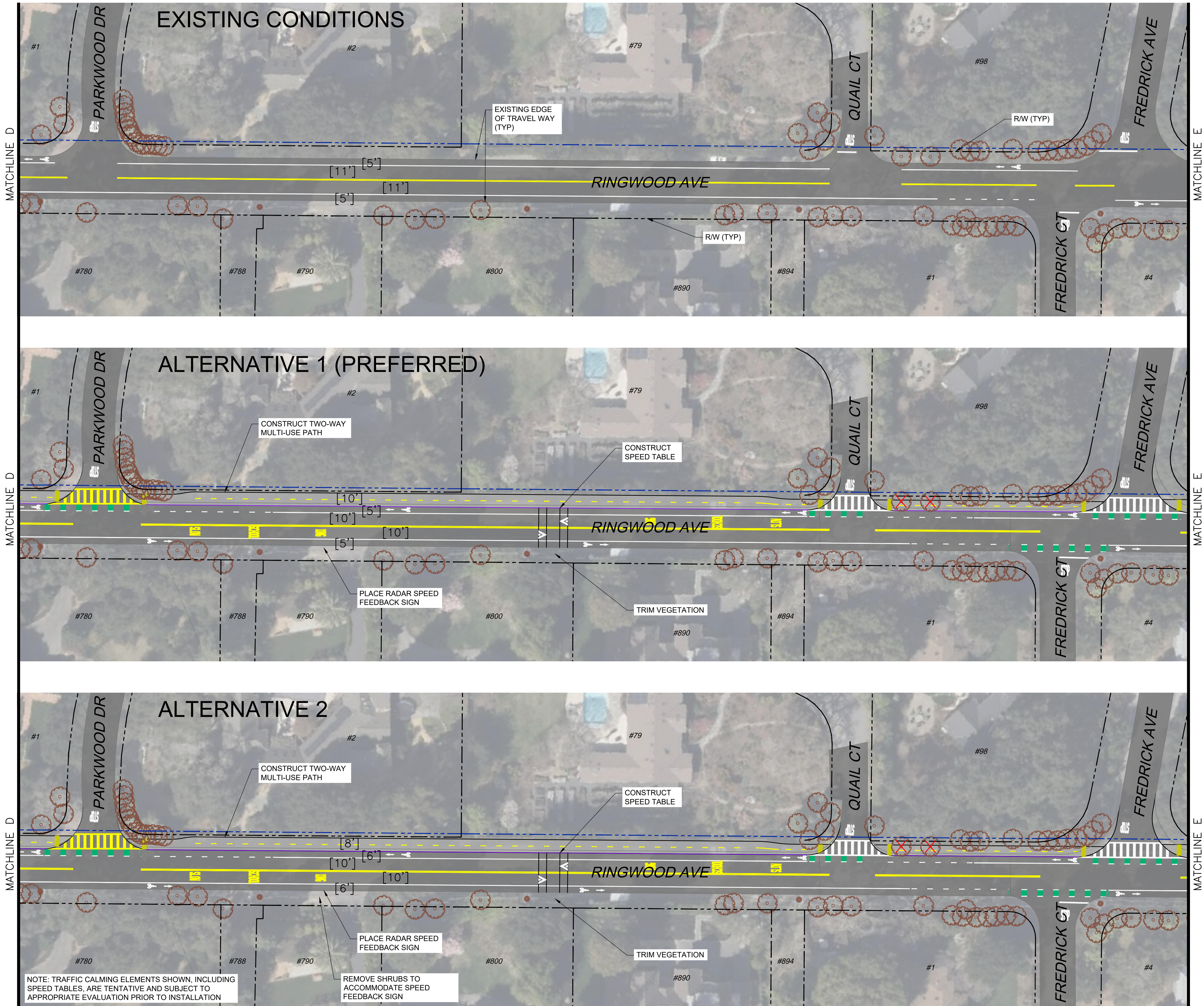
SCALE 1"=40'  
DATE 2/9/24  
JOB NO. SMX900-2  
DRAWING NUMBER



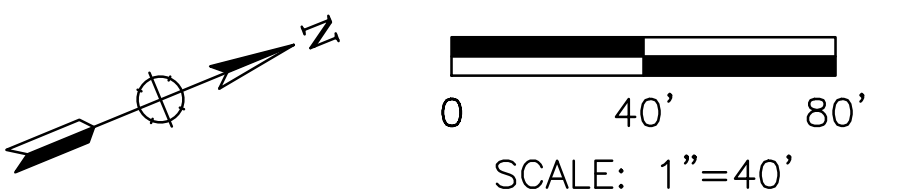
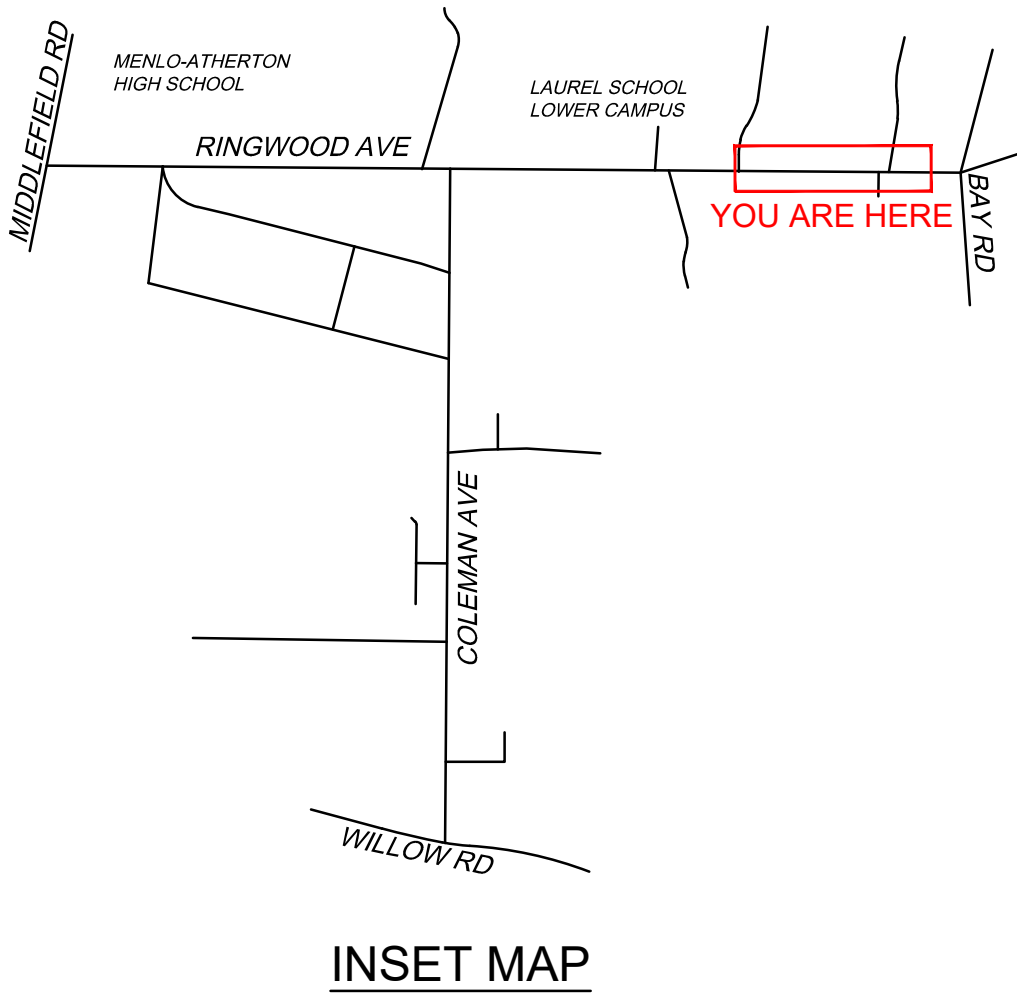
Feb 09, 2024 — 3:53pm

C:\Users\nbrunetto\appdata\local\temp\AcPublish\_17892\SMX900-2-COMPILED.dwg

FOR REDUCED PLANS, THE  
ORIGINAL SCALE IS IN INCHES



- LEGEND:**
- ASPHALT ROADWAY
  - ASPHALT PATHWAY
  - CONCRETE PATHWAY
  - EXISTING VEGETATION
  - PROPOSED VEGETATION
  - EXISTING CURB
  - EXISTING EDGE OF TRAVEL WAY
  - PROPOSED CURB
  - PROPOSED EDGE OF TRAVEL WAY
  - PROPOSED RAISED ELEMENT OR BARRIER
  - R/W AND PROPERTY LINES
  - APPROXIMATE CITY / COUNTY BOUNDARY
  - DETECTABLE WARNING SURFACE
  - EXISTING TREE OR UTILITY
  - TREE OR UTILITY IMPACT
  - POTENTIAL TREE OR UTILITY IMPACT



**PRELIMINARY  
NOT FOR CONSTRUCTION**

**Whitlock & Weinberger  
Transportation, Inc.**  
490 Mendocino Avenue, Suite 201  
Santa Rosa, CA 95401  
(707) 542-9500 Fax (707) 542-9590



DRAWN BY  
NGB

DESIGNED BY  
SJM, CN

CHECKED BY  
SMF

DATE

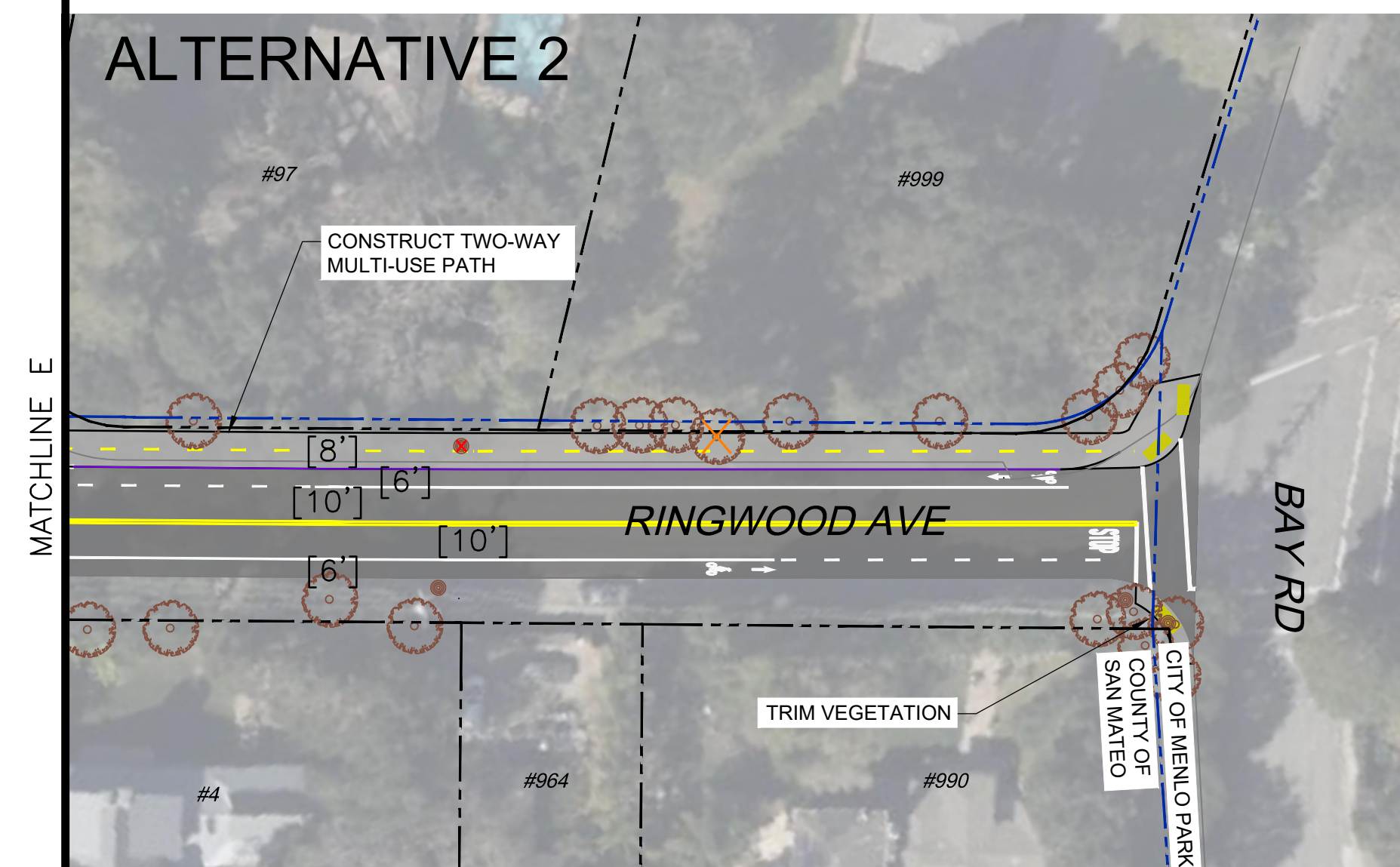
COLEMAN & RINGWOOD AVENUES  
TRANSPORTATION STUDY

RINGWOOD AVENUE SHEET 5

10% CONCEPT ALTERNATIVES

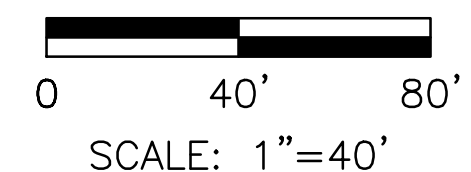
SCALE 1"=40'  
DATE 2/9/24  
JOB NO. SMX900-2  
DRAWING NUMBER





- 
- A hand-drawn map of the area around Menlo-Atherton High School. The map shows Ringwood Ave running horizontally, with Middlefield Rd to the west and Bay Rd to the east. Laurel School Lower Campus is located north of Ringwood Ave, between Middlefield Rd and Bay Rd. Menlo-Atherton High School is located north of Ringwood Ave, west of Laurel School. Coleman Ave runs vertically south from Ringwood Ave, with Willow Rd at the bottom. A red square on Bay Rd is labeled 'YOU ARE HERE' in red text.

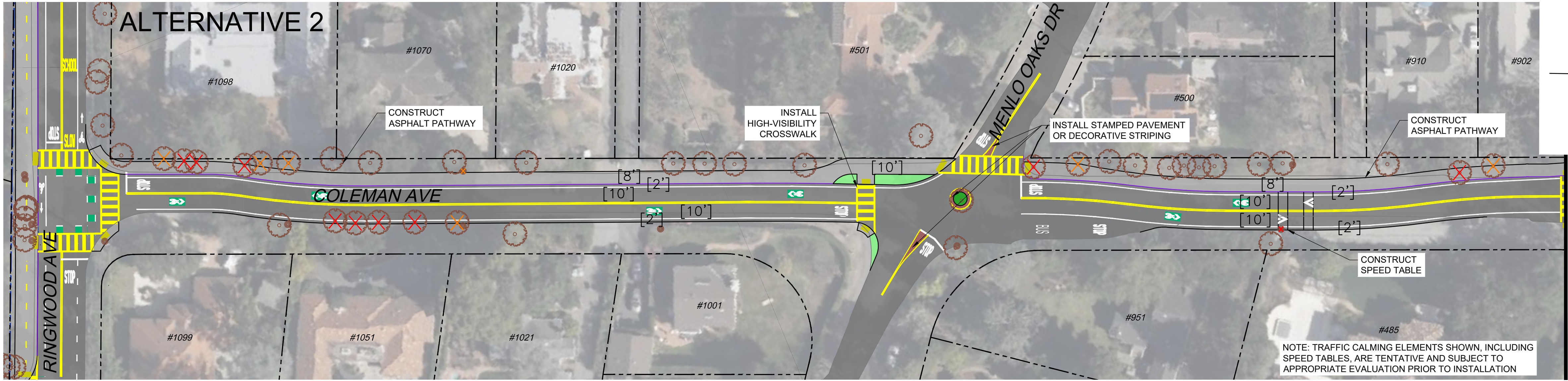
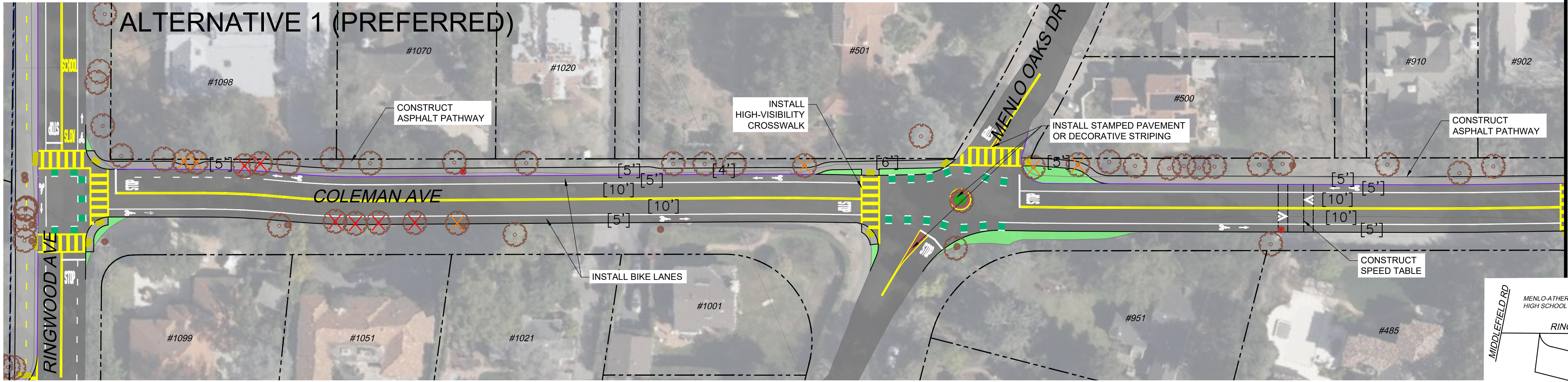
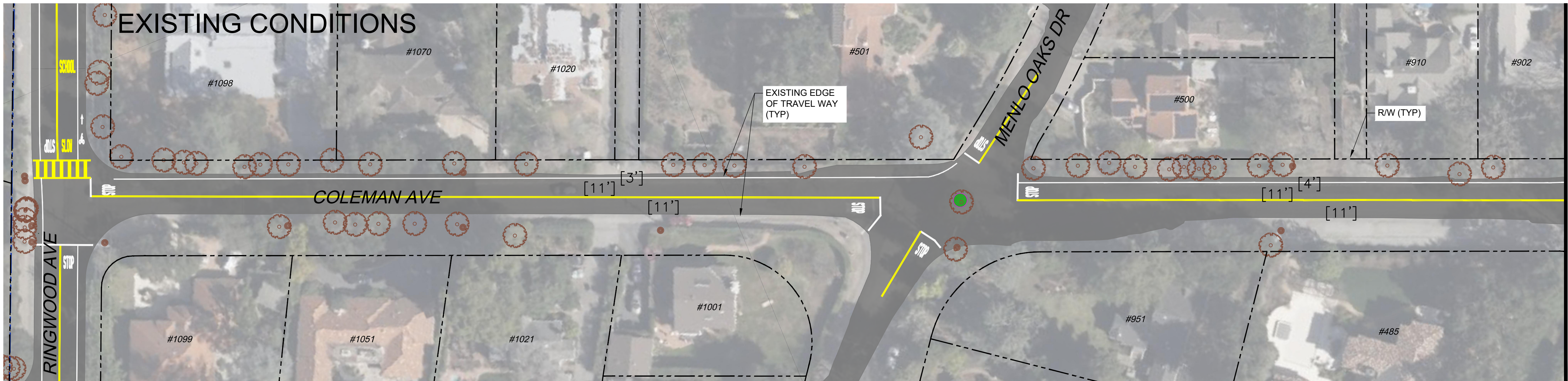
NOTE: TRAFFIC CALMING ELEMENTS SHOWN, INCLUDING  
SPEED TABLES, ARE TENTATIVE AND SUBJECT TO  
APPROPRIATE EVALUATION PRIOR TO INSTALLATION





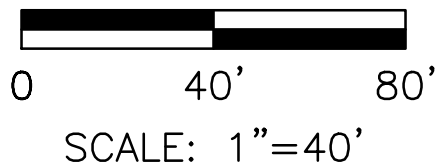
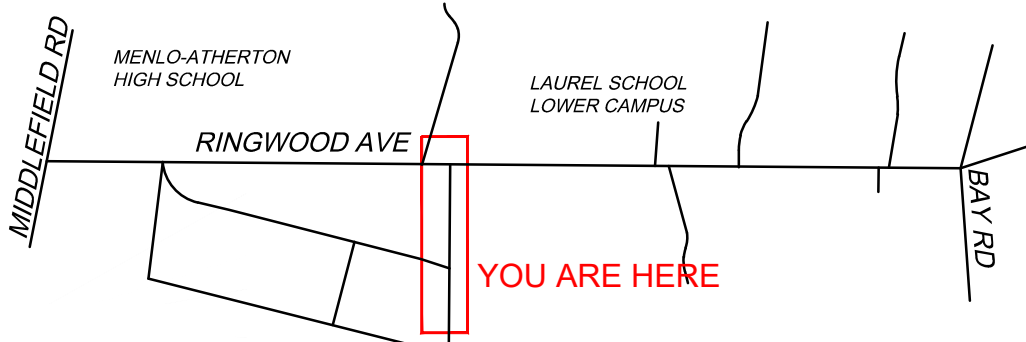
Feb 09, 2024 - 3:54pm

C:\Users\nbrunetto\appdata\local\temp\AcPublish\_17892\SMX900-2-COMPILED.dwg



- LEGEND:**
- ASPHALT ROADWAY
  - ASPHALT PATHWAY
  - CONCRETE PATHWAY
  - EXISTING VEGETATION
  - PROPOSED VEGETATION
  - EXISTING CURB
  - EXISTING EDGE OF TRAVEL WAY
  - PROPOSED CURB
  - PROPOSED EDGE OF TRAVEL WAY
  - PROPOSED RAISED ELEMENT OR BARRIER
  - R/W AND PROPERTY LINES
  - APPROXIMATE CITY / COUNTY BOUNDARY
  - DETECTABLE WARNING SURFACE
  - EXISTING TREE OR UTILITY
  - TREE OR UTILITY IMPACT
  - POTENTIAL TREE OR UTILITY IMPACT

**PRELIMINARY  
NOT FOR CONSTRUCTION**



NOTE: TRAFFIC CALMING ELEMENTS SHOWN, INCLUDING SPEED TABLES, ARE TENTATIVE AND SUBJECT TO APPROPRIATE EVALUATION PRIOR TO INSTALLATION

**Whitlock & Weinberger  
Transportation, Inc.**  
490 Mendocino Avenue, Suite 201  
Santa Rosa, CA 95401  
(707) 542-9500 Fax (707) 542-9590



DRAWN BY  
NGB

DESIGNED BY  
SJM, CN

CHECKED BY  
SMF

DATE

**COLEMAN & RINGWOOD AVENUES  
TRANSPORTATION STUDY**

**COLEMAN AVENUE SHEET 1  
10% CONCEPT ALTERNATIVES**

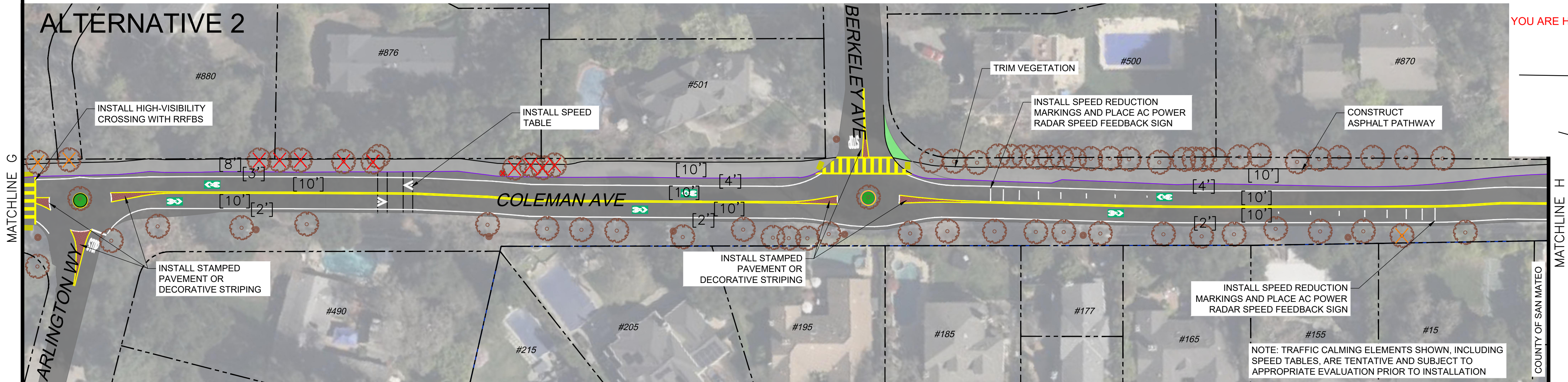
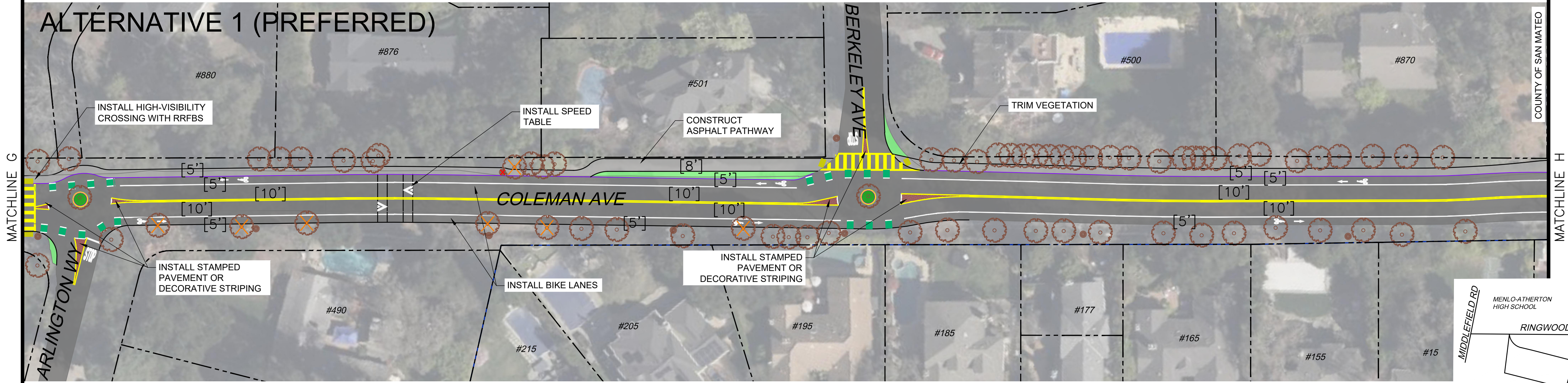
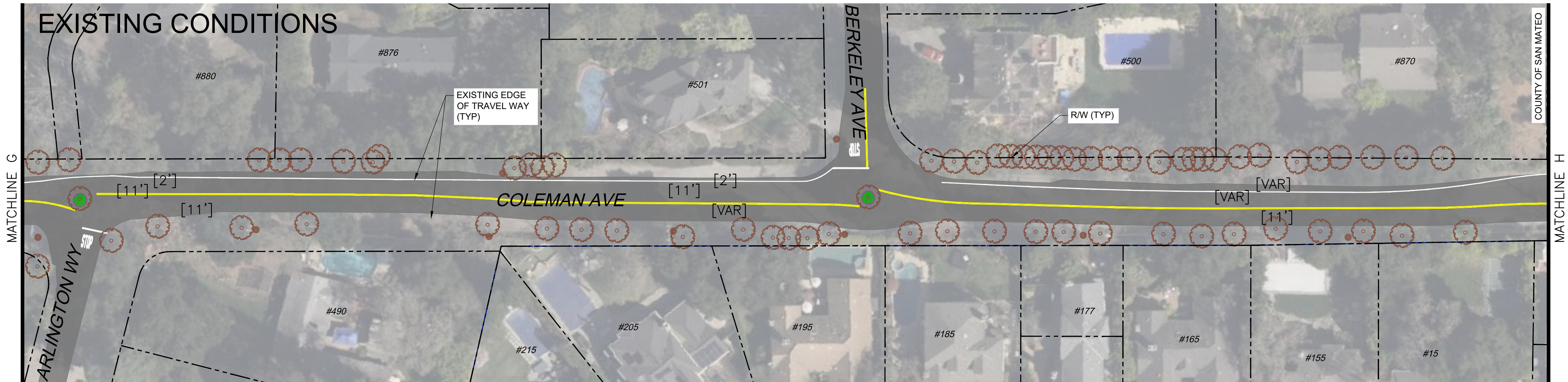
SCALE 1"=40'  
DATE 2/9/24  
JOB NO. SMX900-2  
DRAWING NUMBER

7 OF 10

FOR REDUCED PLANS, THE  
ORIGINAL SCALE IS IN INCHES



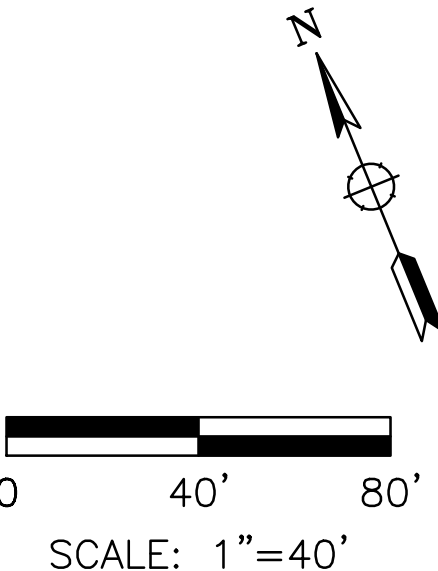




- LEGEND:
- ASPHALT ROADWAY
  - ASPHALT PATHWAY
  - CONCRETE PATHWAY
  - EXISTING VEGETATION
  - PROPOSED VEGETATION
  - EXISTING CURB
  - EXISTING EDGE OF TRAVEL WAY
  - PROPOSED CURB
  - PROPOSED EDGE OF TRAVEL WAY
  - PROPOSED RAISED ELEMENT OR BARRIER
  - R/W AND PROPERTY LINES
  - APPROXIMATE CITY / COUNTY BOUNDARY
  - DETECTABLE WARNING SURFACE
  - EXISTING TREE OR UTILITY
  - TREE OR UTILITY IMPACT
  - POTENTIAL TREE OR UTILITY IMPACT

PRELIMINARY  
NOT FOR CONSTRUCTION

INSET MAP



Whitlock & Weinberger  
Transportation, Inc.  
490 Mendocino Avenue, Suite 201  
Santa Rosa, CA 95401  
(707) 542-9500 Fax (707) 542-9590

**w-Trans**

DESIGNED BY  
SJM, CN

CHECKED BY  
SMF

DATE

COLEMAN & RINGWOOD AVENUES  
TRANSPORTATION STUDY

COLEMAN AVENUE SHEET 2  
10% CONCEPT ALTERNATIVES

SCALE 1"=40'

DATE 2/9/24

JOB NO. SMX900-2

DRAWING NUMBER

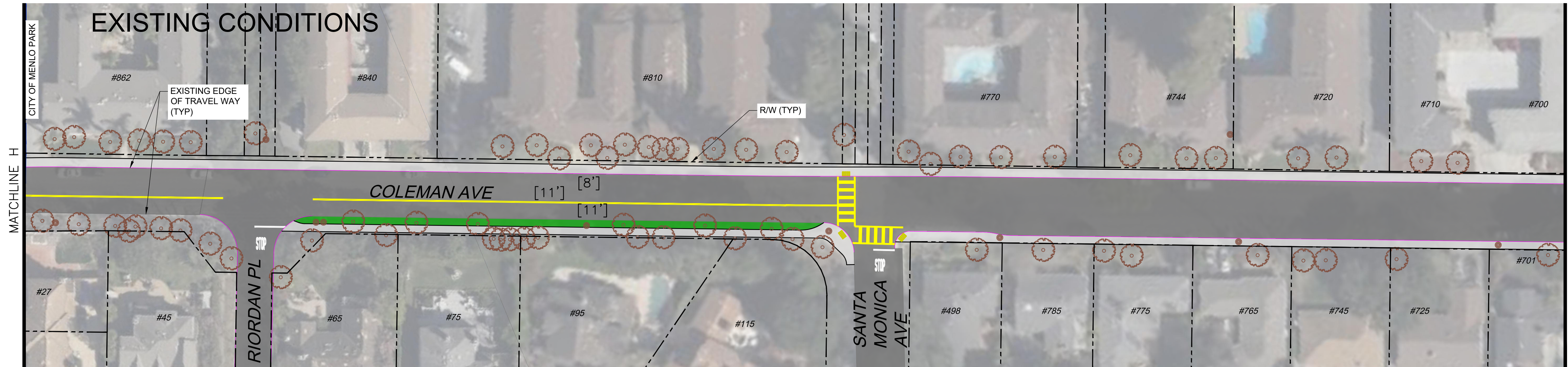
8 OF 10



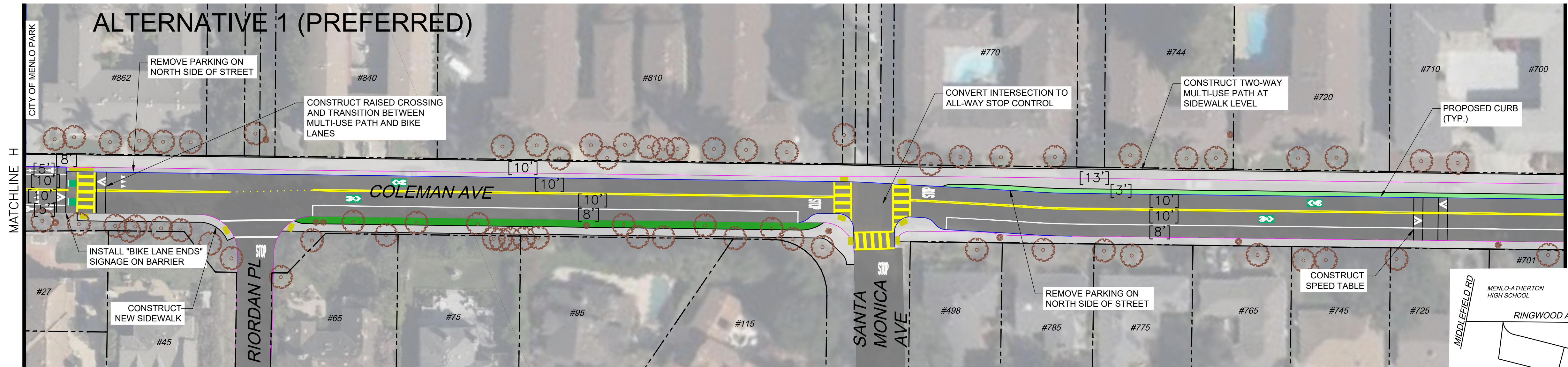
Feb 09, 2024 - 3:56pm

C:\Users\nbrunetto\appdata\local\temp\AcPublish\_17892\SMX900-2-COMPILED.dwg

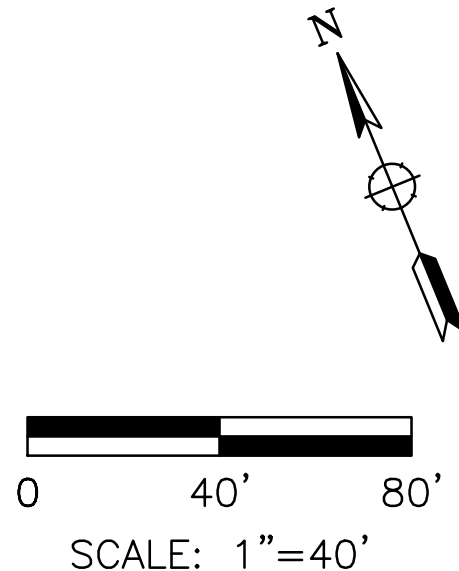
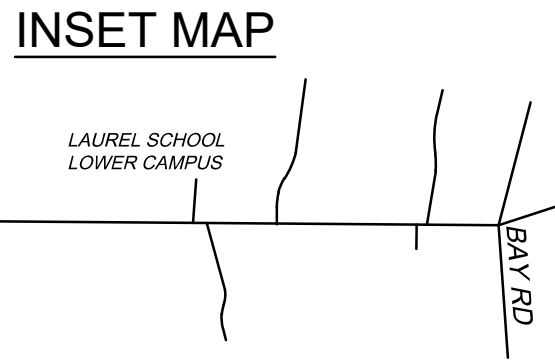
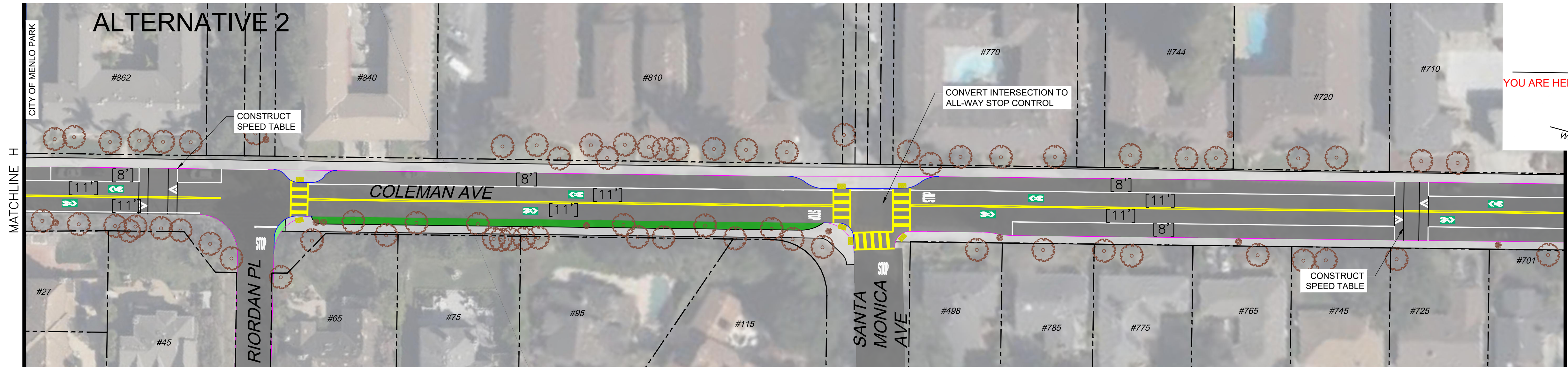
FOR REDUCED PLANS, THE  
ORIGINAL SCALE IS IN INCHES



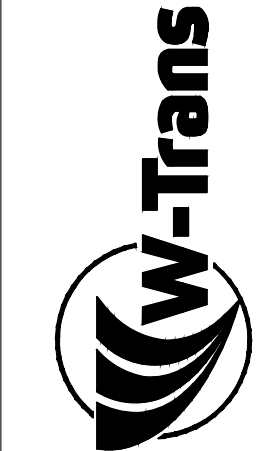
- LEGEND:**
- ASPHALT ROADWAY
  - ASPHALT PATHWAY
  - CONCRETE PATHWAY
  - EXISTING VEGETATION
  - PROPOSED VEGETATION
  - EXISTING CURB
  - EXISTING EDGE OF TRAVEL WAY
  - PROPOSED CURB
  - PROPOSED EDGE OF TRAVEL WAY
  - PROPOSED RAISED ELEMENT OR BARRIER
  - R/W AND PROPERTY LINES
  - APPROXIMATE CITY / COUNTY BOUNDARY
  - DETECTABLE WARNING SURFACE
  - EXISTING TREE OR UTILITY
  - TREE OR UTILITY IMPACT
  - POTENTIAL TREE OR UTILITY IMPACT



PRELIMINARY  
NOT FOR CONSTRUCTION



**Whitlock & Weinberger  
Transportation, Inc.**  
490 Mendocino Avenue, Suite 201  
Santa Rosa, CA 95401  
(707) 542-9500 Fax (707) 542-9590



DRAWN BY  
NGB

DESIGNED BY  
SJM, CN

CHECKED BY  
SMF

DATE

COLEMAN & RINGWOOD AVENUES  
TRANSPORTATION STUDY

COLEMAN AVENUE SHEET 3  
10% CONCEPT ALTERNATIVES

SCALE 1"=40'

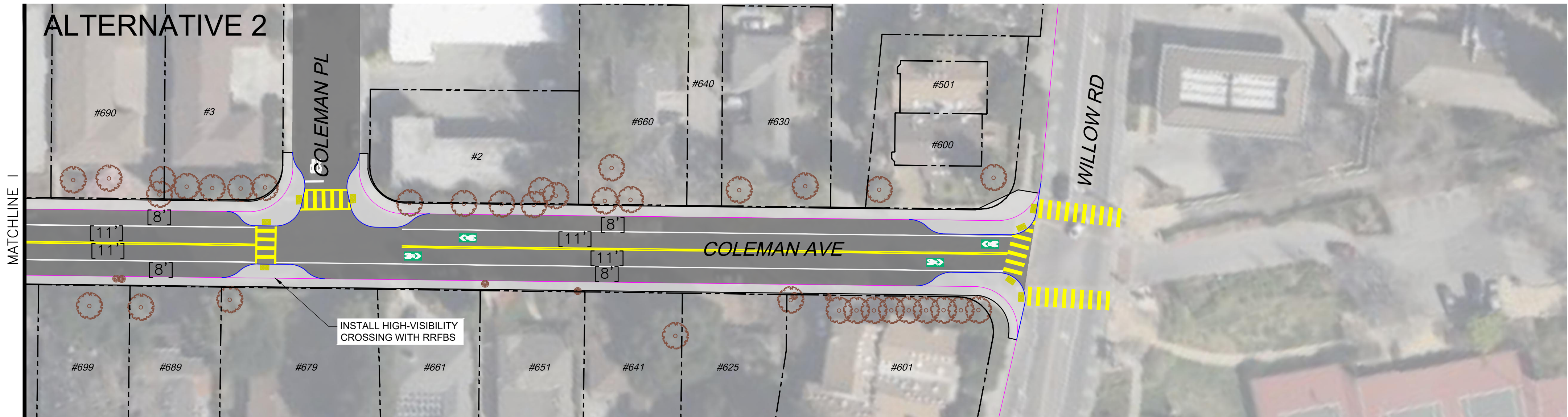
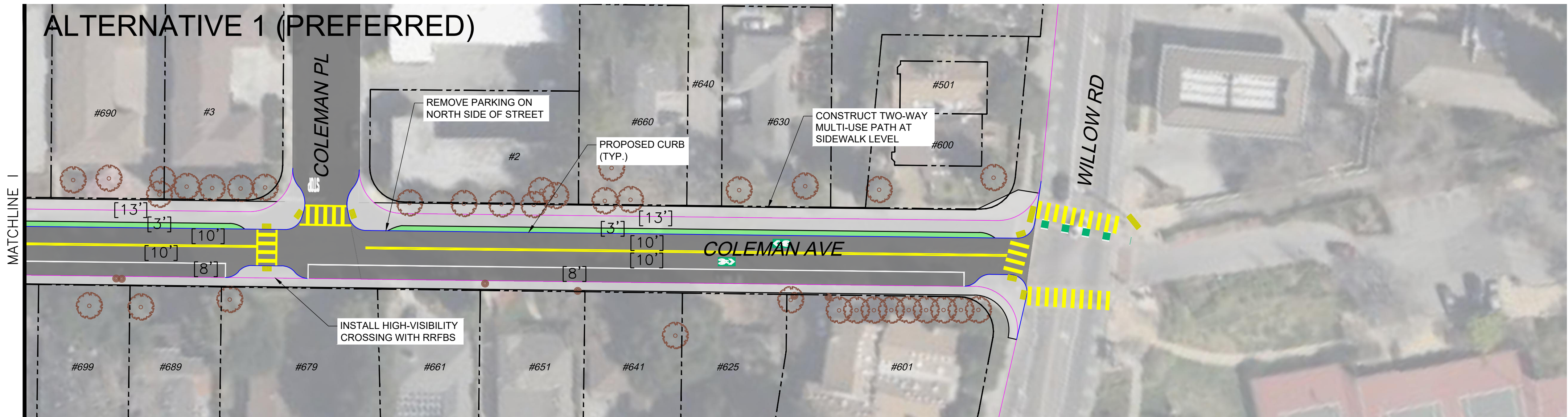
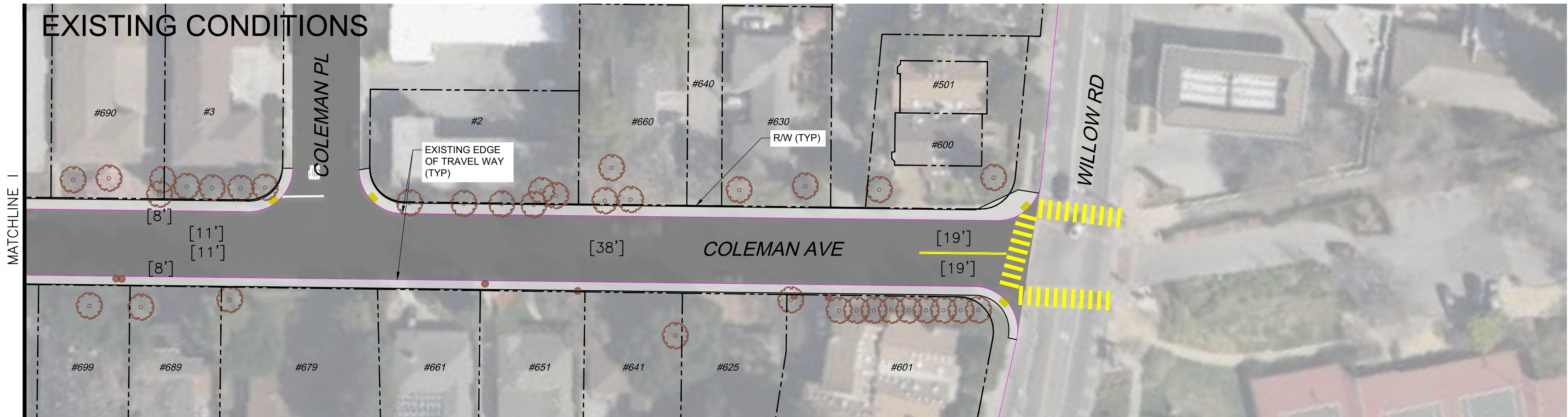
DATE 2/9/24

JOB NO. SMX900-2

DRAWING NUMBER

9 OF 10





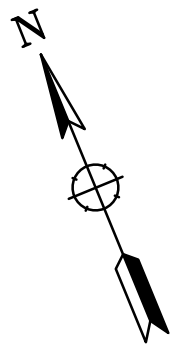
#### LEGEND:

- ASPHALT ROADWAY
- ASPHALT PATHWAY
- CONCRETE PATHWAY
- EXISTING VEGETATION
- PROPOSED VEGETATION
- EXISTING CURB
- EXISTING EDGE OF TRAVEL WAY
- PROPOSED CURB
- PROPOSED EDGE OF TRAVEL WAY
- PROPOSED RAISED ELEMENT OR BARRIER
- R/W AND PROPERTY LINES
- APPROXIMATE CITY / COUNTY BOUNDARY
- DETECTABLE WARNING SURFACE
- EXISTING TREE OR UTILITY
- TREE OR UTILITY IMPACT
- POTENTIAL TREE OR UTILITY IMPACT



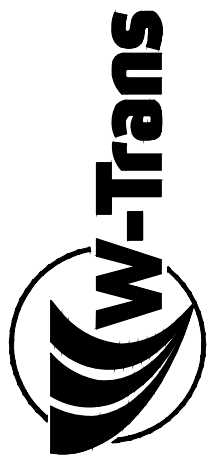
INSET MAP

PRELIMINARY  
NOT FOR CONSTRUCTION



0 40' 80'  
SCALE: 1"=40'

Whitlock & Weinberger  
Transportation, Inc.  
490 Mendocino Avenue, Suite 201  
Santa Rosa, CA 95401  
(707) 542-9500 Fax (707) 542-9590



DRAWN BY  
NGB

DESIGNED BY  
SJM, CN

CHECKED BY  
SMF

DATE

COLEMAN & RINGWOOD AVENUES  
TRANSPORTATION STUDY

COLEMAN AVENUE SHEET 4  
10% CONCEPT ALTERNATIVES

SCALE 1"=40'

DATE 2/9/24

JOB NO.  
SMX900-2  
DRAWING NUMBER

10 OF 10