

# Gray Whale Cove

## Pedestrian Access Improvement Project

June 21, 2018

### Outline

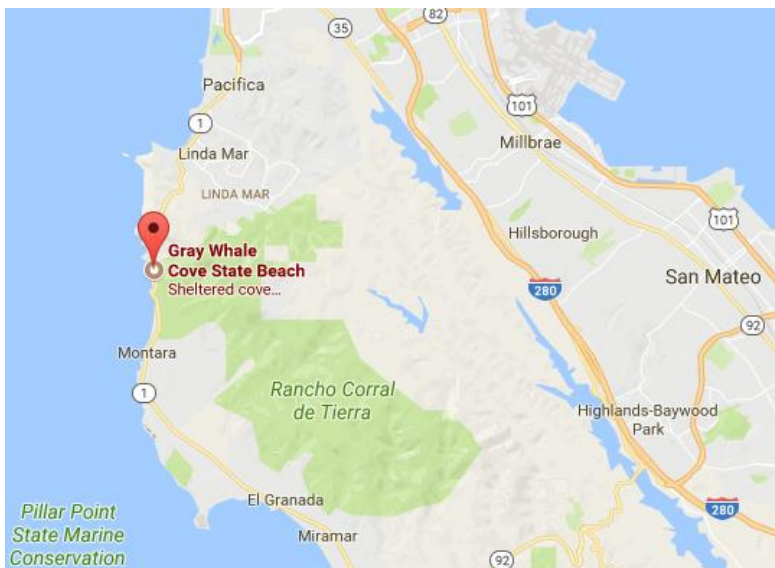
1. Purpose of Presentation
2. Existing Conditions
3. Proposed Improvements
4. Stakeholder Engagement
5. Funding
6. Conclusion



## Purpose of Presentation

- ▶ Request that the BPAC provide a letter in support of the San Mateo County grant applications for **Gray Whale Cove Pedestrian Access Improvement Project** construction funding:
  1. Active Transportation Program (ATP) Cycle 4 due July 31, 2018
  2. Highway Safety Improvement Program (HSIP) Cycle 9 due August 31, 2018

## Existing Conditions - Vicinity Map



## Existing Conditions

- ▶ State Parks estimates there are over **62,000 visitors annually** to Gray Whale Cove State Beach
- ▶ No pedestrian crosswalk or lighting to aid people crossing Highway 1 to access the State Beach
- ▶ Existing conditions
  - ▶ Minimal site distance
  - ▶ Non-standard curves in highway

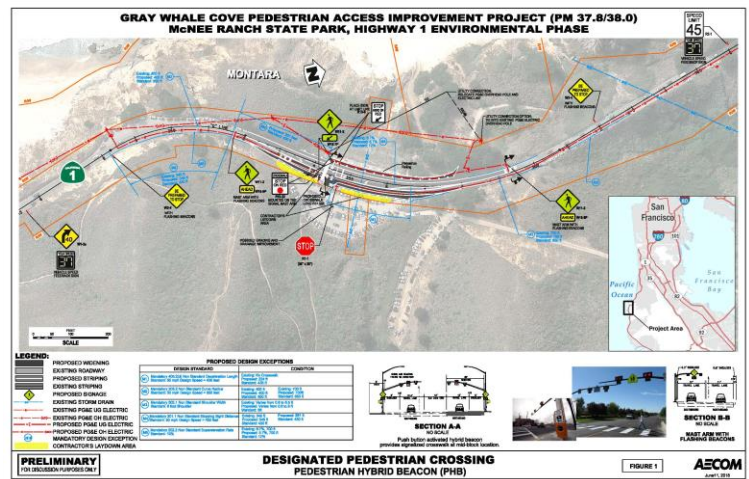


## Video of Existing Conditions

- ▶ [https://drive.google.com/file/d/1Ur4vErgG\\_6AqfL9vkt-ICLN2vwzAMi-Z/view?usp=sharing](https://drive.google.com/file/d/1Ur4vErgG_6AqfL9vkt-ICLN2vwzAMi-Z/view?usp=sharing)

## Proposed Improvements

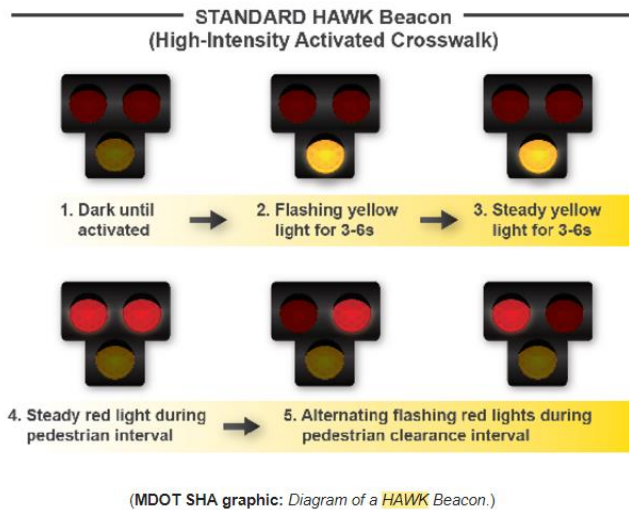
- ▶ ADA accessible crosswalk
- ▶ Pedestrian Hybrid Beacon (PHB), also known as HAWK system
- ▶ 3 sets of signage alerting drivers to slow down and watch for pedestrians on either side of the crosswalk
  - ▶ Speed feedback signs
  - ▶ 'Be prepared to stop'
  - ▶ Pedestrian signs
- ▶ Center left turn lane and acceleration lane pocket



## Video of Pedestrian Hybrid Beacon

- ▶ [https://www.youtube.com/watch?v=6\\_rym0bYINU](https://www.youtube.com/watch?v=6_rym0bYINU)

## Pedestrian Hybrid Beacon



## Stakeholder Engagement

- ▶ Project developed in coordination with the following stakeholders
  - ▶ Midcoast Community Council and community
  - ▶ Caltrans
  - ▶ San Mateo County Transportation Authority
  - ▶ State Parks
  - ▶ PG&E
- ▶ Project is identified in the following plans/studies:
  - ▶ Highway 1 Safety and Mobility Improvement Study
  - ▶ Preliminary Planning Study for Highway 1 Congestion & Safety Improvement Project
  - ▶ 'Connect the Coastside' Comprehensive Transportation Management Plan

## Funding for Construction

(\$2 million)	65% cost estimate for construction phase
\$650,000	Transportation Authority grant funds (leftover from design)
\$200,000	San Mateo County Measure K half cent sales tax funds
<hr/>	
(\$1.15 million)	Approximate amount needed for construction phase

## Conclusion

- ▶ Request that the BPAC provide a letter of support for the ATP and HSIP grant applications for the Gray Whale Cove Pedestrian Access Improvement Project.
- ▶ For additional questions regarding the project, please contact:  
Elizabeth Dallman, [edallman@smcgov.org](mailto:edallman@smcgov.org), 650-599-1016  
Legislative Aide, San Mateo County Supervisor Don Horsley