



Climate Ready San Mateo County (SMC) will help us better prepare the County in the face of a changing climate. This initiative will expand our community's understanding of climate-related risks from heat, wildfires, intensifying rainfall and severe storm events and develop community-driven strategies for climate change preparedness. By working together, planning ahead and being better informed we can more effectively prepare to protect our communities, natural resources, essential services and infrastructure, and most importantly our physical and mental well-being and health.

## Climate Ready SMC Collaborative

To foster collaboration and collectively find solutions to the climate change challenge, leaders from local government, non-profit and community-based organizations, businesses, and other key partners are invited to join in forming the Climate Ready San Mateo County (SMC) Collaborative. With your support, this Collaborative can become a venue to:

- Better understand current challenges and future risks to our residents, places and infrastructure from climate hazards such as rising temperatures and extreme heat, increasing wildfires, intensifying rainfall and storms.
- Learn about, develop and apply policies, projects and programs on the ground here in San Mateo County to help us better plan and prepare.
- Develop, pilot, and seek expanded funding for community-driven strategies and approaches in San Mateo County communities.
- Identify effective approaches to inform and engage our communities and welcome their leadership in responding to these risks and opportunities.
- Encourage dialogue, foster coordination and build political support and leadership to empower shared action on climate adaptation.



## Get Involved

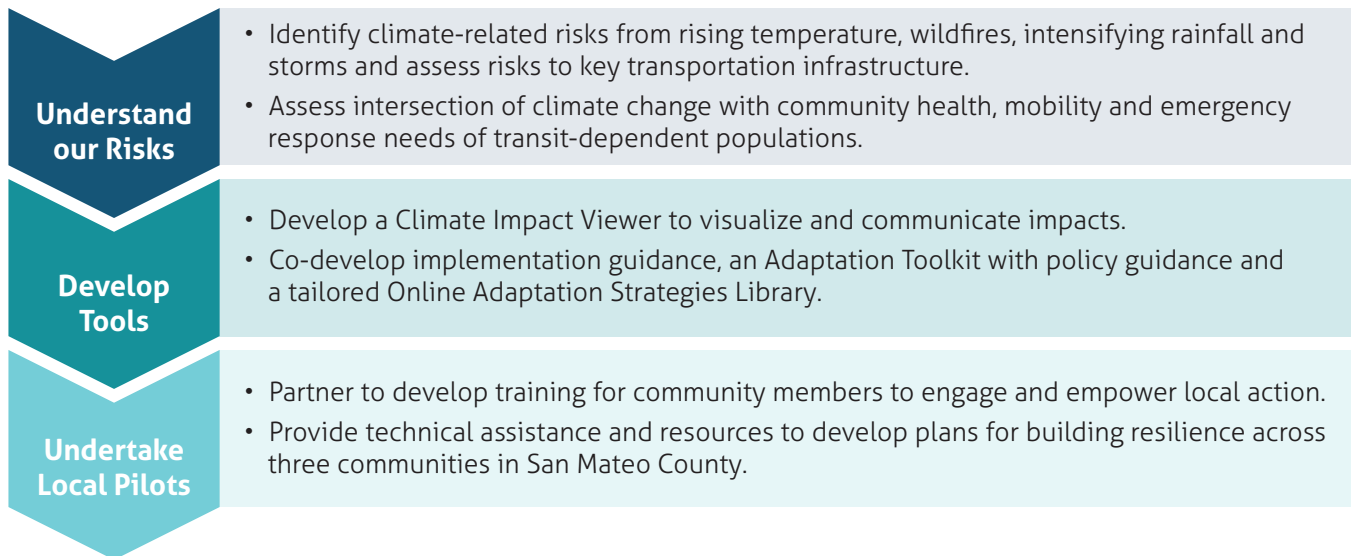
**Partner and lend your leadership and expertise to this Initiative.** This initiative requires input and participation from a wide range of community leaders, technical disciplines and subject matter experts. We invite your organization to participate as a leading member of the Climate Ready SMC Collaborative to develop the Collaborative vision, goals and agenda. Your participation will help assure the Collaborative is responsive and supportive of your community's needs and will strengthen our capacity to protect our people and manage our valuable resources responsibly.



## Upcoming Engagement Opportunity

The Collaborative can be a place for each of us to inform – and to seek support for key San Mateo County-based cross-sector projects. One such example is the “MAINSTREAMING CLIMATE RESILIENCE IN SAN MATEO COUNTY” Project funded by the California Department of Transportation Adaptation Planning (SB-1) Grant. This project runs through February 2020 and presents the opportunity for you to provide early guidance and lend your leadership and expertise in defining the direction for this body of work to make the research, findings and tools relevant to your current and future efforts.

### Key Project Outcomes | Timeline (January – February 2020)



## Get Involved

### Participate in ongoing engagement activities.

Visit <https://www.smcsustainability.org/climate-ready> and share your stories and experiences with a range of climate hazards. Drop a pin on the map and show us the areas of concern and access future event and project information.

### Partner with us.

Help organize a presentations or event in your neighborhood or community to raise awareness and seek input.

### Join our listserv.

Visit <https://www.smcsustainability.org/climate-ready> to join the mailing list to stay informed and engage.

### Want to know more?

Visit <https://www.smcsustainability.org/climate-ready> to learn more about Climate Ready SMC.

### Questions?

Please contact Jasneet Sharma, [jsharma@smc.gov](mailto:jsharma@smc.gov)

**CLIMATE  
READY**  
SAN MATEO COUNTY

