



# Annual SMC Bike and Ped Count

**Julia Malmo-Laycock**



**OFFICE OF  
SUSTAINABILITY**  
COUNTY OF SAN MATEO



# Overview

San Mateo County is participating in the [National Bicycle and Pedestrian Documentation Project](#) from September 10<sup>th</sup> – 15<sup>th</sup>, 2019.

This nationwide effort follows a standardized protocol. The resulting data can be used:

- By planners
- By decision-makers
- To guide investment decisions around sustainable transportation



# Overview

- Volunteers count at various locations throughout San Mateo County during specific time periods.
- Count sites the same as last year for the sake of consistency.
- Same count method is used for all intersections

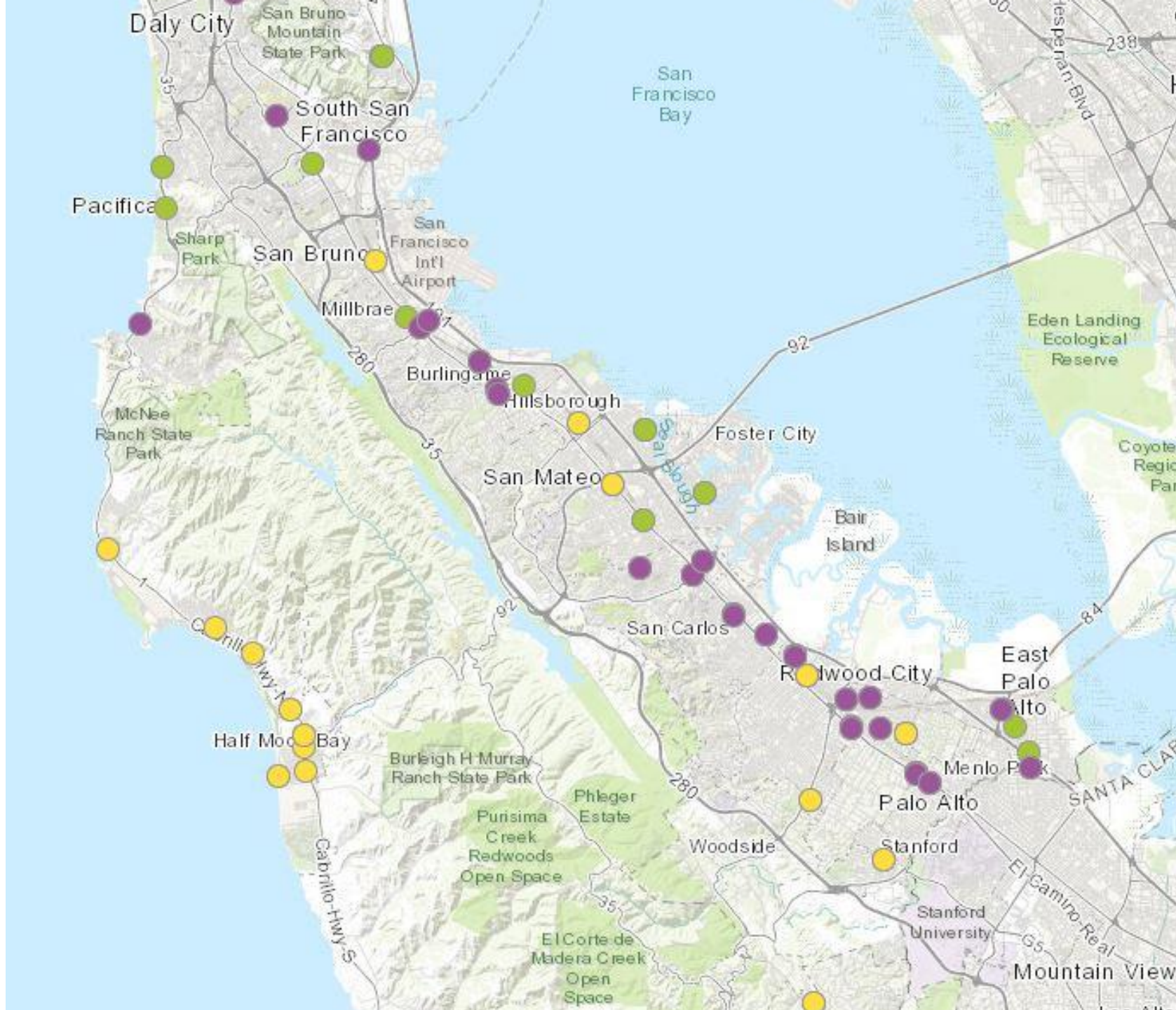


# Count Locations

Count locations  
in **purple** were counted  
in **2016 and 2017**.

Count locations  
in **yellow** were new  
locations in **2017**.

Counts in **green**  
are **2016 only**.



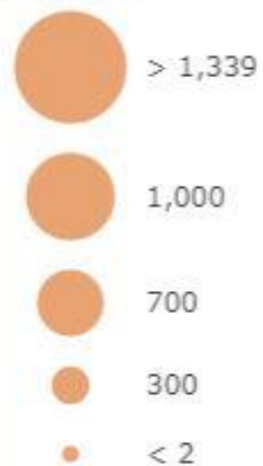


## Pedestrian Counts

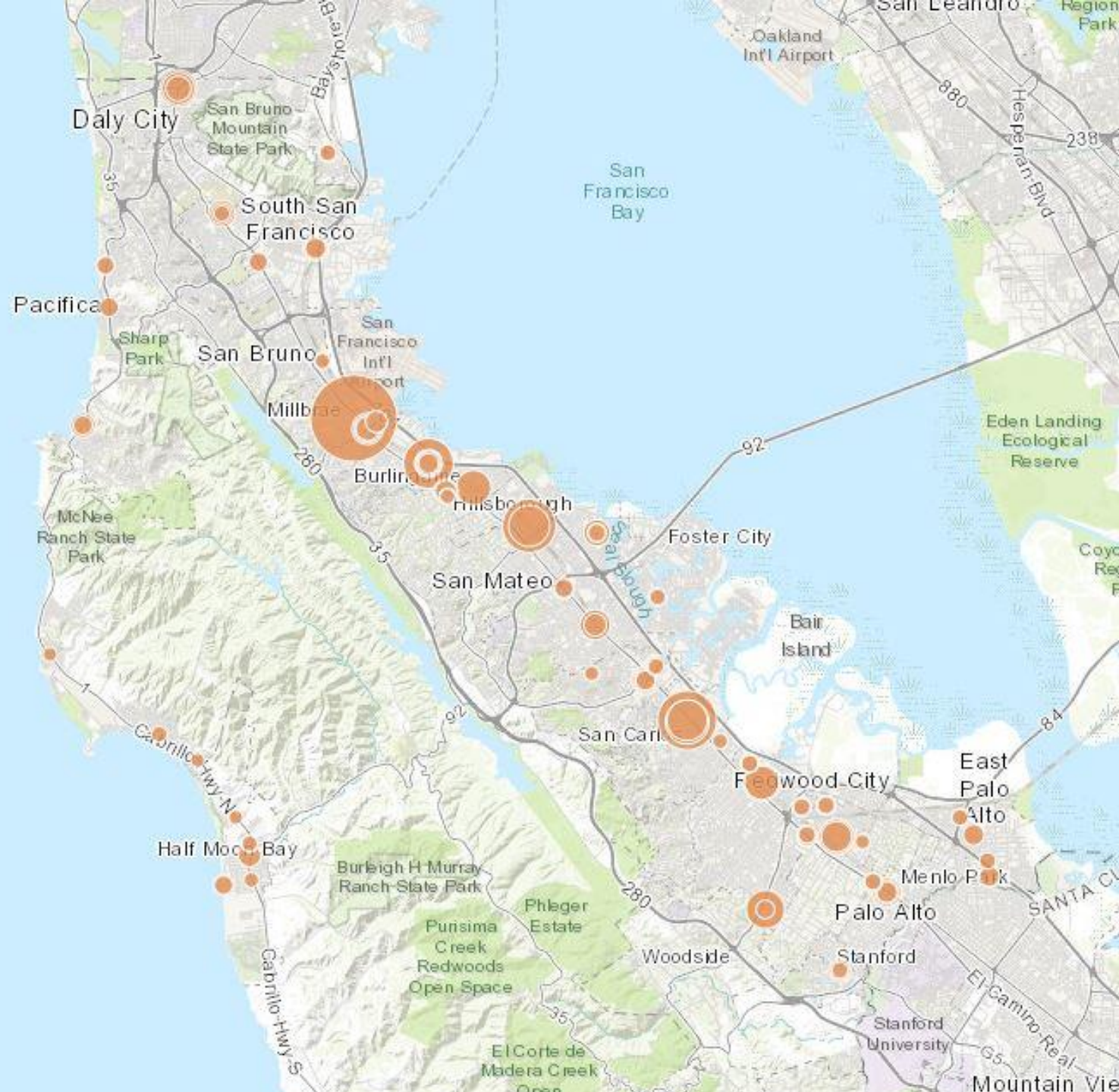
### Legend

Total Pedestrians per Count (2017 and 2016)

Pedestrian



Click on each count location for more information!





## Bicycle Counts

Legend

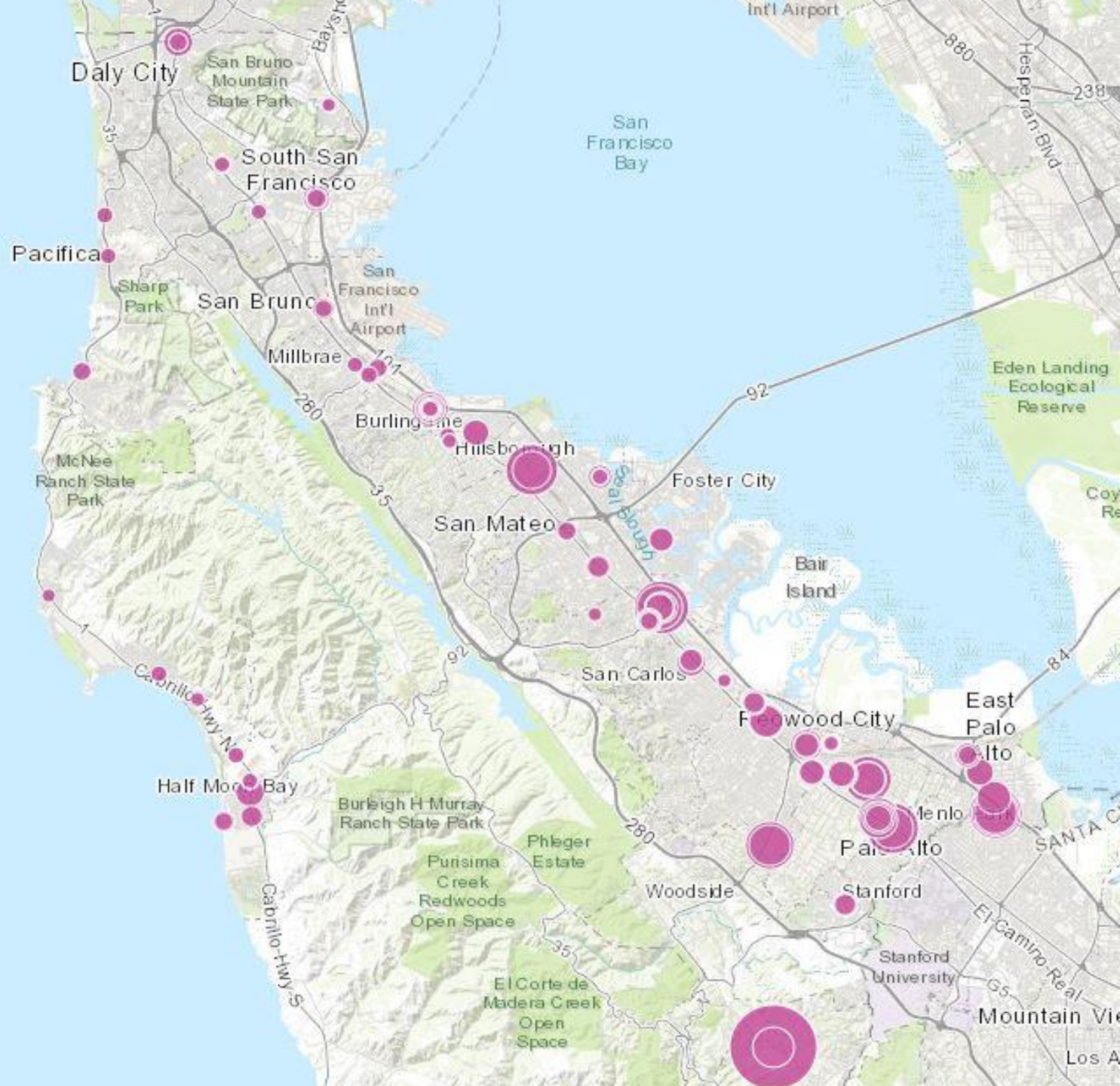
Total Bicycles per Count (2017 and 2016)

Bikes



Bikes
> 264
200
130
70
< 1

Click on each count location for more information!



# VOLUNTEERS NEEDED

FOR THE ANNUAL SAN MATEO COUNTY BIKE & PEDESTRIAN COUNT

September 10<sup>th</sup> – 15<sup>th</sup>, 2019

**Can YOU help?**



For more information visit [smcsustainability.org/livable-communities/active-transportation/](https://smcsustainability.org/livable-communities/active-transportation/)

Please direct all questions to [bikepedcountsmc@gmail.com](mailto:bikepedcountsmc@gmail.com)  
OR call (650) 363-4682.



OFFICE OF  
SUSTAINABILITY  
COUNTY OF SAN MATEO